

**TASMANIAN GAMING
COMMISSION**

2006-07 ANNUAL REPORT

CHAIRMAN’S REPORT	5
GAMING REGULATION IN TASMANIA.....	7
THE TASMANIAN GAMING COMMISSION	7
FUNCTIONS OF THE COMMISSION	7
SUPPORT TO THE COMMISSION.....	8
PARTICIPATION IN WORKING GROUPS AND OTHER FORUMS.....	8
LEGISLATIVE FRAMEWORK	9
<i>Gaming Control Act 1993</i>	9
<i>TT-Line Gaming Act 1993</i>	9
MAJOR ACTIVITIES AND GAMING DEVELOPMENTS IN 2006-07	10
TASMANIAN GAMING COMMISSION STRATEGIC PLAN	10
HARM MINIMISATION INITIATIVES	10
ASSESSMENT OF NEW GAMES AND JACKPOT SYSTEMS AND THE APPLICATION OF NATIONAL STANDARDS	10
BETTING EXCHANGES.....	11
COMMUNICATIONS	11
MINOR GAMING REVIEW.....	12
TASMANIAN GAMING EXCLUSIONS SCHEME REVIEW	12
ACCREDITED TESTING FACILITIES.....	13
GAMING IN TASMANIA.....	14
CASINO OPERATIONS	14
<i>Wrest Point Hotel Casino and Country Club Casino</i>	14
<i>Admirals Casino Pty Ltd</i>	14
GAMING IN HOTELS AND CLUBS	14
OPERATION OF KENO IN HOTELS AND CLUBS	15
LICENSING OF SPECIAL EMPLOYEES AND TECHNICIANS	15
<i>Responsible Conduct of Gaming Courses</i>	16
TASMANIAN GAMING LICENCE OPERATIONS	17
MINOR GAMING.....	17
MANUFACTURERS, SUPPLIERS AND TESTERS OF GAMING EQUIPMENT	18
COMMUNITY SUPPORT LEVY	19
<i>Social and Economic Impact Study</i>	20
<i>Disbursement of the CSL</i>	20
COMPLIANCE INSPECTIONS.....	22
BREACHES OF LEGISLATION	22
GAMING PREMISES	23
SPECIAL EMPLOYEES	24
<i>Technicians</i>	24
APPENDIX 1 – TASMANIAN GAMING COMMISSION OPERATING STATEMENT	25
APPENDIX 2 – COMMUNITY SUPPORT LEVY GRANT RECIPIENTS 2006–07	27
STATISTICS.....	39
PLAYER EXPENDITURE, TAXATION AND FEES 2002-03 TO 2006-07	40
TAX RATES RELATING TO GAMING ACTIVITIES IN TASMANIA	43
LICENSED PREMISES GAMING LICENCE APPLICATIONS 2005-06 TO 2006–07	44
SPECIAL EMPLOYEE AND TECHNICIAN LICENCES ISSUED 2006–07.....	44
[2] LICENSED PREMISES GAMING OPERATIVE INCLUDES HOTEL, CLUB AND BETTING EXCHANGE EMPLOYEES	44
COMPLAINTS RECEIVED AND INVESTIGATED BY THE COMMISSION 2006-07	45
SUMMARY OF CSL EXPENDITURE 2006-07	46
GLOSSARY	47

Chairman's Report

I have pleasure in presenting the Chairman's review of the Tasmanian Gaming Commission's (the Commission) activities for 2006-07.

The Commission's 2007 Operating Statement, released in April, provides a clear public declaration of the Commission's responsibilities and strategic priorities, including the need for increased research and policy development and constant enhancement of gaming harm minimisation and player protection.

The Operating Statement makes it clear that the Commission's role is as an independent vehicle through which the State of Tasmania operates to control and regulate gaming.

In line with the Commission's focus on improving harm minimisation and consumer protection measures, the Commission has taken serious disciplinary action against a number of Licensed Premises Gaming Licence holders for not enforcing the Commission's rules relating to the provision of EFTPOS transactions for gaming purposes.

The Commission has also made significant progress in developing an improved Responsible Conduct of Gambling (RCG) Program, an introductory course for newly licensed special employees. The Commission believes the course will assist venue employees to become more aware and better equipped to manage harm minimisation issues.

The Commission has provided assistance to the consultants conducting the Tasmanian Government sponsored social and economic impact study into gambling in Tasmania. The Commission will use the results from the study to develop further harm minimisation strategies.

Throughout 2006-07, the Commission continued to scrutinise applications for new gaming machine equipment, games jackpots and operating systems submitted by manufacturers for approval for use in Tasmania to ensure that new systems and games do not contain features that are likely to lead to an increase in problem gambling. All applications are now subject to a Player Impact Statement.

The Commission has also approved an upgrade to the existing monitoring system operating in hotels and clubs to enhance player security and to enable the implementation of Player Information Displays (to provide players with more information about the probability of winning a major prize).

During 2006-07, the Commission undertook two significant reviews of aspects of gaming activity. In April, 2007, the Commission considered a review of the regulation of minor gaming activities that made recommendations supporting a risk-based compliance focus to minor gaming regulations. The report also recommended a number of changes to authorised game rules and conditions reflecting the strategic risk based approach. These recommendations are being progressively implemented during 2007 and 2008.

The Tasmanian Gambling Exclusions Scheme (TGES) was established under the *Gaming Control Act 1993* to administer gambling activities in Tasmania with special emphasis on problem gamblers and those around them. The main focus is to provide a mechanism whereby problem gamblers can be excluded from venues either through self or third party exclusions.

During 2006-07, the protocols behind the TGES were reviewed and strengthened after widespread consultation. I can report the revised TGES continues to lead the nation in recognising that gambling does adversely affect some patrons or those around them and assists to change behaviour through abstinence via exclusion from gaming activities.

The Commission endorsed the Liquor and Gaming Branch's Gaming and Liquor Information System (GLIS). The GLIS is used for managing liquor and gaming licensing information, recording and tracking details of gaming equipment and approving games for electronic gaming machines. On the operational front, the Commission approved a systematic change to industry co-regulation as opposed to prescriptive control. This audit-based compliance regime is underpinned by a risk based strategy and requires licensed venues to take more internal control of their day to day gaming activities.

Improved venue surveillance and operating systems have enhanced offsite compliance and player protection without compromising the best practice standards already in place at Tasmanian licensed venues and betting networks. Betfair, Tasmania's only endorsed betting exchange, opened its Tasmanian headquarters at Technopark, Prince of Wales Bay, and continues to grow its business.

The Commission reviewed the findings of the 2006 Public Accounts Committee inquiry into the Community Support Levy (CSL) and subsequently recommended a revised model for the distribution of CSL funds to the Treasurer (Mr. Michael Aird). The Commission now undertakes a strategic oversight role and provides recommendations to the Treasurer in relation to the overall CSL budget and ensuring all funds are distributed in accordance with those budgets.

The Commission met on fourteen occasions during the year and, in keeping with its stated objectives, the Commission met with six stakeholders during the same period. This consultative process provides open informal discussion on a range of related matters.

The Commission continues to function efficiently and effectively with the dedicated support of my fellow Commissioners, Professor Kate Warner and Ms. Elizabeth Thomas, the Executive Director of Revenue, Gaming and Licensing, Wendy Sawford, and the Director of the Liquor and Gaming Branch, Leon Atkinson-MacEwen.

Peter Coe, Executive Director, and Bert Elson, Director, retired during the year. The Commission wishes to acknowledge the considerable contributions both made to the Tasmanian Gaming Industry. The Commission is ever conscious of the support of the Liquor and Gaming Branch who continue to provide professional, timely and impartial advice and administrative and technical support.

C.A. Eastaugh
Chairman

Gaming Regulation in Tasmania

The Tasmanian Gaming Commission

The Tasmanian Gaming Commission (the Commission) is an independent body responsible for the regulation of gaming in Tasmania, established under the *Gaming Control Act 1993* (the Act).

The Commission is a three-person body whose members are:

- Mr Clyde Eastaugh - Chairman
- Professor Kate Warner
- Ms Elizabeth Thomas

Mr Eastaugh has been a member of the Commission since its inception in September 1994 and was appointed as Chairman in November 2003. Professor Warner has been a member of the Commission since June 2001 and Ms Thomas was appointed as a member of the Commission in July 2004.

Generally, the Commission meets on a monthly basis. Special meetings are also held as required. In 2006-07, the Commission met formally on fourteen occasions.

Functions of the Commission

The functions of the Commission are prescribed under section 125 of the Act:

- To regulate and control gaming to ensure that it is conducted honestly and free from criminal influence and exploitation. This encompasses gaming in casinos (including the Spirit of Tasmania vessels), hotels and clubs, and extends to minor gaming activities and interactive gaming and wagering.
- To approve internal control, administrative and accounting procedures, rules and conditions in relation to gaming activities, and to determine disciplinary matters.
- To investigate and make recommendations to the Minister on gaming regulatory matters.
- To research and investigate matters relating to gaming, including the probity and financial stability of persons involved in the conduct of gaming operations. Those persons include applicants for special employee, technician, licensed premises gaming and Tasmanian gaming licences and applicants seeking listing on the Roll of Recognised Manufacturers and Suppliers of Gaming Equipment.
- To liaise with other authorities and persons responsible for the regulation and control of the conduct of gaming.
- To perform an oversight role in relation to the Community Support Levy (CSL) and make recommendations to the Treasurer on the allocation of funds from the CSL to appropriate projects and services.
- To investigate and resolve complaints relating to the conduct of gaming.

- To perform such other functions as required by the *Gaming Control Act 1993* and *TT-Line Gaming Act 1993*.

Support to the Commission

The Commission is supported by staff of the Liquor and Gaming Branch in undertaking its day-to-day activities. The Branch is located within the Revenue, Gaming and Licensing Division of the Department of Treasury and Finance.

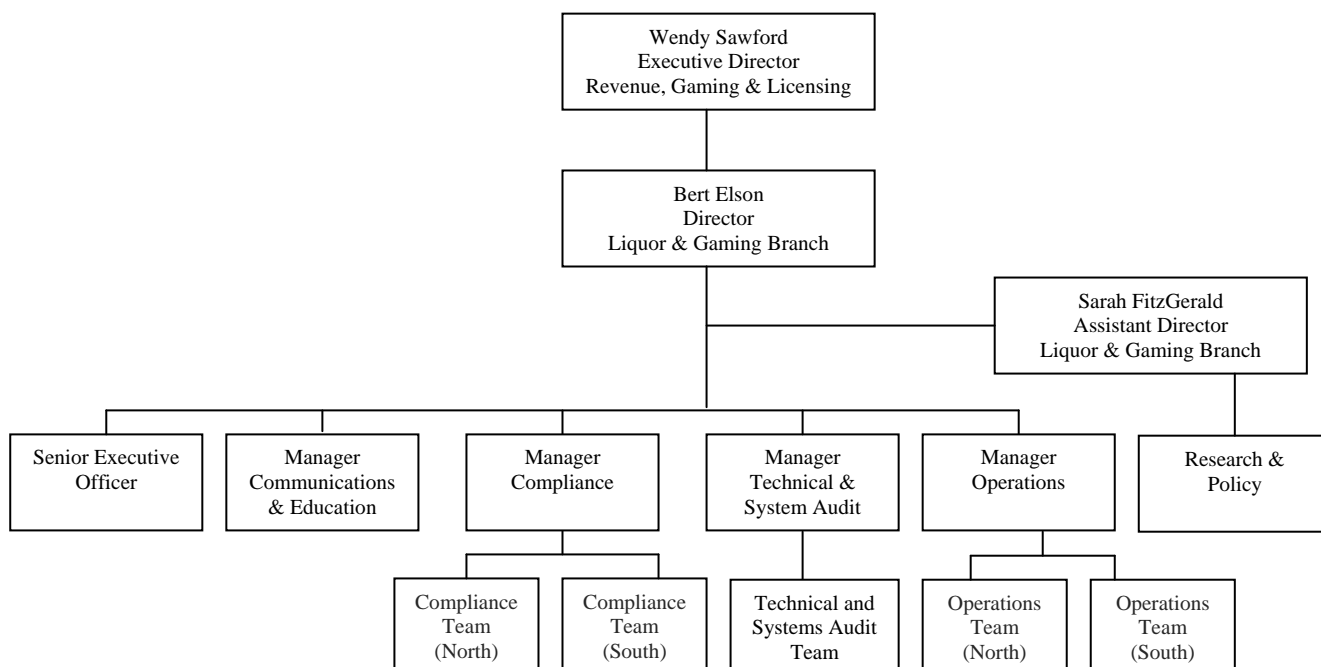
The Liquor and Gaming Branch has offices in Hobart and Launceston, and maintains an inspectorate presence at Wrest Point Hotel Casino and Country Club Casino. The inspectorates oversee gaming operations at the casinos and undertake compliance inspections at hotels and clubs and onboard the *Spirit of Tasmania* vessels.

The Branch is responsible for coordinating and preparing monthly Commission papers. The Executive Director, Revenue, Gaming and Licensing; Director, Liquor and Gaming; Assistant Director, Liquor and Gaming and the Senior Executive Officer provide administrative advice and support at Commission meetings. Figure 1 details the administrative support provided to the Commission.

Wendy Sawford was appointed Executive Director of Revenue Gaming and Licensing on 14 August 2006 following the resignation of Peter Coe.

Figure 1

Administrative Support to the Tasmanian Gaming Commission



Participation in Working Groups and Other Forums

Officers of the Liquor and Gaming Branch represent the Commission in a number of forums and on several inter-jurisdictional working groups. These include:

- The Gambling Industry Group (GIG): GIG is the peak industry representative body, comprising representatives of Tattersalls, Betfair, the Federal Group, Admirals Casino, TOTE Tasmania, the Australian Hotels Association and Registered Clubs

Tasmania. Representatives of the Commission and the Gambling Support Bureau attend GIG meetings as observers and provide advisory services to its members.

- The Tasmanian Gambling Consultative Group (TGCG): The TGCG brings together all relevant State interests in gambling and its community impact. These interests include all gambling industry codes, relevant government bodies, relevant community sector organisations and interested consumer organisations. The aim of the TGCG is to encourage its represented membership to discuss and share information on current issues relating to the impact of gambling on the wider community within Tasmania. The Commission believes this is an important group for mutual discussion.
- The Casino and Gaming Chief Executive Officers Forum (CEOs Forum): The key forum for discussion of inter-jurisdictional gaming regulatory matters. The CEOs Forum is generally held bi-annually, with the key meeting held prior to the annual Gaming Regulators' Conference. The Executive Director, Revenue, Gaming and Licensing Division and the Director, Liquor and Gaming Branch represent the Commission on the Forum.
- Responsible Regulators' Gambling Working Party (RRGWP): Support to the Gaming CEOs is provided by the RRGWP. The purpose of the RRGWP is to provide advice on regulatory responses on responsible gambling issues for consideration by Gaming CEOs. The RRGWP is comprised of senior gaming officers of each member jurisdiction.

Legislative Framework

Gaming Control Act 1993

The Act provides the legislative framework for the licensing and regulation of gaming in the State. Gaming activities covered by the Act include state-wide gaming machine and keno gaming, casino gaming, interactive gaming and wagering and minor gaming.

A Deed of Agreement between the Crown and Federal Hotels Pty Ltd, which grants exclusive rights to Federal Hotels to conduct casino operations and operate keno and gaming machines in Tasmania, is set out in Schedule 1 of the Act.

TT-Line Gaming Act 1993

The gaming operations on board the *Spirit of Tasmania* vessels are controlled by the *TT-Line Gaming Act 1993*. Reciprocal Victorian legislation regulates gaming aboard the two vessels whilst the vessels operate in Victorian waters. The Commission is responsible for the licensing and regulation of gaming on those vessels. The licence to conduct gaming operations is held by the TT-Line Company Pty Ltd. Admirals Casino Pty Ltd holds the franchise for the management of gaming on board the vessels. Gaming activity aboard the two vessels is presently limited to gaming machines.

Major activities and gaming developments in 2006-07

Tasmanian Gaming Commission Strategic Plan

The Tasmanian Gaming Commission released its 2007 Operating Statement in April. The Operating Statement provides a clear public declaration of the Commission's responsibilities and strategic priorities where in the past there had been confusion over the role, responsibilities and independence of the Commission.

The Commission's key role is to be the regulator of gaming in Tasmania and in exercising its functions, the Commission is not performing its functions independently of the State, rather it is a vehicle through which the State operates to control and regulate gaming.

The Operating Statement provides guidance for the future direction of the Commission with a number of core responsibilities identified and strategic outcomes implemented.

The Operating Statement is provided in Appendix 1.

Harm Minimisation Initiatives

The Commission is focussed on improving harm minimisation and consumer protection measures, with a view to prevention of harm before gambling becomes problematic for individuals or groups in the community. The Commission has actively upheld its policy in relation to limiting access to cash in venues. The Commission took serious disciplinary action against Licensed Premises Gaming Licence holders for not enforcing the Commission Rules relating to the provision of EFTPOS transactions for gaming purposes.

The Commission made significant progress in developing a new look responsible service of gambling program. It is proposed that the training will be known as Responsible Conduct of Gaming (RCG), using qualified registered training organisations (RTOs) to deliver a more consistent curriculum, in line with national standards and the Commission's expectations. The Commission's objective is to have a new look RCG system in place during the later half of 2007.

All hotel and club gaming operators are now required to record the surveillance of gaming activities at their premises. The Commission has approved a minimum standard for the systems used in the surveillance of gaming; the standards are comprehensive and include items such as frame rates, retention of data and areas that are required to be covered by surveillance. The Commission has been able to use surveillance records to investigate potential breaches of its rules and standards.

The first social and economic impact study into gambling in Tasmania has commenced. The Commission has provided assistance to the consultant engaged by the Government to conduct the study by providing a large amount of historical information. The Commission will utilise the results from the study to inform future harm minimisation strategies.

Assessment of New Games and Jackpot Systems and the Application of National Standards

Throughout 2006-07 the Commission continued to scrutinise applications for new gaming machine equipment, games, jackpot and operating systems submitted by manufacturers for approval for use in Tasmania.

This approval process ensures that new systems and games do not contain features that are likely to lead to an increase in problem gaming and to ensure compliance with the Australian and New Zealand Gaming Machine National Standards (National Standards), Internet Technical Requirements 3.0 and Uniform Standards for the Regulation of Interactive Gambling (the AUS Model).

In early 2007 a number of changes were proposed for incorporation into the National Standards. The Commission determined to adopt Version 9.0 of the National Standards effective from 1 October 2007, in line with all other jurisdictions.

The Commission approved an upgrade to the existing monitoring system operating in hotels and clubs. The upgraded system provides greater security and flexibility and enables the implementation of Player Information Displays (PID). This feature allows a player to enter the PID screen to view the probability of winning the major prize along with other game information. The upgraded system also incorporates a time display on the game screen.

Gaming machine manufacturers submitted a number of new games for Commission evaluation during this period for operation in Tasmanian casinos, hotels and clubs. Whilst the majority of these were granted approval, a limited number of submissions failed to fully satisfy Commission requirements.

Betting Exchanges

Betfair Pty Limited (Betfair) was granted a Tasmanian Gaming Licence with a betting exchange endorsement on 10 January 2006. In accordance with the Act the Commission approved Betfair utilising its servers based in London until 28 August 2006, at which time it commenced all bet matching from its Technopark location in Glenorchy.

The ever changing and dynamic nature of Betfair's operating systems necessitated the Commission developing an innovative process to cater for system changes which ensures Betfair's systems operate in accordance with the Commission's Internet Gaming Technical Requirements, the Act and the Uniform Standards for the Regulation of Interactive Gaming (the AUS Model).

To make the Betfair system compliant with the Commission's requirements, several significant changes were required including the introduction of pre-commitment levels (loss limits). These loss limits are now provided and can be set by individual players to cap the net amount of player loss possible over set periods of time. Limits can be reduced immediately by players on the system but will not be increase until one week has elapsed from when an increase is requested. Betfair has additionally made this facility available to all players on its UK site.

The Commission has developed and continues to refine an appropriate compliance regime to perform its regulatory role to ensure that Betfair's operations remain compliant with the Commission's requirements at all times.

Communications

The Liquor and Gaming Branch publishes a quarterly newsletter under the banner of the "Liquor and Gaming Review". The newsletter is distributed to the holders of liquor and gaming licences, government agencies both in Tasmania and interstate, media and other Branch and Commission stakeholders.

In addition to providing information on the functions of the Commission and Branch, the newsletter contains articles on gaming issues to educate and improve the awareness of gaming operators and their employees and to enhance and support compliance with legislation.

The Commission also publish their disciplinary actions taken against licensed premises gaming operators and special employees and tabling of new or changes to gaming operators, in the newsletter. The newsletter is posted on the Department of Treasury and Finance's website - containing links to the Tasmanian Gaming Commission (www.gaming.tas.gov.au).

Minor Gaming Review

Minor gaming is regulated in accordance with the provisions contained in Part 4B of the Act.

The term 'minor gaming' is used to refer to a number of games (including bingo, raffles, lucky envelopes and Calcutta sweepstakes) that have been authorised by the Commission and are conducted for the benefit of a not-for-profit organisation or charitable purpose.

The current list of authorised games includes:

- Bingo
- Calcutta Sweepstakes
- Dancing Dollars
- Gratuitous Gaming
- Instant Draw Bingo
- Lucky Envelopes
- Raffles
- Tassie's Best Punter

Minor gaming also relates to games that have been declared exempt. The Commission by notice in the *Gazette* may declare a game, or a game of a class specified in the notice, to be an exempt game. These games include Sweepstakes, Tipping Competitions, Anzac Day Two Up and Raffles (Under \$500).

A review of the regulation of minor gaming activities was commenced in October 2006 with a report presented to the Commission in April 2007 for consideration. The review made recommendations supporting a risk based compliance focus to minor gaming regulation. The report also recommended a number of changes to authorised game rules and conditions reflecting the strategic risk based approach. Recommendations are expected to be progressively implemented during 2007-08.

Tasmanian Gaming Exclusions Scheme Review

During 2006-07 the Commission reviewed the Tasmanian Gaming Exclusions Scheme (TGES), with the review report recommending a host of changes directly targeted to assist problem gamblers, their counsellors and licensees to better manage issues associated with problem gambling behaviour.

The review analysed the administrative arrangements for the Scheme in its current form through conducting consultation with key stakeholders, undertaking a literature review of national and international research of exclusion schemes and by assessing exclusion schemes operating in other Australian states and New Zealand.

The review examined the limitations of the existing Scheme and recommended options for improved delivery based on models of best practice.

The recommendations of the report have been endorsed by the Commission and are expected to be implemented progressively during 2007-08.

Accredited Testing Facilities

During 2006 legislative changes requiring anyone that supplies or intends to supply testing services to a holder of a Tasmanian gaming licence, a gaming operator, casino operator or minor gaming operator to be listed on the Roll were enacted.

At the time of this requirement being introduced there were three companies providing testing and evaluation services to Tasmanian operators. The companies concerned were BMM Australia Pty Ltd, GLI Australia and Technical Systems Testing Pty Ltd, all of whom were successful in gaining listing on the Roll.

Gaming in Tasmania

Casino Operations

Wrest Point Hotel Casino and Country Club Casino

The Deed of Agreement between the Crown and Federal Hotels Pty Ltd provides exclusive rights for the Federal Group to operate table gaming, gaming machines and keno throughout the State until 30 June 2018.

Australian National Hotels Pty Ltd holds the casino licence for Wrest Point Hotel Casino and Tasmanian Country Club Casino Pty Ltd holds the casino licence for Country Club Casino.

The Wrest Point and Country Club casinos offer Baccarat, Blackjack, Pontoon, Roulette, Rapid Roulette, Hold-EM Poker and Money Wheel. The State-wide keno game is also available within the casinos.

Gaming machine numbers remained steady at Wrest Point Hotel Casino and, Country Club Casino, with 745 and 535 machines in operation respectively at each venue as at 30 June 2007.

The Commission maintains a presence in each casino via the Southern and Northern Government Inspectorates. During 2006–07 Inspectors were usually on site during normal business hours and on the busier nights while casino table gaming was operating.

Licensing of Casino Staff

Staff employed at Wrest Point Hotel Casino, Country Club Casino and Admirals Casino as Casino Operatives, Casino Management or Casino Security must be licensed before undertaking gaming duties. The total number of persons licensed to perform gaming duties at these casinos was 581 as at 30 June 2007.

Admirals Casino Pty Ltd

TT-Line Company Pty Ltd (TT-Line) operates two ships *Spirit of Tasmania I* and *II* on the Bass Strait crossing between Devonport and Melbourne. The gaming operations on board the *Spirit of Tasmania* vessels are controlled by the *TT-Line Gaming Act 1993*.

The Commission is responsible for the licensing and regulation of gaming on those vessels. The licence to conduct gaming operations is held by TT-Line; TT-Line has a contractual arrangement with Admirals Casino Pty Ltd for the management of gaming on the vessels.

There are 23 gaming machines on board each vessel and gaming machines are the only form of gaming currently offered by the operator. The tax rate that applied to Admirals Casino during 2006-07 was 17.91 per cent of gross profit for gaming machines. There is no annual licence fee.

During the year, the Government Inspectorate conducted 34 inspections of the gaming rooms aboard the two vessels.

Gaming in Hotels and Clubs

There is a State-wide cap (3 680 machines) on the number of gaming machines permissible in Tasmania. The cap was set by the 2003 Deed of Agreement between the Crown and Federal Hotels Pty Ltd. The 3 680 gaming machines are split between hotels

and clubs and the State's two casinos. The maximum number of gaming machines permitted in all hotels and clubs is 2 500. Individual clubs are limited to a maximum of 40 gaming machines, and hotels are only permitted to operate a maximum of 30 gaming machines.

During 2006-07, 64 applications for licensed premises gaming licences for the operation of keno and gaming machines were assessed. Of the 64 applications, 24 related to renewal of existing licences, 33 related to a change of operator at existing gaming premises and seven related to new keno premises. One hotel ceased normal bar trading during the period and surrendered its licence to operate keno. Of the seven new keno premises licensed, two are yet to have keno equipment installed for operation. There were no new premises licensed for the operation of gaming machines during the reporting period.

Table 1

Electronic Gaming Machines (Hotels and Clubs)

	Hotels		Clubs		Total	
	No of venues	No of machines	No of venues	No of machines	No of venues	No of machines
30 June 2006	94	2217	10	183	104	2400
30 June 2007	93	2202	10	183	103	2385

Hotel and club operators lease machines and keno equipment from the gaming operator (Network Gaming), which also provides training and marketing services to the venues, and coordinates machine and equipment maintenance by Getronics.

Taxation on gaming machines is calculated on gross profit. The tax rates are based on a sliding scale from 20.88 per cent upon the first \$35 million of gross profit and 25.88 per cent upon the rest of the gross profit. The applicable percentage is based on the combined gross profit from all gaming machines in hotels, clubs and casinos (excluding Admirals Casino Pty Ltd).

Operation of Keno in Hotels and Clubs

Keno has been operating State-wide since 1 December 1994. During the year six new premises commenced operating keno but 4 premises withdrew. The total number of premises operating keno moved to 161. The total number of gaming premises that operate both keno and gaming machines reduced by one to 103.

Keno is taxed at the rate of 5.88 per cent of gross profit.

Licensing of Special Employees and Technicians

Persons who are employed to work in hotels or clubs with keno and gaming machines must be licensed as licensed premises gaming licence holders before undertaking any gaming duties. Persons who are employed at Wrest Point Hotel Casino, Country Club Casino and Admirals Casino must be licensed as a Casino Operative, Casino Management or Casino Security before undertaking any gaming duties.

Persons who are employed to install, maintain or repair gaming equipment must be licensed as a Technician.

During 2006-07 1614 special employee licences were issued and 41 technician licences were issued (including renewal applications). As a consequence of incomplete applications, probity and integrity concerns the Commission refused to consider 13 applications.

The total number of licensed special employees increased from 2664 in 2005-06 to 4045 in 2006-07. The increase is due largely to the licensing of around 700 betting exchange operatives who are in the employ of Betfair Pty Ltd, the holder of a Tasmanian Gaming Licence with a betting exchange endorsement. The total number of licensed technicians also increased from 189 in 2005-06 to 194 in 2006-07.

Table 2
Special Employees and Technicians Licences

	2004-05	2005-06	2006-07
Special Employee Licences issued or renewed	718	776	1614
Technician Licences issued or renewed	28	64	41
Applications Refused to Consider	28	24	13
Total Number of Special Employee Licences	2595	2664	4045
Total Number of Technician Licences	171	189	194

Table 3
Special Employees Licences Issued or Renewed by Category

	2006-07
Hotel and Club employees	807
Casino employees	103
Gaming Operator employees	7
Betting Exchange employees	697
Total	1614

Responsible Conduct of Gaming Courses

It is a condition of every special employee licence that the licensee must undertake a Responsible Conduct of Gaming (RCG) course approved by the Commission within three months of being licensed.

The Commission has approved the Australian Hotels Association (AHA) and the Institute of TAFE Tasmania as recognised providers of the RCG in Tasmania. The AHA conducts RCG training courses on a regular basis throughout the State. The Institute of TAFE

Tasmania offers the option of undertaking RCG training as a single module or as a component of its hospitality training certificates.

The Commission is currently reviewing the delivery of RCG to ensure that training is contemporary, consistent and in line with national standards.

Tasmanian Gaming Licence Operations

In late 1999, the Gaming Control Act was amended to provide for the issue of a Tasmanian Gaming Licence (TGL). A TGL provides for the operation, from premises in Tasmania, of Internet gaming and wagering activities. An additional amendment was made to the Act in late 2005 to create a betting exchange endorsement that would allow the operation of a betting exchange within Tasmania.

A TGL can have more than one endorsement that will allow for the conduct of the following:

- fixed odds wagering (horses and greyhounds, where wagers are taken over the internet or telephone);
- sports betting (sports bet wagering over the internet or telephone);
- major lotteries;
- prescribed endorsement; and
- betting exchange.

As at 30 June 2007 there are two (2) TGLs issued. The first is an active TGL that was issued to Betfair Pty Ltd in February 2006 with a betting exchange endorsement. The second TGL is held by PBL Gaming Management Pty Ltd and as yet has not been activated. Its licence is endorsed with simulated gaming and sports betting endorsements.

No new TGL applications have been received in the twelve months to 30 June 2007.

Minor Gaming

Minor gaming is regulated in accordance with the provisions contained in Part 4B of the Act. The term “minor gaming” is used to refer to a number of games including bingo, raffles, lucky envelopes, calcutta sweepstakes, dancing dollars and Tassie’s best punter that have been authorised by the Commission.

The Act requires that the proceeds of conducting minor gaming must be used for the lawful purpose of a not-for-profit organisation or for a charitable reason, and not for the private gain or benefit of any person, except by way of charity. Charitable purposes include education, welfare, sport and recreation.

Under the Act, a permit must be obtained in order to undertake minor gaming activities and these are valid for 12 months. During that period, permit holders are also required to notify the Commission of their intention to conduct games.

Permits are not required for the following activities declared exempt under section 3(8A) of the Act:

- tipping competitions concerning the outcome or occurrence of a sporting event – where a participant does not contribute more than \$150, and total contributions do not exceed \$10 000 and are distributed to winners;

- raffles - where the total prize value does not exceed \$500;
- sweepstakes – where a participant does not contribute more than \$260, and total contributions do not exceed \$10 000 and are distributed to winners; and
- Anzac Day Two-up – where the game known as “Anzac Day Two-up” is played during the period commencing at 0600 hours and ending at 1800 hours on the 25th of April in any year, and the premises upon which the game is conducted is occupied on a permanent basis by an organization, the majority of the members of which, are former members of the defence forces.

During 2006-07, the Commission issued 573 permits to conduct minor gaming. Table 4 lists the number of permit holders that notified their intention to conduct games during that period.

**Table 4
Minor Gaming Permits**

Game	Number of Individual Activity Notifications
Raffles	158
Bingo	63
Lucky Envelopes	326
Calcutta Sweepstakes	19
Gratuitous Gaming	15
Multi Draw Bingo	2

No individual activity notification forms were received to conduct Tassie’s best punter or dancing dollars during 2006-07.

Further information on minor gaming, including permit applications, can be accessed via the Commission’s website at www.gaming.tas.gov.au.

Manufacturers, Suppliers and Testers of Gaming Equipment

In order to sell or supply gaming equipment or testing services to hotels, clubs, casinos and licensed operators in Tasmania, the Act requires manufacturers and suppliers to be listed on the Roll of Recognised Manufacturers, Suppliers and Testers of Gaming Equipment (the Roll). Only those on the Roll can sell or supply gaming equipment or testing services to Tasmanian operators.

The Commission approved the following manufacturers for listing on the Roll during the 2006-07 financial year:

- GTA Pty Ltd,
- Moore Business Systems Australia Ltd,
- Betfair (Developments) Pty Ltd,
- Betfair Technology Pty Ltd,

- Pick'n'Win Operations Pty Ltd,
- Stallion Gaming (Australia) Pty Ltd and
- Technical Systems Testing Pty Ltd

Currently, there are 48 entities listed on the Roll, which can be located on the Commission's web site www.gaming.tas.gov.au.

Community Support Levy

The Act requires that a percentage of the gross profit derived from gaming machines in hotels and clubs is paid into the Community Support Levy (CSL) under the control of the Treasurer. The contribution is 4 per cent of the gross profit from gaming machines operated in hotels and clubs respectively.

In addition, 4% of Tasmanian monthly Betting Exchange commission, derived from brokered wager events held in Australia, is paid to the CSL. The amount attributed to the CSL for the 2006-07 financial year was \$11 725.

Under the Act, the Treasurer must distribute the CSL in the following manner:

- 25 per cent for the benefit of sport and recreation clubs;
- 25 per cent for the benefit of charitable organisations; and
- 50 per cent for the provision of -
 - ❖ research into gambling;
 - ❖ services for the prevention of compulsive gambling;
 - ❖ treatment for the rehabilitation of compulsive gamblers;
 - ❖ community education concerning gambling; and
 - ❖ other health services.

In 2006-07, \$4 498 026 was paid into the CSL from the profits of gaming machines in clubs and hotels and from Betting Exchange commission. This was accumulated for distribution in the proportions specified above.

The Commission performs a strategic oversight function in respect to the CSL and is responsible for making recommendations to the Treasurer on the allocation of funds from the CSL to appropriate projects and services.

With the approval of the Commission and the Treasurer, the Department of Health and Human Services (DHHS) has administrative responsibility for making recommendations to the Minister for Health and Human Services for expenditure in respect to 50 per cent CSL funds that are allocated to them by the Commission. The DHHS also administers 25 per cent of CSL funds dedicated to the benefit of charitable organisations.

The Gambling Support Bureau is located within the DHHS. The Bureau is responsible for policy development and program management in relation to state-wide problem gambling support service delivery, the gambling research program, gambling community education and health promotion, and the Charitable Organisations grants programs. The Gambling Support Bureau is funded through the CSL.

Social and Economic Impact Study

In December 2006 the Treasurer announced the terms of reference for a Social and Economic Impact Study into Gambling in Tasmania as required under Section 151(5) of the Act. The Study is to be completed by 31 March 2008 and is funded entirely from the 50% component of the CSL. In May 2007 the South Australian Centre for Economic Studies was appointed to undertake the study.

The scope of the study is to:

1. establish a framework and methodology to enable the research to be repeated and used for longitudinal analysis;
2. quantify and assess the broad social impacts of gambling in Tasmania;
3. analyse the economic impacts of gambling in Tasmania and quantify the financial impacts upon State and local government, as well as an assessment of its effect upon tourism, recreation, economic development and employment; and
4. identify the incidence of problem gambling in Tasmania and analyse that in comparison with other States and Territories.

Disbursement of the CSL

Problem Gambling Category

In 2006-07, \$1 827 872 was expended on the provision of services to communities including services to assist those persons and their families affected by problem gambling. This amount was disbursed as follows:

- \$592 448 was spent on the provision of support services to assist people affected by gambling. This included personal and family counselling, financial counselling, support groups and the 24-hour telephone helpline.
- \$1 153 082 was spent on the Neighbourhood Houses Program, which comprises a number of initiatives to expand the support services available to the community in Tasmania.
- \$82 342 was spent on Social Programs. Included in these initiatives were programs dealing with mental health promotion and prevention strategy, education and prevention services.

Charitable Organisations Category

An amount of \$200 000 was paid to the charitable grants program, through the CSL in the 2006-07 financial year. Funding of \$94 000 was attributed to the No Interest Loan Scheme and \$106 000 to Lifeline programs.

In 2006-07, 101 charitable grants were approved for 91 organisations totalling approximately \$300 000 (ranging from \$3000 to \$10 000). A list of grant recipients is provided in Appendix 1. This amount will be funded from the CSL in the 2007-08 financial year.

In addition, funding of \$761 608 was allocated to the Neighbourhood Housing scheme as approved by the Treasurer.

Sport and Recreation Category

Sport and Recreation Tasmania (SRT), a business unit of the Department of Economic Development, is responsible for expending 25 per cent of the CSL for the benefit of sport and recreation clubs. It does this through two grant programs, the Facilities Grant Program and the Community Grants Program.

In 2006-07, SRT allocated in excess of \$1.1 million in CSL funds through these programs. As at 30 June 2006 all available funds had been disbursed to meet this commitment.

A list of grant recipients is provided in Appendix 2.

Compliance Inspections

The Compliance team comprises Senior Compliance Inspectors and Compliance Inspectors who undertake duties relating to Liquor and Gaming compliance. The Southern Team is based at 80 Elizabeth Street in Hobart and an office is also maintained at the Wrest Point Hotel Casino complex. The Northern Team is based at Henty House in Launceston with an office also maintained at the Country Club Casino in Prospect.

The Compliance team is responsible for ensuring that casino gaming, State-wide machine gaming, keno gaming and minor gaming are conducted in accordance with the legislation and rules of the games. Inspectors conduct regular inspections of the casinos, the State-wide machine gaming/keno monitoring site, gaming activities at hotels and clubs, gaming on the *Spirit of Tasmania* vessels and minor gaming activities.

To ensure that inspections are conducted in the most efficient and effective manner, procedures and practices are under continuous improvement using risk management and quality assurance methodologies.

As an alternative to taking disciplinary action against a gaming premise, section 78(1) of the Act allows the Commission to direct a licence holder in writing to rectify the matter of concern.

Table 5 lists the number of rectification orders issued by the Commission against a licensed operator or a licensed premises gaming operator:

Table 5
Rectification Orders

Rectification Orders issued 2001-02 to 2006-07		
	Hotels	Clubs
2001-02	48	7
2002-03	43	5
2003-04*	6	2
2004-05*	13	0
2005-06*	9	3
2006-07	16	4

Note: * The use of rectification orders was curtailed during these years, pending amendments to the Act. The Act was amended in 2006.

Breaches of Legislation

The Act gives the Commission power to take disciplinary action against licence holders. Disciplinary action may include the cancellation or suspension of a licence or gaming endorsement, the issue of a letter of censure, the amendment or imposition of conditions on a licence or the imposition of a fine. A fine not exceeding \$10 000 000 may be imposed on a casino, gaming operator, Tasmanian gaming licence or foreign games permit holder and for a listing on the Roll of Manufacturers, a fine not exceeding \$10 000 may be imposed. In the case of an operator of a hotel or club, a fine not exceeding \$5 000 may be imposed.

The Commission takes a serious view of any breach of the legislation or licence conditions. Each case is considered on its merits. In imposing a penalty, the Commission takes into account issues including the seriousness of the breach and the past record of compliance by the venue and licensee.

Gaming Premises

Table 6 lists the disciplinary action taken by the Commission against gaming premises during 2006-07.

Table 6
Disciplinary Action Against Gaming Premises

Licence Holder	Venue	Section of Act	Date of Breach	Outcome
Ravenswood Over 50 Club Association Inc	Ravenswood Over 50 Club	50(2)	19-Jan-2006	Fine \$500
King Island Ventures Pty Ltd	Parers King Island Hotel	50(2), 92(2)	23-Feb-2006	Licence Cancellation
Mornington Inn Pty Ltd	Mornington Inn Hotel Motel	50(2), 92(2)	21-Jul-2006	Fine \$1 000
Michael D Hibberd	Granada Tavern	50(2), 92(2)	7-Aug-2006	Fine \$1000
Brecaryn Pty Ltd	Park Tavern	50(2)	26-Sep-2006	Fine \$500
Enfield Hotel Pty Ltd	Retreat Hotel	50(2)	11-Nov-2006	Fine \$500
Australian National Hotels Pty Ltd	Wrest Point Hotel Casino	137	28-Nov-2006	Fine \$2 500
Theatre Royal Hotel Pty Ltd	Customs House Hotel	92(2)	16-Feb-2007	Licence Suspension For 1 Trading Day
East Devonport Bowls Sporting and Recreation Club Inc.	East Devonport Bowls Club	92(2)	23-Feb-2007	Fine \$1 000
Richard James Palfreyman	Doctor Syntax Hotel	92(2)	4-Apr-2007	Fine \$1 000

Special Employees

Table 7 lists the disciplinary action taken by the Commission against special employee's licence holders during 2006-07.

Table 7
Disciplinary Action against Special Employees

Licence Holder	Section of Act	Date of Breach	Outcome
Christiane Marr	56(1), 94(1)	23-Feb-2006	Licence Cancellation
Laurence Marr	56(1)	23-Feb-2006	Letter of Censure
Andrea Regina Hayes	112S(1)(g)	27-Apr-2006	Licence Cancellation
Wayne Robert Postlethwaite	112S(1)(d)	9-Oct-2006	Licence Cancellation
Danny Wayne Walters	112S(1)(d)	6-Feb-2007	Licence Cancellation
Michael William Mackintosh	56(3)	6-Mar-2007	Licence Cancellation
Paul Maurice Tapp	56(3)	19-Mar-2007	Licence Suspended for four Months

Technicians

There were no instances of disciplinary action taken by the Commission against licensed technicians during 2006-07.

Appendix 1 – Tasmanian Gaming Commission Operating Statement



TASMANIAN GAMING COMMISSION

OPERATING STATEMENT

OVERVIEW

The Tasmanian Gaming Commission's key role is to be the independent regulator of gaming in Tasmania. The Commission's operating statement provides a clear, public declaration of the Commission's responsibilities and strategic priorities.

Clyde Eastaugh Chairman TGC
March 2007

REGULATORY RESPONSIBILITY

In exercising its functions the Commission is not performing its functions independently of the State, rather it is a vehicle through which the State operates to control and regulate gaming. The activities of the Commission are the activities of the State.

The Commission is subject to the direction of the Treasurer in the performance of its functions (s127) but directions cannot be given which interfere with the Commission's statutory functions such as the granting or cancellation of any licence.

As a result of the Treasurer's September 2006 Community Support Levy direction the Commission is responsible for recommending an annual budget and monitoring expenditure against the budget approved by the Treasurer.

The Department of Treasury and Finance has responsibility for the administration of the Gaming Control Act but is not responsible for any of the functions of the Gaming Commission. The Department's role is to ensure that the Commission is and remains properly constituted and otherwise able to carry out its statutory functions.

FUNCTIONS OF THE COMMISSION

The functions of the Commission are outlined in Section 125 of the Gaming Control Act 1993.

The Commission has identified core responsibilities that are critical to the performance of the prescribed functions.

(a) to regulate and control gaming to ensure that it is conducted honestly and free from criminal influence and exploitation

The Commission will ensure appropriate due diligence is undertaken to meet the requirements of the Act.

(b) to investigate and make recommendations to the Minister on matters relating to gaming policy

The Commission will:

- be aware of contemporary gaming issues and new and emerging gaming industry trends
- take a proactive role in relation to the development and implementation of consumer protection and harm minimisation initiatives
- seek to advise the Treasurer on matters it deems to be pertinent to the current and ongoing development of gaming policy in Tasmania.

THE COMMISSIONERS

FUNCTIONS OF THE COMMISSION

(c) to research and investigate matters relating to the control of gaming including the probity and financial security of persons involved in the management of gaming operations

The Commission will ensure that there are appropriate operational policies and procedures in place for the control of gambling.

(d) to liaise with authorities or persons responsible for the regulation and control of the conduct of gaming

The Commission will regularly liaise with identified key stakeholders responsible for the regulation and control of the conduct of gaming.

(e) to review and determine complaints relating to the conduct of gaming

The Commission will establish and promulgate a complaint procedure that meets the requirements of the Act and the Commission's obligations in relation to natural justice.

(f) to perform such other functions as are imposed on it by this Act or any other Act or as are prescribed

The Commission will undertake an annual strategic planning process that will ensure that the immediate and longer-term objectives and responsibilities of the Commission are fulfilled.

CONTACT DETAILS

The Tasmanian Gaming Commission

Phone: (03) 6233 2475
International: +61 3 6233 2475
Email: gaming@treasury.tas.gov.au
Web: <http://www.gaming.tas.gov.au>

Mr Clyde Eastaugh Chairman

Clyde Eastaugh is a foundation member of the Tasmanian Gaming Commission and has served on the Commission for over 12 years. Mr Eastaugh is a public company director and has wide experience in the development and management of community organisations. He brings to the Commission a professional understanding of the gaming industry and the inherent relationships and responsibilities the industry has to the Tasmanian community.

Professor Kate Warner

Professor Warner has been a member of the Commission since 2002. Kate is a Professor of Law at the University of Tasmania and Director of the Tasmanian Law Reform Institute. Professor Warner brings to the Commission an awareness and sensitivity to issues of social justice. As an academic. Kate also has a particular interest in the role of the law in regulating gaming in Tasmania and proscribing and regulating potentially harmful behaviour.

Ms Elizabeth Thomas

Elizabeth Thomas was appointed a Commissioner in 2004. Ms Thomas is an independent business consultant, with extensive business experience in the public and private sectors, including 8 ½ years as CEO of The Public Trustee of Tasmania. Her previous experience includes an active involvement in the distribution of substantial discretionary charitable trust funds. Ms Thomas has a particular interest in contributing to the strategic direction of the Commission.

Appendix 2 – Community Support Levy Grant Recipients 2006–07

Charitable Organisations Grant Program

The following grant program is funded from the CSL and is managed through the Gambling Support Bureau in DHHS.

It should be noted that, while the following projects were approved in 2006-07, the funding is to be expended in the 2007-08 financial year.

Organisation	Project	Grant (\$)
1st Tamar Sea Scout Group	Camping & Safety Equipment for New Venturer Section	2 420.00
2CYC George Town Youth Advisory Group	Funky Feet Fitness	2 427.30
AA Lord Homes Residents Committee	Easy Crafts	2 776.69
Advocacy Tasmania Inc	Advocacy Tasmania Information & Education Programs	1 500.00
Arthritis Tasmania	The Joint Connection	5 000.00
Aust Volunteer Coast Guard Assoc Inc TF2 Triabunna	Navigation Equipment	2 990.00
Autism Tasmania Inc	Stories from the Field	1 000.00
Better Hearing Australia Inc	Rural Hearing Impaired Workshops	1 000.00
Bruny Island Respite & Community House Inc.	First Aid Training for support workers	3 000.00
Campbell Town Area Community Services Board Inc	Campbell Town Community Shed	1 000.00
Carers for Wildlife Tasmania Inc	Wildlife Rehabilitation Enclosures	2 272.60
Cerebral Palsy Tasmania	CP Awareness Program	4 075.00
Chance of Main	Heavy Metal Program Equipment	6 808.69
Clarendon Vale Neighbourhood Centre (a program of The Tasmanian Association of Community Houses)	Developmentally Appropriate Toys and Learning Aids	1 500.00
Clarendon Vale Neighbourhood Centre (a program of The Tasmanian Association of Community Houses)	Developments and Expansion of CROC Services	3 042.40
Community Connection Inc	iparty(R) Southern Schools Project	9 850.00
Cosmos Recreation Services Inc	Cosmos Multi Media Camp ("Creative Spark")	2 000.00
Council On the Ageing Tasmania Inc (Aged & Disability Care & Information Service - ADCIS)	"Information with a purpose"	1 500.00

Organisation	Project	Grant (\$)
Council On the Ageing Tasmania Inc (Living Longer Living Stronger Program TM)	The Living Longer Living Stronger TM Message	1 163.80
Devonport Community House	Devonport Community Garden Playground	5 000.00
Diabetes Australia - Tasmania	"Get a Life" Health & Wellbeing Expos	5 000.00
Dorset Arts Festival Steering Committee	Dorset Arts Festival	1 000.00
Early Support for Parents Inc (Grandparents Raising Grandchildren Program)	Celebrating Grandparent Families	3 000.00
Epilepsy Association of Tasmania Inc	Weekend Camp for Children and Families Affected by Epilepsy	5 000.00
Epilepsy Association of Tasmania Inc	Training programs for staff and volunteers	2 750.00
Family Planning Tasmania - Making Choices Project (Young People and Pregnancy in Tasmania)	"Being Young and Pregnant" Booklet	2 915.00
Family Planning Tasmania - Making Choices Project (Young People and Pregnancy in Tasmania)	"Making Choices - Creating Options" Statewide Conference"	2 755.00
Forcett Community Hall Committee Inc	Recreational Land Upgrade Grant	1 000.00
Giggles Playgroup	Purchase of Toys to Enhance Gross Motor Skills	1 500.00
GLEE CLUB Inc	Shredder	2 729.67
Go! Highlands Inc	Experiencing Arts in the Central Highlands	1 000.00
Go! Highlands Inc	The Parents Place	3 000.00
Goodwood Community Centre	Shalom Community Garden	1 000.00
Guiding Hand Tasmania Inc	Fuel for Guiding Hand Tasmania	3 000.00
Guiding Hand Tasmania Inc	Bread Slicing for the Infirm Clients of Guiding Hand	1 921.70
Haemophilia Foundation Tasmania	Tasmanian Family Camp	3 000.00
Hillcrest Primary School Breakfast Club	Hillcrest Primary School Breakfast Club	3 000.00
Hobart Legacy Inc	Kitchen Refurbishment	5 500.00
Hobart Police & Community Youth Club Inc	Teens in Gym Program	2 854.50
Hobart Women's Health Centre	New Australian Women Friendship Group	3 000.00

Organisation	Project	Grant (\$)
Howrah Playgroup	Shade for Outdoor Play Area	2 662.00
Jordan River Service Inc (Gagebrook Community Centre)	Breakfast Club	3 000.00
Kentish Family Support Service (kare Inc)	Sun Shade for over play equipment	3 000.00
Kickstart Arts Inc	Power 2 - Hip Hop	5 000.00
Kids Foundation	Burn Survivors Network - TANGO	9 850.00
Kingborough Community Garden & Shed Group	Kingborough Community Garden & Shed	3 000.00
Launceston Benevolent Society Inc	Emergency Assistance to Needy Family	1 000.00
Lifeline North West Tasmania Inc	Applied Suicide Intervention Skills Training - Train the Trainers	10 000.00
Lions Club of Queenstown Inc	Strahan Anglican Church Disability Access	3 000.00
Magra Branch Country Women's Assoc	Purchase Reverse-Cycle Heat Pump	2 500.00
Mary's Grange Inc Reachout Program	"Test Drive" Exercise Sessions	1 802.79
Migrant Resource Centre (Southern Tasmania) Inc	What it means to be an African woman in Tasmania	1 000.00
Montagu Community Living Inc	Digital Camera Shade Sail and Swinging Chair	550.00
Mt Arthur Centre	"Back to the Community for Healing"	7 142.00
Northern Children's Network Inc	St Marys Community Child Care Centre	3 000.00
Northern Occupational Support Service Inc	Training Room Establishment	1 700.00
Parkinson's Tasmania Inc	Parkinson's Tasmania Inc Quarterly Newsletter	5 000.00
Pete's Community Shed	Disabled Toilet	2 000.00
Phoenix House (King Island Supporting Disabilities)	Lunch, Fun and Friendship	4 000.00
Playgroup Tasmania Inc	Transportable Sun Shade	3 000.00
Playgroup Tasmania Inc	Mobile Playgroup	10 000.00
Polish Ladies Circle of Hobart	Equipment Project	476.00
Polish Senior Citizens Club	Project Barbecue	650.00

Organisation	Project	Grant (\$)
Polish Welfare Office (Polish Association in Hobart Inc)	Microphone for Day Centre	118.95
Richmond Fellowship of Tasmania Inc	Richmond Glenorchy Veggie Garden	1 000.00
Richmond Fellowship Recreation Program	Richmond Fellowship Recreation Program	518.78
Richmond Fellowship Recreation Program	Road House Ravens Recordings	10 000.00
Richmond Ulverstone Program (Richmond Fellowship of Tasmania Inc.)	Recreation	2 894.99
Riding for the Disabled Association Kalang Inc	Winter Warmth	1 000.00
Riding for the Disabled St Helens	Construction of safe riding area for clients & volunteers	2 970.00
Risdon Vale Neighbourhood Centre Inc	Maintaining Independence	2 944.00
Rosebery Neighbourhood Centre Inc	Dedicated Information Area	500.00
Rotary Club of Oatlands	Catering Trailer	2 980.00
Rotary Club of South Launceston	Shelter & Sound	5 000.00
Rubicon Sea Scout Group	Purchase of Life Jackets for the Group	1 521.60
Sailability Tasmania Inc	Safe sailing for young people with disabilities	6 230.00
Scouts Australia - Tasmania Branch - Blackmans Bay Scout Group	Heating of Blackmans Bay Scout Hall	3 000.00
Sleep Disorders Australia - Tasmania Branch	SDA Community Awareness Campaign (North West)	3 000.00
Somerset Puddleduck Playcentre Inc	Challenging Gross Motor Play Equipment	985.05
South Eastern Nursing & Home Care Assn T/A South Eastern Community Care	Foot Clinic	1 650.00
St Giles Society Inc	Management of Premature Infants	9 960.00
St Helens Marine Rescue Assoc Inc	Essential Rescue Equipment	4 000.00
St Mark's Anglican Church, Bellerive	Upgrading and enhancement of kitchen facilities	1 000.00
St Vincent de Paul Society (Tasmania) Inc	Camping Equipment for Migrant and Disadvantaged Youth Camps	2 411.05
Stick Stop & Wobble Inc	Project 1: Stick Stop & Wobble Wobble CD	3 000.00

Organisation	Project	Grant (\$)
Strait Across Artists	Strait Art Works Gallery	1 500.00
Taz Kidz Club	2008 Taz Kidz Club State Conference	7 142.00
Taz Kidz Club Champs Camps (North)	Champs Camps Tasmania	1 000.00
The Salvation Army Tasmania Property Trust	Fun, Food & FACTS	1 000.00
The Tasmanian Deaf Society	It's too Loud Test and Protect	9 780.00
The Unit Committee TS Argonaut Inc	Kayak Grant	1 500.00
Ulverstone Community House Inc	Community Garden Pergola +	1 000.00
United Nations Youth Association of Tasmania	State Conference	1 000.00
Variety the Children's Charity Tasmania Tent 78 Inc	Liberty Swing Program	5 000.00
War Widows' Guild of Australia Tasmanian Branch Inc	Provision of Function Facilities	1 165.00
Warrane Senior Citizen's Club Inc	A Stove for Preparing Meals for Seniors	864.00
West Moonah Action Group Inc	West Moonah Community House Mobile Activity Project	1 126.40
Women's Legal Service Tasmania Inc	Access to Justice for Everyone - How to Better Help Your Client with a Disability	750.00
Zonta Club of Storm Bay Inc	Breast Care Cushion Project	600.00
Zonta Club of Storm Bay Inc	Sewing Machine for Breast Care Cushion Project	300.00
Total		298 996.96

Facilities Grant Program

The following grant programs are funded from the CSL and are managed by Sport and Recreation Tasmania, a business unit of the Department of Economic Development.

It should be noted that although the projects listed below were approved in 2006-07, a small number have not yet requested payment.

Organisation	Project	Grant (\$)
Bicheno Community Development Association	To provide a cricket training facility in Bicheno.	1 500
Birralee and Districts Pony Club	To provide a dressage arena surface.	5 390
Bridport Golf Club	To construct gravel paths.	4 730
Brighton Football and Hobart United Soccer Clubs	Lighting for the Thompson Oval.	55 000
Burnie Clay Target Club	To rebuild trap house.	1 630
Central Regional Junior Soccer Association	To install drainage at Mt Nelson Oval.	7 700
Clarence Junior Football Club	Redevelopment of the Howrah Primary School bottom sports grounds.	32 950
Devonport Little Athletics Centre	To apply a synthetic surface to a concrete runway.	3 490
Dorset Council	To reline the three pools at the Branxholm Swimming Centre.	24 234
Fernpark Pony and Riding Club	To upgrade round yard and secure holding yards.	8 140
Furneaux Field and Game Association	To install reticulated power.	2 856
Geilston Bay Tennis Club	To construct an additional number six court and relocate the hitting wall.	42 000
Glenorchy City Council	To develop the Glenorchy Wellington Park entrance and trail.	25 260
George Town Cycling Club	To repair and resurface a track.	33 929
George Town Saints Netball Club	To construct two new netball courts in George Town.	29 723
Huon Valley Soccer Club	To construct new change rooms at the Ranelagh Recreation Ground.	33 364
Huonville Cricket Club	To construct a cricket coaching and practice facility.	22 000
Kentish Council	To upgrade the Railton Recreation Ground change rooms.	12 500
Latrobe Council	To upgrade the heating system of the municipal pool.	40 000

Organisation	Project	Grant (\$)
Launceston Kart Club	To upgrade safety requirements for the staging of the 2007 Tasmanian Karting Championships.	8 682
Longford Tennis Club	To pave the courtside area.	2 600
Meander Valley Council	To redevelop and upgrade facilities at Prospect Vale Park through the refurbishment of the change rooms.	100 000
Meercroft Park Sports Centre	To install floor coverings.	9 860
New Norfolk Rowing Club	To construct a boat and oar storage facility.	1 656
New Norfolk Tennis Club	To repair and resurface tennis courts.	35 216
Northern Tasmanian Cricket Association	To install irrigation on ground number two.	17 125
North-West Bay Golf Club	To upgrade irrigation system to use recycled water.	55 600
Orford Bowls Club	To erect a shade cover.	3 238
Paringa Archers Launceston	To install a monitored alarm system.	1 983
Paringa Archers Launceston	To provide a bow room.	5 936
Perth Football Club	To upgrade the visitors' change sheds and replace goal posts.	7 711
Queenborough Little Athletics	To extend the long jump pit.	1 044
Queenstown Golf Club	To repair the drainage system.	8 333
Riverside Tennis Club	To replace two courts.	28 457
Rosny Park Bowls Club	To repair the car park.	3 595
Royal Hobart Bowling Club	To level the paved area adjoining two sides of the green.	8 000
Sandy Bay Sailing Club	To upgrade the club's Long Point Road facility.	41 300
Scottsdale Football Club	To install lighting to the main arena of the Scottsdale Recreation Ground.	33 580
Slab Road Cricket Club	To install a fully automated irrigation system.	20 330
Smithton Country Club	To resurface the bowling green.	5 500
South Burnie Bowls Club	To install a drinking fountain.	811
Southern Tasmanian Table Tennis Association	To install flooring in the stadium.	16 000
SSAA Huon Combined Shooting Club	To develop a new range.	4 456
St Marys Sports Centre	To purchase a watering system (pump, polypipe and fittings).	9 287
Tamar Rowing Club	To construct wheelchair access to the club.	7 128
Tasman Council	To refurbish the floor of the community centre.	5 648

Organisation	Project	Grant (\$)
Tasmanian Diving Association	To replace four diving springboards, re-engineer four fulcrums and bases and apply new surface to an existing board.	18 072
Tasmanian Pony and Riding Club	To upgrade the cross country course.	12 200
Tasmanian Rowing Council	To upgrade the existing female amenities block.	20 400
Ulverstone Softball Association	To erect a softball safety backstop barrier.	15 295
Waratah Wynyard Council	To construct a walking track through the Cam River Reserve.	10 000
Western Schools Soccer Association	To install two additional flood lighting poles.	5 175
	Total	<u>910 614</u>

Community Grants Program

Organisation	Project	Grant (\$)
Australopers Orienteering Club	To purchase GPS units	558.00
Bothwell Gun Club Inc	To purchase a Canterbury Trapmaster	5 100.00
Brighton Council	To install soccer goals at Thompson Oval	1 100.00
Burnie Baptist Hockey Club Inc	To purchase junior goalkeeping equipment	352.00
Burnie Table Tennis League Inc	To purchase safety barriers	982.00
Campbell Town Tennis Club Inc	To purchase a tennis ball throwing machine	995.00
Castra Cricket Club	To purchase a portable score board and 24 cricket balls	647.00
City Marians Sports Club Inc	To purchase bibs markers and balls	1 962.00
Clarence City Council	To purchase equipment for the Risdon Vale Recreation/Sports Program	830.00
Clarence District Football Club Inc	To develop participant administrative skills	2 303.00
Deloraine Golf Club Inc	To purchase a fairway mower	10 000.00
Deloraine Junior Basketball Club	To purchase height adjustable backboards	1 500.00
Derwent Hockey Club Inc	To purchase a ball cage, cones, dome markers, balls, bags and bibs	2 500.00
Derwent Valley Field and Game Inc	To purchase sporting clay traps	7 888.00
Devonport Golf Club Inc	To purchase a surrounds mower	10 000.00
East Derwent Little Athletics Centre	To purchase PVC training hurdles	354.00
East Derwent Little Athletics Centre	To purchase a tiller to prepare jump pits	338.00
Freycinet Golf Club Inc	To purchase surrounds mower	6 728.00
Friends Old Scholars Netball Club Inc	To purchase a small first aid kit, netballs, bag, hand pump, marker cones, training bibs and a whistle	1 742.00
Friends Old Scholars Netball Club Inc	To conduct a coaching development program	200.00
Friends Old Scholars Netball Club Inc	To conduct an umpire development program	700.00
Furneaux Field and Game Association Inc	To purchase and install automatic traps	2 950.00
George Town Cricket Club Inc	To conduct a coach development program	1 000.00
George Town Cricket Club Inc	To conduct a junior skills development program	1 000.00

Organisation	Project	Grant (\$)
Hobart Districts Little Athletics Centre Inc	To purchase a Sun Safe - Shade	1 958.00
Hobart Springboard Diving Club Inc	To purchase basic dry land equipment	432.00
Hobart Springboard Diving Club Inc	To implement a coach development program	1 165.00
Huon Valley Council	To purchase uneven bars and a landing mat.	3 000.00
Kentish Polocrosse Association Inc	To purchase a racquet and training kit, a John Deere Lawn Tractor, a brush cutter and a storage container	4 015.00
King Island Council	To conduct Streetwise coaching jam sessions	1 828.00
Latrobe Council	To purchase an inflatable apparatus (play equipment)	5 300.00
Launceston Golf Club Limited	To purchase a mower for the rough	10 000.00
Lietinna Hall Committee Inc	To purchase a badminton net, cricket stumps, a cricket bat, cricket pads, wicket keeper leg guards, batting gloves, a pitch ball, cricket helmets, wicket keeping gloves and a Wilson badminton set	475.00
Meander Valley Gymnastics Club Inc	To purchase a floor strip, landing mat, parallel bar rail pad, uneven bar rail pad and an intermediate mushroom	852.00
Mowbray Golf Club Inc	To purchase a greens mower	10 000.00
New Norfolk Rowing Club Inc	To purchase a racing quad scull	9 830.00
New Town Croquet Club Inc	To purchase mallets, hoops, finishing pegs, grooved balls and rules, and introductory notes to assist the club in providing croquet for children	1 408.00
North West Athletic Club Inc	To purchase public announcement speakers and a notepad computer with software for timing	1 916.00
North West Bay Golf Club Inc	To purchase a tees and surrounds mower	10 000.00
Northern Polocrosse Club Inc	To purchase a coaching kit	1 287.00
Northern Tasmanian Cricket Association Inc	To purchase a wicket mower	5 182.00
Oatlands Golf Club Inc	To purchase a greens mower blade overhaul	822.00
Paringa Archers Launceston Inc	To purchase bows and arrows	2 928.00
Queechy Hockey Club Inc	To purchase junior goal keeping equipment	1 127.00
Queenborough Little Athletics	To purchase starting block and boundary bunting	366.00
Riverside Golf Club Inc	To purchase a mower	10 000.00

Organisation	Project	Grant (\$)
Rogaining Tasmania Inc	To purchase first aid kits and two GPS receivers	431.00
Scottsdale Crows Football Club Inc	To purchase a weight bench, an exercise bike, a curl bar, a spin lock bar, discs, a dumbbell, a weight stand, a punch bag, bag stands, a speedball kit, bag mitts, a cross trainer and a skipping rope.	2 213.00
Slipstream Circus Inc	To purchase a German wheel, balancing chairs, a handstand platform, a Russian barre, a walking globe, a balance ladder, juggling balls, diabolos, manipulator hats, cigar boxes and parallel bars	4 203.00
Smithton Football Club Inc	To purchase 10 footballs, a kicking net, a handball net, speedball mitts, boxing gloves, focus pads, full-face head guard, a combination board, a circuit timer, push up handles, an exercise wedge, a tackle bag, a bodyguard, a ruck bag, fending pads, a Man-on-mark and an exercise bike	2 610.00
Southern Tasmanian Veterans Cycling Club Inc	To prepare a booklet for participants	380.00
Southern Tasmanian Veterans Cycling Club Inc	To purchase a mobile phone, core flute signs, cones, a lollipop sign, a safety vest and bollards	657.00
Sports Medicine Australia - Tasmanian Branch	To provide sport safety courses throughout the state	4 860.00
Spreyton Cricket and Bowls Club Inc	To purchase scoreboards	3 450.00
St Anne's Cricket Club Inc	To purchase training and coaching aids	2 459.00
St Helens Croquet Club Inc	Purchase a lawn mower	1 122.00
Tamar Rowing Club Inc	To purchase Olympic bars and weights, an incline bench, a leg press, squat racks, a dumbbell rack, a power tower, a Series 7 machine package, a flat bench, a flat/high bench for arm draw, wooden/rubber weight platforms, floor mats and rubber tiles	8 809.00
Tamar Yacht Club Inc	To purchase an outboard motor and trailer	3 308.00
Tasmania Golf Club Inc	To purchase a Verti-Drain	10 000.00
Tasmanian Canoe Club Inc	To purchase three each of animus canoes, helmets, buoyancy vests, spray decks and paddles	2 400.00
Triathlon South	Promotional program	534.00
Triathlon South	To purchase racing and safety equipment (bike racks, a trailer to transport and secure equipment, road signage, marker buoys for the water and timing equipment)	8 518.00
Triathlon South	Training of the technical officer and the Board of	1 257.00

Organisation	Project	Grant (\$)
	Management	
Ulverstone Judo Club Inc	To purchase judo mats	7 882.00
Ulverstone Rowing Club Inc	To purchase a coaching/safety boat and transport trailer	2 820.00
Zodiacs Gymnastics Club Inc	To purchase beam safety matting	7 451.00
	Total	220 984.00

Statistics

	Page No
Player Expenditure, Taxation and Fees 2002-03 to 2006-07	40
Annual Gaming Machine Player Expenditure by Municipality 2005-06 and 2006-07	42
Tax Rates Relating to Gaming Activities in Tasmania	43
Licensed Premises Gaming Licence Applications 01/07/06 to 30/06/07	44
Special Employee and Technician Licences 01/07/06 to 30/06/07	44
Complaints Received and Investigated by the Commission 01/07/06 to 30/06/07	45
Summary of Community Support Levy Expenditure 2006-07	46

Player Expenditure, Taxation and Fees 2002-03 to 2006-07

CASINOS	TAXATION AND FEES					PLAYER EXPENDITURE				
	2002-03 \$	2003-04 \$	2004-05 \$	2005-06 \$	2006-07 \$	2002-03 \$	2003-04 \$	2004-05 \$	2005-06 \$	2006-07 \$
Table Gaming	396 600	88 161	70 962	73 607	72 887	7 032 328	7 157 592	8 063 780	8 364 448	8 282 667
Gaming Machine ¹	19 728 768	21 668 385	23 301 873	21 718 957	22 076 137	81 791 259	89 510 150	93 377 417	90 657 981	91 338 831
Keno Gaming	90 481	111 740	120 421	131 845	135 545	1 851 479	1 900 343	2 047 980	2 242 264	2 305 185
Racetrax ²	2 585	149	95	n/a	n/a	43 960	22 904	10 808	n/a	n/a
Casino Unclaimed Prizes ³	8 033	4 065	3 975	4 360	3 999					
Total Casinos	20 226 467	21 872 500	23 497 326	21 928 770	22 288 569	90 719 026	98 590 989	103 499 986	101 264 693	101 926 682
EXTERNAL GAMING IN HOTELS AND CLUBS										
Gaming Machines	27 032 670	31 126 387	31 516 418	28 011 133	28 712 264	111 466 952	121 520 560	125 713 622	109 421 478	112 154 027
Keno Gaming	972 268	963 900	1 173 513	1 196 185	1 230 969	16 219 333	16 454 898	19 957 710	20 524 689	20 780 179
Keno Unclaimed Prizes	217 189	229 868	285 129	254 929	280 609					
Total Hotels and Clubs	28 222 127	32 320 155	32 975 060	29 462 246	30 223 842	127 686 285	137 975 458	145 671 332	129 946 167	132 934 206
INTERNET GAMING⁵										
Internet Casino	1356	n/a	n/a	n/a	n/a	n/a	n/a	n/a	n/a	n/a
Internet Unclaimed Prizes	0	n/a	n/a	n/a	n/a					
Total Gaming Taxation/Expenditure	48 449 950	54 192 655	56 472 386	51 391 016	52 512 411	218 405 311	236 566 447	249 171 318	231 210 860	234 860 889
LICENCE FEES AND PENALTIES										
Casino Licence Fees ⁴	1 703 365	2 553 400	2 757 600	2 853 600	2 914 799					
Casino Penalties	0	13 000	0	0	39 694					
Licence Premises Gaming Licence Fees	285 443	294 884	287 807	281 320	254 821					
Penalties	6 050	1 700	3 500	104 210	4 000					
Tasmanian Gaming Licence Fees	540 000	n/a	n/a	161 556	423 500					
Total Fees and Penalties	2 534 858	2 862 984	3 048 907	3 400 686	3 636 814					

	TAXATION AND FEES					PLAYER EXPENDITURE				
	2002-03	2003-04	2004-05	2005-06	2006-07	2002-03	2003-04	2004-05	2005-06	2006-07
OTHER FORMS	\$	\$	\$	\$	\$	\$	\$	\$	\$	\$
Lotteries	21 633 169	21 883 218	22 132 183	22 866 837	24 134 062	27 669 065	27 795 613	27 874 285	28 799 942	30 395 543
Soccer Pools	68 093	55 483	58 620	51 882	47 636	110 056	98 909	101 913	89 698	82 816
Minor Gaming	5 692	282 512	53 426	20 520	21 000	n/a	n/a	n/a	n/a	n/a
Tipstar	30 177	37 586	29 363	29 341	27 226	50 206	59 104	54 458	54 647	51 020
Betting Exchange										
Tax				446 055	2 461 983				n/a	n/a
Product Levy				523 465	2 536 319				n/a	n/a
Total Other Forms	21 737 131	22 258 799	22 273 591	23 938 100	29 228 225	27 829 327	27 953 626	28 030 655	28 944 288	30 529 380
Total Taxation and Fees/Expenditure	72 721 939	79 314 438	81 794 884	78 729 802	85 377 450	246 234 638	264 520 073	277 201 973	260 155 148	265 390 269

Notes:

1. The figures reported for Casino gaming machines and racetrax includes Admirals gaming.
2. Racetrax ceased operation in October 2004.
3. Casino unclaimed prizes includes gaming machine and racetrax unclaimed prizes.
4. 2003-04 Casino licence fees were adjusted following passage of the revised *Gaming Control Act 1993*.

Tasmanian Annual Gaming Machine Player Expenditure by Municipality 2005-06 and 2006-07

Municipality		2005-06	2006-07
Combined Municipalities	[2]	\$13 991 457	\$15 533 675
Burnie		\$7 219 951	\$7 671 126
Central Coast		\$6 122 617	\$6 268 571
Clarence		\$7 553 851	\$7 870 499
Devonport		\$10 376 788	\$11 350 927
Dorset		\$1 412 739	\$1 388 421
George Town		\$1 888 918	\$1 863 987
Glamorgan-Spring Bay		\$1 233 171	\$1 204 192
Glenorchy		\$18 467 334	\$19 899 011
Hobart	[3]	\$7 657 998	\$7 426 876
Huon Valley		\$1 519 296	\$1 846 530
Kingborough		\$1 700 379	[2]
Launceston	[3]	\$17 045 718	\$17 510 673
Sorell		\$2 282 799	\$2 471 766
Waratah-Wynyard		\$5 372 500	\$5 288 324
West Coast		\$2 536 047	\$2 512 037
West Tamar		\$2 091 860	\$2 288 999
Total		\$108 473 423	\$112 395 614

Notes

- [1] Player expenditure is the total amount wagered less the amount won, by people who gamble.
- [2] Municipalities with less than three premises have been combined to protect information of a highly sensitive commercial nature:
Break O'Day, Brighton, Circular Head, Derwent Valley, Kentish, King Island, Kingborough, Latrobe, Meander Valley, Northern Midlands, Southern Midlands.
- [3] Figures for Hobart and Launceston exclude gaming machines operating at Wrest Point and Country Club Casinos.

Tax Rates Relating to Gaming Activities in Tasmania

Gaming Activity	Tax Rate
Casino Table Games	0.88% of annual gross profit
Keno	5.88% of annual gross profit
TT-LINE (Spirit of Tasmania vessels)	
Gaming machines for TT-Line	17.91% of annual gross profit
Other forms of gaming for TT-Line	7.91% of annual gross profit
Gaming Machines ¹	<i>Annual Gross Profit(\$)</i>
	<35 million
	>35 million
	20.88%
	25.88% of excess
Additional 4% CSL derived from Hotels and Clubs annual gross profit	
Internet Gaming	
Betting Exchange	
<i>Events held in Australia</i>	15% of commission received plus an additional Product Fee being 20% of commission received from all racing events held in Australia
<i>Events held outside Australia</i>	10% of commission received
Additional CSL amount being 4% of commission received from Tasmanian residents on events held in Australia. ²	
Lotteries (no state lotteries)	100% of duty paid to Victorian Government for Tasmanian subscriptions. Minimum return to player is 60%.
Tattersall's	79.4% of player loss where GST is payable 90% of player loss where GST is <u>not</u> payable
Footy Tipping	58.41% of player loss where GST is payable 67.5% of player loss where GST is <u>not</u> payable

Notes:

1. Gaming machine tax is calculated on combined gross profit for both casinos and all hotels and clubs.
2. This amount is paid into the CSL by the Treasurer.

Licensed Premises Gaming Licence Applications 2005-06 to 2006-07

Applications Processed		Applications Approved		Applications Approved		Applications Rejected	
		Without special conditions		Subject to special conditions			
2005-06	2006-07	2005-06	2006-07	2005-06	2006-07	2005-06	2006-07
49	64	48	64	1	0	0	0

Of the 64 licensed premises gaming licence applications processed in 2006-07, 33 related to a change of operator at an existing gaming venue (22 keno and gaming machine venues and 11 keno only venues), while seven applications related to new keno venues.

In addition to the above, 24 licences were renewed during the 2006-07 year.

Special Employee and Technician Licences Issued 2006-07

	Special Employees				Technicians
	Casino	Licensed Premises Gaming Operative[2]	Gaming Operator	Tasmanian Gaming Licence	
Licences Issued [1]	103	1504	7	0	41
Applications Rejected	0	13	0	0	0
Licences as at 30/06/2006	582	3410	43	10	194
Provisional Licences as at 30/06/2006	8	2	0	0	0
Applications Pending 30/06/06	2	113	1	0	6

[1] Licences issued includes all new licences issued, renewed licences as well as existing licences that have been upgraded to a new category of licence.

[2] Licensed Premises Gaming Operative includes Hotel, Club and Betting Exchange employees

Complaints Received and Investigated by the Commission 2006-07

Operations	Table games	Keno	Gaming machines	Exclusion	Betting Exchange	Other (general)	Minor gaming	Total
Casino	12	1	7	0	N/A	2	0	22
Premises	N/A	16	17	1	N/A	1	0	35
Gaming Operator	N/A	7	2	0	N/A	0	N/A	9
Betting Exchange Operator	N/A	N/A	N/A	0	11	N/A	N/A	11
Other	N/A	0	0	1	0	1	4	6

Summary of CSL Expenditure 2006-07

	50% of Levy to: Support Services, Research, Community Education, Other Health Services	25% of Levy to: Sporting Organisations	25% of Levy to: Charitable Organisations	TOTAL
	\$	\$	\$	\$
Balance Carried forward 2005-06				220 895
Receipts	2 249 013	1 124 506	1 124 506	4 498 026
Expenditure				
Gambling Support Services	592 448			592 448
Gambling Community Education	82 342			82 342
Gambling Research	4 429			4 429
Sport and Recreation Grants		1 170 048		1 170 048
Grants Programs			200 000	200 000
Neighbourhood Houses	1 153 081		761 608	1 914 690
Total Expenditure	1 832 300	1 170 048	961 608	3 963 957
Balance 30 June 2007 *				754 964

*Note: Balance as at 30 June 2007 includes a number of committed projects which are yet to be funded including the Social and Economic Impact Study into Gambling in Tasmania and \$299,000 in Charitable Grants.

The variation between the allocation from the Sport and Recreation Grants and the Facilities and Community grants program relates to expenditure carried forward from the 2005-2006 financial year.

Glossary

Betting Exchange

A betting exchange means a facility that enables persons to:

- (a) place or accept, through the betting exchange operator, wagers with other persons; or
- (b) place with the betting exchange operator wagers that, on acceptance, are matched with opposing wagers placed with and accepted by the operator (so as to offset all risk to the operator);

Break Even Network:

A group of gambling support service providers, contracted by the Department of Health and Human Services and funded through the Community Support Levy, offering counselling services and support to anyone affected by gambling.

Casino gaming:

Includes wagers on table games, gaming machines and keno systems at a casino. Casino games have set rules and fixed odds, designed to return a percentage from each wager to the casino operator.

Commission Rules:

Section 91 of the Act enables the Commission to make rules for the conduct of gaming in licensed premises in respect of which a licensed premises gaming licence is in force. This type of licence is issued to clubs and hotels.

Gambling:

The lawful placement of a wager or bet on the outcome of a future uncertain event.

Gaming:

Gaming is all legal forms of gambling other than racing and sports betting, such as lotteries, poker and gaming machines, casino gaming, football pools, interactive gaming and minor gaming.

Gaming Machines:

A device where a player may place a wager on a game of pure chance or a game of both chance and an application of game rules, but not pure skill or manual dexterity with potential to win a prize either in cash or in kind. In most jurisdictions, including Tasmania, operators must return at least 85 per cent of wagers to players as winnings, either by cash or a mixture of cash and product. Gaming machines have the capacity to be linked in order to offer major jackpots.

Gratuitous gaming:

Games played strictly for fun where there is no entrance fee and no benefit or prize value.

Instant lottery:

This is more commonly known as 'scratchie tickets', where a player scratches a coating off the ticket to identify from the characters underneath, whether the ticket is a winner. Prizes in the instant lottery are paid on a set return to players and are based on the number of tickets in a set, the cost to purchase the tickets and a set percentage retained by the operator for costs.

Interactive gaming:

Interactive gaming is defined as gambling on activities conducted via an Internet casino site. It specifically excludes wagering in the form of racing and sports betting and lotteries via the Internet.

Keno:

A game where a player wagers that their chosen numbers match any of the 20 numbers randomly selected from a group of 80 numbers via a computer system. Keno is linked to all licensed gaming venues in Tasmania enabling the operator to offer large jackpot prizes. Keno has a fixed pay-scale such that the payout for each wager is established by rules, and is independent of the total wagers made on the game.

Licensed premises gaming licence:

A licensed premises gaming licence authorises the holder to obtain and possess gaming machines, keno equipment and other gaming equipment at the licensed premises to which the licence relates. This type of licence is issued to clubs and hotels.

Lotteries:

Lotteries are conducted Australia-wide by both government and commercial operators. There are three components to a lottery, the purchase of a ticket, a draw and a prize. A person, whose ticket is selected in a lottery, wins a prize based on the total amounts wagered after deduction of a set percentage by the operator to cover costs. Lotteries are sold at various outlets around Australia such as newsagents. The operators may also conduct lotto, pools and instant lotteries.

Lotto:

A game where a player selects any six numbers from 1 to 45 in anticipation that those numbers will be among 8 numbered balls, randomly drawn from a ball draw device containing 45 balls numbered from 1 to 45. There are five prize divisions, with division one being the major prize. The amount of prize pay-out for each division is dependent on the amount of wagers made, less the operator's costs.

Minor gaming:

The collective name given to raffles, bingo, lucky envelopes and the like.

On-course bookmakers:

Persons licensed to accept wagers at a racetrack on both horses and greyhound racing. A player can wager any amount above a set minimum and will receive the bookmaker's odds at the time of making the wager, irrespective of whether the bookmaker later alters those odds.

On-course totalisator:

This is a TAB operated at a racecourse during race meetings.

Pools:

The pools is a numbers game of chance where the winning numbers are based on the results of the United Kingdom or Australian soccer matches.

Player expenditure;

The amount of money that a player has spent on gambling.

Racetrax:

A simulated horse and greyhound racing game.

Racing:

Is the legal betting with bookmakers and totalisators, both on racecourses and off-course (TAB).

Special employee:

A special employee is the holder of a licence under the *Gaming Control Act 1993* who may be employed by a gaming venue or casino to undertake prescribed duties in relation to gaming operations, typically the operation of keno, gaming machines and casino table games.

Sports betting:

The wagering on all types of local, national and international sporting activities (other than the established forms of horse and greyhound racing), whether on or off-course, in person, by telephone, or via the Internet.

Technician:

A technician is the holder of a licence under the Act who may install, repair or maintain gaming equipment in Tasmania, including gaming machines, security systems and gaming equipment.

Totalisator Agency Board (TAB):

This form of gaming is Australia-wide and is the amount wagered at TAB outlets (other than those on a race track). Totalisator gaming is where a player makes a 'unit' wager, the operator deducts a percentage of the total units wagered, and

the remainder is returned as dividends (winnings) to players in multiples of the unit wagered.

Wagering:

Wagering is all legal forms of gambling on racing and sporting events.