

TASMANIAN GAMING COMMISSION

2004-05 ANNUAL REPORT

Chairman’s Report	5
Introduction	7
Functions of the Commission	8
Support to the Commission	9
Participation in Working Groups and Other Forums	9
Legislative Framework	11
<i>Gaming Control Act 1993</i>	11
<i>TT-Line Gaming Act 1993</i>	11
Major Activities and Gaming Developments in 2004-05	12
Review of the Role of the Commission	12
Harm Minimisation Initiatives	12
Assessment of New Games and Jackpot Systems	13
Australian Gambling Statistics	13
Public Accounts Committee	14
Gaming and Liquor Information System	14
Impact of New Smoking Restrictions on Gaming Activity	14
Risk Based Compliance Project	15
Gaming in Tasmania	16
Casino Operations	16
<i>Wrest Point Hotel Casino and Country Club Casino</i>	16
Licensing of Casino Staff	16
<i>Admirals Casino Pty Ltd</i>	16
Gaming in Hotels and Clubs	17
Operation of Keno in Hotels and Clubs	18
Licensing of Special Employees and Technicians	18
Responsible Service of Gaming Courses	18
Tasmanian Gaming Licence Operations	19
Minor Gaming	19
Community Support Levy	21
Problem Gambling Category	22
Charitable Organisations Category	22
Sport and Recreation Category	23
Equipment and Manufacturers	24
Gaming Inspection	24
Breaches of the Legislation	25
Licensed Venues	25
Special Employees	26
Appendix 1 - Community Support Levy Grant Recipients 2004 – 05	27
Charitable Organisations Grant Program	27
Community Sport and Recreation Tasmania Program	29
Facilities and Open Space Development Program	37

Statistics	40
Gaming Turnover, Taxation and Fees 2000-01 to 2004-05.....	41
Tax Rates Relating to Gaming Activities in Tasmania.....	43
Exclusions.....	44
Licensed Premises Gaming Licence Applications 01/07/04 – 30/06/05	45
Special Employee and Technician Licences Issued 01/07/04 – 30/06/05	45
Complaints Received and Investigated by the Commission 01/07/04 - 30/06/05	46
Summary of CSL Expenditure 2004-05	47
Glossary	48

CHAIRMAN'S REPORT

This year has been one of consolidation and review for the Tasmanian Gaming Commission after ten years of operating as the independent body responsible for the regulation of gaming in Tasmania.

Inaugural Chairman, Mr Don Challen resigned as Chairman in 2003 and following the expiry of his appointment as a Member, Ms Liz Thomas was welcomed to the Commission in July 2004.

I wish to publicly acknowledge Don's significant contribution to the regulation of the Tasmanian gaming industry through his leadership, drive and public interest in making the Commission an industry leader that has greatly benefited the Tasmanian community.

Ms Thomas was formerly the Public Trustee for Tasmania and brings to the Commission high-level corporate governance and management skills gained from a varied career including over eighteen years in the Trustee Industry. Ms Thomas has also been involved in the distribution of some of Australia's largest discretionary charitable trust funds.

A major strategic thrust for the Commission this year has been to refresh its objectives for the regulation of gaming in Tasmania in order to provide industry leadership and guidance, clarity of purpose, transparency in decision-making and alignment of issues for the future.

A number of important issues have been identified that will impact on the future direction and operation of the Commission. These include:

- identifying key stakeholders;
- reviewing complaint resolution processes;
- reviewing the Community Support Levy (CSL) process in light of the report on the CSL from the Public Accounts Committee of Parliament;
- reviewing and developing effective and ongoing harm minimisation and consumer protection strategies; and
- appropriate resourcing and support.

In keeping with the strategic imperative, the Commission made a separate submission to the Parliamentary Standing Committee of Public Accounts as part of the inquiry into the administration of the CSL.

The Commission continues to communicate with stakeholders and in keeping with the Commission's desire to improve communication, I now attend (together with the Liquor and Gaming Branch delegate) the regular meetings of the Tasmanian Gambling Consultative Group.

The aims and description of this Group are provided in the body of this report.

The Commission continues to monitor the plethora of research being undertaken on gaming issues, and promotes and develops contemporary harm minimisation programs and community protection strategies.

The National Framework on Problem Gambling, a joint initiative of the Australian Government and State and Territory Governments through the Ministerial Council on Gambling, has the aim of minimising the negative consequences of problem gambling to individuals, their families and the community, through a national approach. The Commission endorses this initiative.

There is comment in this report on the impact of the Tasmanian Government's introduction of smoking bans in casino, hotel and club gaming areas. As noted, turnover from gaming machines has dropped by about 10 per cent and continues to remain at that lower level.

In closing, I wish to thank on behalf of my fellow Commissioners the dedicated support provided by Peter Coe, Executive Director, Revenue, Gaming and Licensing Division; Bert Elson, Director, Liquor and Gaming Branch; Sarah FitzGerald, Assistant Director, Liquor and Gaming Branch; and the team of the Liquor and Gaming Branch who provide the Commission with impartial administrative and technical support.

I commend this report to Parliament and to the Tasmanian community.

C A Eastaugh
Chairman

INTRODUCTION

The Tasmanian Gaming Commission (the Commission) is an independent body responsible for the regulation of gaming in Tasmania, established under the *Gaming Control Act 1993*.

The Commission is a three-person body whose members are:

- Mr Clyde Eastaugh - Chairman
- Professor Kate Warner
- Ms Elizabeth Thomas

Mr Eastaugh has been a member of the Commission since its inception in September 1994 and was appointed as Chairman in November 2003. Professor Warner has been a member of the Commission since June 2001 and Ms Thomas was appointed as a member of the Commission in July 2004.

Generally, the Commission meets on a monthly basis. Special meetings are also held as required.

In 2004-05, the Commission met formally on thirteen occasions. Mr Eastaugh, Professor Warner and Ms Thomas attended all of the Commission meetings.

FUNCTIONS OF THE COMMISSION

The functions of the Commission are prescribed under section 125 of the *Gaming Control Act 1993*.

The functions of the Commission are to:

- Regulate and control gaming to ensure that it is conducted honestly and free from criminal influence and exploitation. This encompasses gaming in casinos (including the Spirit of Tasmania vessels), hotels and clubs, and extends to minor gaming activities and interactive gaming and wagering.
- Approve internal control, administrative and accounting procedures, rules and conditions in relation to gaming activities, and to determine disciplinary matters.
- Investigate and make recommendations to the Minister on gaming regulatory matters.
- Research and investigate matters relating to gaming, including the probity and financial stability of persons involved in the conduct of gaming operations. Those persons include applicants for special employee, technician, licensed premises gaming and Tasmanian gaming licences and applicants seeking listing on the Roll of Recognised Manufacturers and Suppliers of Gaming Equipment.
- Liaise with other authorities and persons responsible for the regulation and control of the conduct of gaming.
- Oversee the administration of the CSL and make recommendations to the Minister for Finance and the Treasurer on the allocation of funds from the CSL to appropriate projects and services.
- Investigate and resolve complaints relating to the conduct of gaming.
- Perform such other functions as required by the *Gaming Control Act 1993* and *TT-Line Gaming Act 1993*.

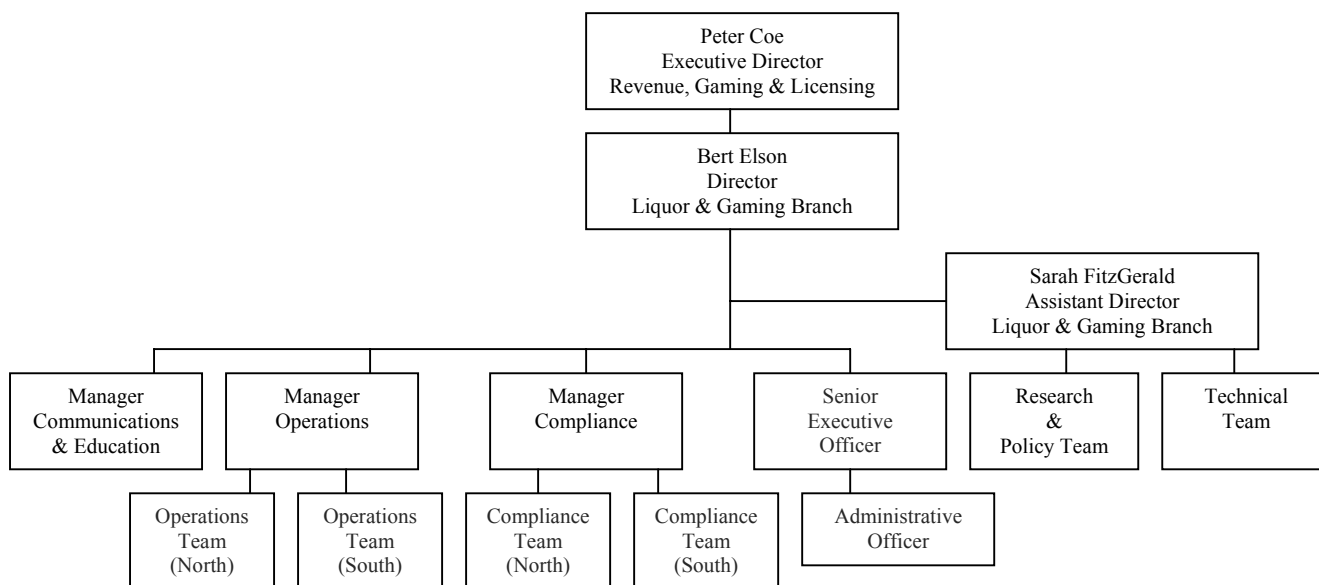
SUPPORT TO THE COMMISSION

The Commission is supported by staff of the Liquor and Gaming Branch in undertaking its day-to-day activities. The Branch is located within the Revenue, Gaming and Licensing Division of the Department of Treasury and Finance.

The Liquor and Gaming Branch has offices in Hobart and Launceston, and maintains an inspectorate presence at Wrest Point Hotel Casino and Country Club Casino. The inspectorates oversee gaming operations at the casinos and undertake compliance inspections at hotels and clubs and onboard the *Spirit of Tasmania* vessels.

The Branch is responsible for coordinating and preparing monthly Commission papers. The Executive Director, Revenue, Gaming and Licensing; Director, Liquor and Gaming; Assistant Director, Liquor and Gaming and the Senior Executive Officer provide administrative advice and support at Commission meetings. Figure 1 details the administrative support provided to the Commission.

Figure 1
Administrative Support to the Tasmanian Gaming Commission



Participation in Working Groups and Other Forums

Officers of the Liquor and Gaming Branch represent the Commission in a number of forums and on several inter-jurisdictional working groups. These include:

- The Gambling Industry Group (GIG): GIG is the peak industry representative body, comprising representatives of Tattersalls, the Federal Group, Admirals Casino, TOTE Tasmania, the Australian Hotels Association and Registered Clubs Tasmania. Representatives of the Commission and the Gambling Support Bureau attend GIG meetings as observers and provide advisory services to its members.

- The Tasmanian Gambling Consultative Group (TGCG): The TGCG brings together all relevant State interests in gambling and its community impact. These interests include all gambling industry codes, relevant government bodies, relevant community sector organisations and interested consumer organisations. The aim of the TGCG is to encourage its represented membership to discuss and share information on current issues relating to the impact of gambling on the wider community within Tasmania. The Commission believes this is an important group for mutual discussion.
- The Casino and Gaming Chief Executive Officers Forum (CEOs Forum): The key forum for discussion of inter-jurisdictional gaming regulatory matters. The CEOs Forum is generally held bi-annually, with the key meeting held prior to the annual Gaming Regulators' Conference. The Executive Director, Revenue, Gaming and Licensing Division and the Director, Liquor and Gaming Branch represent the Commission on the Forum.
- Responsible Regulators' Gambling Working Party (RRGWP): Support to the Gaming CEOs is provided by the RRGWP. The purpose of the RRGWP is to provide advice on regulatory responses on responsible gambling issues for consideration by Gaming CEOs. The RRGWP is comprised of senior gaming officers of each member jurisdiction.

LEGISLATIVE FRAMEWORK

Gaming Control Act 1993

The *Gaming Control Act 1993* (the Act) provides the legislative framework for the licensing and regulation of gaming in the State. Gaming activities covered by the Act include state-wide gaming machine and keno gaming, casino gaming, interactive gaming and wagering and minor gaming.

A Deed of Agreement between the Crown and Federal Hotels Pty Ltd, which grants exclusive rights to Federal Hotels to conduct casino operations and operate keno and gaming machines in Tasmania, is set out in Schedule 1 of the Act.

TT-Line Gaming Act 1993

The gaming operations on board the *Spirit of Tasmania* vessels are controlled by the *TT-Line Gaming Act 1993*. Reciprocal Victorian legislation regulates gaming aboard the two vessels whilst the vessels operate in Victorian waters. The Commission is responsible for the licensing and regulation of gaming on those vessels. The licence to conduct gaming operations is held by the TT-Line Company Pty Ltd. Admirals Casino Pty Ltd holds the franchise for the management of gaming on board the vessels. Gaming activity aboard the two vessels is presently limited to gaming machines.

MAJOR ACTIVITIES AND GAMING DEVELOPMENTS IN 2004-05

Review of the Role of the Commission

In late 2004 the Commission determined to put into place a strategic planning process including a review of its role, functions, activities and priorities. An independently facilitated all-day planning session was held on 25 June 2005. A number of changes in the operating environment of the Commission were identified and when completed, the strategic plan for the Commission will clarify its current role and future direction.

Harm Minimisation Initiatives

The Commission, along with the gambling and hospitality industry and the Gambling Support Bureau in the Health portfolio, are involved in various harm minimisation initiatives aimed at protecting gamblers and the wider community from any adverse consequences of gambling.

The Government is participating in the development of a National Framework on Problem Gambling, which will oversee development of strategies across four key focus areas:

- Public awareness, education and training – to promote a greater understanding of the nature of the gambling product, the potential for harm and the availability of help and support.
- Responsible gambling environments - to minimise the likelihood of recreational gamblers developing problem gambling behaviours.
- Intervention, counselling and support services – to enhance problem gambling support and treatment services that are effective, accessible and culturally appropriate.
- National research, data collection and evaluation – to inform the implementation and further development of the national framework and its strategies.

A number of state-wide initiatives are already in place to promote effective harm minimisation in the Tasmanian gaming environment. Examples include:

- compulsory gaming industry staff training in responsible service of gambling;
- strict controls prohibiting the entry of minors to gaming areas;
- a bet limit of \$10 applied to gaming machines in clubs and hotels;
- a ban on note acceptors in gaming machines in hotels and clubs;
- a blanket ban on gaming using credit, including credit cards;

- a ban on automatic teller machines (ATMs) in hotels and clubs with gaming facilities;
- restrictions on the use of EFTPOS and the cashing of cheques in hotels and clubs with gaming facilities;
- a ban on EFTPOS and ATMs in all casino gaming areas;
- the cap of 2 500 gaming machines allowed in hotels and clubs;
- a total cap of 3 680 gaming machines allowed to operate in the State; and
- caps of 30 and 40 machines in any one hotel or club respectively.

The Tasmanian Gambling Exclusion Scheme – a joint activity with industry, the Liquor and Gaming Branch and the Break Even gambling support service, allows for those having difficulty with gambling to bar themselves from gambling venues effectively.

The Gambling Helpline Tasmania, other gambling counselling services and responsible gaming generally is promoted in all venues and across the community.

Assessment of New Games and Jackpot Systems

During the year, the Commission continued to scrutinise applications for new gaming machine games, equipment and jackpot systems.

The Commission has now mandated Player Information Displays (PIDs) on any new casino gaming machine games. PIDs enable a player to:

- view the return to player configuration of that game and any connected jackpots;
- monitor a session to record the duration of play as well as total wins and losses; and
- view the odds of the top five and bottom five prizes available in that game.

As new games are approved this functionality will become more widely available in gaming machines operating in Tasmanian casinos.

In addition a number of new stand-alone progressive jackpots systems were approved for use in hotels and clubs.

Australian Gambling Statistics

After being produced in Tasmania for many years, the 2005 edition of the Australian Gambling Statistics was published by the Queensland Office of Economic and Statistical Research (OESR).

The task of producing the Australian Gambling Statistics was one carried out by the Commission as a service on behalf of all jurisdictions. The transfer to Queensland was first considered in 2003 to allow Liquor and Gaming Branch resources to be better directed. The transfer took place during late 2004 and the successful release of

the 2005 edition by the OESR marked the conclusion of the Commission's involvement in the publication.

Public Accounts Committee

The Parliamentary Standing Committee of Public Accounts (the Committee) announced an inquiry into the administration of the CSL in late 2004 and sought submissions from interested parties. The Commission made a submission to the Committee and during April 2005 the Chairman and the Director, Liquor and Gaming Branch were invited to make a presentation and answer questions from Committee members.

Terms of reference of the inquiry included reporting on:

- reasons for the level of unexpended funds;
- the distribution process;
- the suitability of the Commission (or the appropriateness of an alternative model) to oversee and administer the distribution of funds;
- the administration costs;
- the legislative requirements; and
- any other relevant issues.

The Committee's report is expected to be released early in the 2005-06 financial year.

Gaming and Liquor Information System

Work was commenced during 2004-05 on a major system development, the Gaming and Liquor Information System (GLIS). The objectives of the project are to develop a single licensing and compliance system for both liquor and gaming. This will replace the ageing system currently used for liquor licensing and will provide a platform to enable sufficient development flexibility to accommodate the Liquor and Gaming Branch's data processing requirements for coming years.

System specification occurred in late 2004, system design in early 2005 and development was underway by the end of the financial year. The system is due for completion in late 2005.

Impact of New Smoking Restrictions on Gaming Activity

The Tasmanian Government introduced smoking bans in casino, hotel and club gaming areas, nightclubs and 50 per cent of most outdoor dining areas from 1 January 2005. It has now been six months since the Government's smoking bans applying to gaming areas came into force.

Between the introduction of the new smoking restrictions in January and the end of the financial year in June, overall turnover for gaming machines dropped by almost ten per cent across the board, compared with the same six-month period last year.

Over the same period, player expenditure has reduced by over nine per cent compared to the previous year. The decline in gaming machine expenditure in hotels and clubs will have an ongoing impact on the level of CSL that accrues, as the CSL is calculated as a percentage of gross profit in hotels and clubs.

The Commission is supportive of the Government's policy intent as a public health initiative, although the Commission has been wary of promoting smoking bans as a gambling harm minimisation measure, as any linkages between smoking and excessive gambling are not well documented and may prove to be tenuous.

The Commission will continue to closely monitor impacts on gambling behaviour when the Government's complete prohibition on smoking in licensed premises becomes effective on 1 January 2006.

Risk Based Compliance Project

A project was commenced during 2004-05 to develop a risk-based approach to the compliance activities carried out by the Liquor and Gaming Branch for the Commission.

The intent of the project is to move the Branch from what has historically been an over-sight role in gaming to one where the focus of Branch compliance is on the areas of greatest risk. This move will ensure that Branch personnel are utilised most effectively and will also provide opportunities for industry to enhance their role in the area.

This is a significant project for the Branch and initially it is being progressed in three phases. The first phase commenced during the year and involved the completion of a risk analysis of external gaming, casinos and liquor activities. The second and third phases will focus on minor gaming and technical compliance respectively and will be progressed during 2005-06.

Once this initial project is completed, the risk-based approach to compliance activities will be ongoing.

GAMING IN TASMANIA

Casino Operations

Wrest Point Hotel Casino and Country Club Casino

The Deed of Agreement between the Crown and Federal Hotels Pty Ltd provides exclusive rights for the Federal Group to operate table gaming, gaming machines and keno throughout the State until 30 June 2018.

Australian National Hotels Pty Ltd holds the casino licence for Wrest Point Hotel Casino and Tasmanian Country Club Casino Pty Ltd holds the casino licence for Country Club Casino.

The Wrest Point and Country Club casinos offer Baccarat, Blackjack, Pontoon, Roulette, Caribbean Stud Poker, Five Card Stud Poker, Money Wheel and Sic Bo. The simulated racing game (Trackside) is no longer offered at either casino. The State-wide TasKeno game is also available within the casinos.

Gaming machine numbers increased by 77 at Wrest Point Hotel Casino, with 745 machines in operation as at 30 June 2005. At Country Club Casino, gaming machine numbers increased by 40, with 532 machines in operation as at 30 June 2005.

As a result of the changes to smoking legislation, during the period December 2004 through to February 2005, building works took place at both casinos to modify the gaming areas. Extensive refurbishment occurred at the same time.

The Commission maintains a presence in each casino via the Southern and Northern Government Inspectorates. Inspectors are usually on site during normal business hours and when casino table gaming is operating.

Licensing of Casino Staff

Staff employed at Wrest Point Hotel Casino, Country Club Casino and Admirals Casino as Casino Operatives, Casino Management or Casino Security must be licensed before undertaking gaming duties. The total number of persons licensed to perform gaming duties at these casinos was 553 as at 30 June 2005.

Admirals Casino Pty Ltd

TT-Line Company Pty Ltd (TT-Line) operates two ships *Spirit Of Tasmania I* and *II* on the Bass Strait crossing between Devonport and Melbourne. The gaming operations on board the *Spirit Of Tasmania* vessels are controlled by the *TT-Line Gaming Act 1993*. The Commission is responsible for the licensing and regulation of gaming on those vessels. The licence to conduct gaming operations is held by the TT-Line Company Pty Ltd (TT-Line). TT-Line has a contractual arrangement with Admirals Casino Pty Ltd for the management of gaming on the vessels.

There are 23 gaming machines on board each vessel and gaming machines are the only form of gaming currently offered by the operator.

The tax rate that applied to Admirals Casino during 2004-05 was 17.91 per cent of gross profit for gaming machines. There is no annual licence fee.

During the year, the Government Inspectorate conducted 37 inspections of the gaming rooms aboard the two vessels.

The *Spirit of Tasmania III* on its crossings between Devonport and Sydney does not offer gaming services.

Gaming in Hotels and Clubs

The 2004-05 period saw little change in the overall numbers of gaming machines throughout the State. The cap on the total number of gaming machines set in 2003 remains in place. The cap was set at 3 680 machines State-wide and at 30 June 2005 there were a total of 3566 machines in operation throughout the State, including the two casinos. The maximum number of gaming machines permitted in all hotels and clubs is 2 500. Clubs are limited to a total of 40 gaming machines, and hotels are only permitted to operate a total of 30 gaming machines.

During 2004-05, 22 applications for licensed premises gaming licences for the operation of gaming machines were assessed. Of the 22 applications, ten related to a change of operator at an existing gaming venue and three related to new keno venues. One hotel relinquished its gaming machines during the period and another surrendered its gaming licence after the premises was destroyed by fire.

The total number of electronic gaming machines in hotels and clubs increased by two from 2 287 to 2 289 in the year to 30 June 2005. Table 1 lists changes in the number of venues and gaming machines by type of venue for the period:

Table 1
Electronic Gaming Machines

	Hotels		Clubs		Total	
	No of venues	No of machines	No of venues	No of machines	No of venues	No of machines
30 June 2004	95	2 114	10	173	105	2 287
30 June 2005	94	2 116	10	173	104	2 289

It is a statutory requirement that gaming machines return, on average, a minimum of 85 per cent of turnover to players.

Hotel and club operators lease machines and keno equipment from the gaming operator (Network Gaming), which also provides training and marketing services to the venues, and coordinates machine and equipment maintenance by Getronics.

As part of the 2003 Deed of Agreement, Federal Hotels agreed to introduce a flexible operating model that would permit a Licensed Premises Gaming Operator of a club or a hotel to choose the games and gaming machines from a selection considered appropriate by the Gaming Operator. The model was implemented this year and has been endorsed by the Commission.

After extensive research and consultation, the Commission determined in May 2005 that all hotels and clubs are to introduce a recorded surveillance system for gaming purposes by 1 July 2006. This obligation will rescind the previous requirement for

gaming premises to conduct physical surveillance of restricted gaming areas. The Commission has approved three categories of surveillance systems that include: digital, multiplexer, and quad splitter systems. By requiring the introduction of recorded surveillance Tasmania has become the first State or Territory to set standards on surveillance in restricted gaming areas of hotels and clubs.

Taxation on gaming machines is calculated on gross profit, that is, turnover less winnings paid. The tax rates are based on a sliding scale from 20.88 per cent upon the first \$35 million of gross profit and 25.88 percent upon the rest of the gross profit. The applicable percentage is based on the combined gross profit from all gaming machines in hotels, clubs and casinos (excluding Admirals Casino Pty Ltd).

Operation of Keno in Hotels and Clubs

Keno has been operating state-wide since 1 December 1994. During the year three new venues commenced operating keno. However, the total number of venues operating keno remains at 153 due to the removal of some keno gaming premises throughout this year. The total number of gaming premises that operate both keno and gaming machines is 104, one less premises than 2003-04.

In line with the Commission decision of May 2005, keno-only gaming premises will also be required to install recorded surveillance by 1 July 2006. As with gaming machine premises, keno only premises will have an option of installing one of three categories of recorded surveillance.

Keno is taxed at the rate of 5.88 per cent of gross profit.

Licensing of Special Employees and Technicians

During 2004-05, 745 special employee and 33 technician licence applications were received (including licence renewal applications) with 613 of these relating to keno and gaming machine operations in hotels and clubs. Of the licence applications received, three were refused as a consequence of probity and integrity concerns, 28 were not considered due to incompleteness and two were withdrawn. In all, a total of 746 licences were issued.

During 2004-05, 383 licences were cancelled, surrendered or not renewed. Of these, 325 were hotel and club special employee licence holders, the majority of whom did not renew their licence upon expiry.

The number of special employees licensed to operate keno and gaming machines in hotels and clubs increased from 2 581 to 2 595 in the year to 30 June 2005.

Persons who are employed either by the casinos or manufacturers to install, maintain or repair gaming equipment must be licensed as a technician. The number of licensed technicians decreased from 175 as at 30 June 2004 to 171 as at 30 June 2005.

Responsible Service of Gaming Courses

It is a condition of every special employee licence that the licensee must undertake a Responsible Service of Gaming course approved by the Commission within three months of being licensed. The Commission suspended the licences of 83 special employees for failing to comply with this condition during 2004-05.

The Commission has approved the Australian Hotels Association (AHA) and the Institute of TAFE Tasmania as recognised providers of the Responsible Service of Gaming course in Tasmania. The AHA conducts Responsible Service of Gaming training courses on a regular basis throughout the State. The Institute of TAFE Tasmania offers the option of undertaking Responsible Service of Gaming training as a single module or as a component of its hospitality training certificates. It is the intention of the Commission to review the provision of these services being provided by Registered Training Organisations.

Tasmanian Gaming Licence Operations

In late 1999, the Act was amended to provide for the issue of a Tasmanian Gaming Licence. A Tasmanian Gaming Licence provides for the operation, from premises in Tasmania, of Internet gaming and wagering activities.

A Tasmanian Gaming Licence (TGL) can be endorsed with one or more endorsements, which will allow for the conduct of the following:

- simulated gaming (Internet casinos);
- fixed odds wagering (horses and greyhounds, where wagers are taken over the Internet or telephone);
- sports betting (sports bet wagering over the internet or telephone); and
- major lotteries.

The Minister responsible for Gaming is also able to prescribe a new endorsement should any new gaming or wagering activity not fall under any of the above categories.

TABCORP Online Pty Ltd and PBL Gaming Management Pty Ltd held Tasmanian gaming licences that expired in May 2005. Both entities have sought to renew their licences for another five-year period.

Despite continued enquiries, no new Tasmanian gaming licence applications were received in the twelve months to 30 June 2005.

Minor Gaming

Minor gaming is regulated in accordance with the provisions contained in Part 4B of the Act. The term “minor gaming” is used to refer to a number of games including bingo, raffles, lucky envelopes, Calcutta sweepstakes, dancing dollars and Tassie’s best punter that have been authorised by the Commission.

The Act requires that the proceeds of conducting minor gaming must be used for the lawful purpose of a not-for-profit organisation or for a charitable reason, and not for the private gain or benefit of any person, except by way of charity. Charitable purposes include education, welfare, sport and recreation.

Under the Act, a permit must be obtained in order to undertake minor gaming activities and these are valid for 12 months. During that period, permit holders are also required to notify the Commission of their intention to conduct games. Permits

are not required for the following activities declared exempt under section 3(8A) of the Act:

- tipping competitions concerning the outcome or occurrence of a sporting event – where a participant does not contribute more than \$150, and total contributions do not exceed \$10 000 and are distributed to winners;
- raffles - where the total prize value does not exceed \$500;
- sweepstakes – where a participant does not contribute more than \$260, and total contributions do not exceed \$10 000 and are distributed to winners; and
- Anzac Day Two-up – where the game known as “Anzac Day Two-up” is played during the period commencing at 0600 hours and ending at 1800 hours on the 25th of April in any year, and the premises upon which the game is conducted is occupied on a permanent basis by an organization, the majority of the members of which, are former members of the defence forces.

During 2004-05, the Commission issued 674 permits to conduct minor gaming. Table 2 lists the number of permit holders that notified their intention to conduct games during that period.

Table 2
Minor Gaming Permits

Game	Number of Individual Activity Notifications
Raffles	250
Bingo	60
Lucky envelopes	87
Calcutta's	62
Gratuitous gaming	26

Tax rates for minor gaming were abolished from 30 June 2004.

Further information on minor gaming, including permit applications, can be accessed via the Commission's website at www.gaming.tas.gov.au.

COMMUNITY SUPPORT LEVY

The Act requires that a percentage of the gross profit derived from gaming machines in hotels and clubs is paid into the CSL under the control of the Treasurer. (that is, 4 per cent of the gross profit from gaming machines operated in hotels and clubs respectively).

Under the Act, the Treasurer must distribute the CSL in the following manner:

- 25 per cent for the benefit of sport and recreation clubs;
- 25 per cent for the benefit of charitable organisations; and
- 50 per cent for the provision of -
 - research into gambling,
 - services for the prevention of compulsive gambling,
 - treatment for the rehabilitation of compulsive gamblers,
 - community education concerning gambling, and
 - other health services.

The CSL commenced on 1 January 1997. In 2004-05, \$5 028 544 was paid into the CSL from the profits of gaming machines in clubs and hotels and was accumulated for distribution in the proportions specified above.

The Commission is responsible for making recommendations to the Treasurer (via the Minister for Finance) on the allocation of funds from the CSL to appropriate projects and services.

The Department of Health and Human Services (DHHS) has administrative responsibility for making recommendations to the Minister for Health and Human Services for expenditure against the 50 per cent component of the CSL and the 25 per cent of the CSL for the benefit of charitable organisations.

The Gambling Support Bureau is located within the DHHS. The Bureau is responsible for policy development and program management in relation to State-wide problem gambling support service delivery, the gambling research program, gambling community education and health promotion, and the Charitable Organisations grants programs. The Gambling Support Bureau is funded through the CSL.

In May 2003, the Treasurer approved funding of approximately \$3.4 million from the CSL over a three year period to fund a new social program to enhance the provision of support services in high need Tasmanian communities. The program comprises a number of initiatives to expand the support services available to the community in Tasmania.

Problem Gambling Category

In 2004-05, \$3 070 275 was expended on the provision of services to assist persons affected by problem gambling. This amount was disbursed as follows:

- \$702 262 was spent on the provision of support services to assist people affected by gambling. This included personal and family counselling, financial counselling, support groups and the 24 hour telephone helpline.
- \$176 433 was spent on gambling community education and harm minimisation for a range of activities. This included the distribution of responsible gambling material to the health and community sector, along with specific communication to Tasmanian general practitioners on gambling issues and attendance at Agfest to promote responsible gambling and the Break Even gambling support services. The services were also promoted in a number of publications and via shopping docketts. The DHHS website was developed with problem gambling self-help material, including reference to arranging self-exclusion.
- \$43 606 was spent on a number of research activities, including the evaluation of the current Break Even gambling support services and funding a study by the University of Tasmania.
- \$124 474 was spent on The Tasmanian Health and Wellbeing Fund (THWBF) Program. The Program seeks to address the wider impact of gambling on services within the community through the expenditure of grants under the 'other health services category'.
- \$784 500 was spent on the Neighbourhood Houses Program which comprises a number of initiatives to expand the support services available to the community in Tasmania. One of the initiatives is the establishment of two new neighbourhood houses situated at East Devonport and New Norfolk.
- \$1 039 000 was spent on a new Social Program which comprises a number of initiatives to expand the support services available to the community in Tasmania. Included in these initiatives were programs dealing with mental health promotion and prevention strategy, education and prevention services with a focus on raising awareness of domestic violence and the Our Kids project, which aims to develop an in-home safety community education program and pilot models for the provision of parent support networks at the local level to parents, particularly teenage mothers and their children.
- \$200 000 was spent on an education program on the introduction of the smoke free area legislation.

Charitable Organisations Category

An amount of \$515 439 was paid to charitable organisations, through the Community Support Levy Charitable Organisations Grants Program (CSLCOGP) and the Small Grants Program under the CSLCOGP.

In 2004-05, grants totalling \$449 994 (ranging from \$2 270 to the current maximum of \$30 000) were awarded to 33 charitable entities under the CSLCOGP. A list of grant recipients is provided in Appendix 1.

In June 2005, the Treasurer approved funding of \$102 000 per annum for Lifeline for three years.

Sport and Recreation Category

Sport and Recreation Tasmania, which is located within the Department of Economic Development, has the responsibility for making recommendations to the Commission for expenditure against the 25 per cent of the levy for the benefit of sporting organisations. In 2004-05, over \$1.7 million was expended by way of grants to sport and recreation organisations and for facility development. A list of grant recipients is provided in Appendix 1.

EQUIPMENT AND MANUFACTURERS

In order to sell or supply gaming equipment to hotels, clubs and casinos in Tasmania, the Act requires manufacturers and suppliers to be listed on the Roll of Recognised Manufacturers and Suppliers of Gaming Equipment (the Roll). Only those on the Roll can sell or supply gaming equipment in Tasmania.

The Commission approved SEP SPrint P/L, Paltronics Australia P/L and VIP Gaming Solutions P/L for listing on the Roll in the year to 30 June 2005. Currently, there are 32 entities listed on the Roll.

GAMING INSPECTION

The Government Inspectorate comprises Senior Compliance Officers, Gaming Inspectors and Gaming Compliance Officers who undertake duties relating to Liquor Licensing and Gaming compliance. Both the Northern and Southern Inspectorates maintain an office at each casino and are responsible for ensuring that casino gaming, state-wide machine gaming, keno gaming and minor gaming are conducted in accordance with the legislation and rules of the games. The Inspectorate conducts regular inspections of gaming activities at hotels and clubs, on the *Spirit of Tasmania* vessels and minor gaming activities.

To ensure that inspectorate activity is conducted in the most efficient and effective manner, procedures and practices are under continuous improvement using risk management and quality assurance methodologies.

As an alternative to taking disciplinary action against a venue, section 78(1) of the Act *allows* the Commission to direct a licence holder in writing to rectify the matter of concern.

Table 3 lists the number of rectification orders issued by the Commission against a licensed operator or a licensed premises gaming operator:

Table 3
Rectification Orders

Rectification Orders Issued By The Gaming Inspectorate *		
	Hotels	Clubs
2000-01	62	6
2001-02	48	7
2002-03	43	5
2003-04*	6	2
2004-05*	13	0

* The use of rectification orders was curtailed during the year, pending amendments to the Act.

BREACHES OF THE LEGISLATION

The Act gives the Commission power to take disciplinary action against licence holders. Disciplinary action may include the cancellation or suspension of a licence or gaming endorsement, the issue of a letter of censure, the amendment or imposition of conditions on a licence or the imposition of a fine. A fine not exceeding \$1 000 000 may be imposed on a casino or gaming operator and for the operator of a hotel or club, a fine not exceeding \$5 000 may be imposed.

The Commission takes a serious view of any breach of the legislation or licence conditions. Each case is considered on its merits. In imposing a penalty, the Commission takes into account issues including the seriousness of the breach and the past record of compliance by the licensee.

Licensed Venues

Table 4 lists the disciplinary action taken by the Commission against licensed premises gaming licence holders during 2004-05.

Table 4
Disciplinary Action Against Licensed Venues

Licence Holder	Venue	Section of Act	Date of Breach	Outcome
George Town R & SLA Club Inc.	George Town RSLA Club	92(2)	14-May-04	Letter of Censure
DE & VD Pendlebury	Moonah Café Bar & Bistro	112S(1)(c) & 112S(1)(g)	9-Aug-04	Cancel licence
Forbes Mitchell Appleby	Lewisham Tavern	50(2) (a) & (b)	19-Aug-04	Fine \$500
Forbes Mitchell Appleby	Lewisham Tavern	112S(1)(c)	11-Oct-04	Letter of Censure
Australian National Hotels Pty Limited	Wrest Point	137(4)	9-Nov-04	Letter of Censure
Federal Holdings Tasmania Pty Ltd	Hamers Hotel	50(2)(a) 112S(1)(c)	6 & 16-Dec-04 & 10 Jan 05	Fine \$1000
AR Hayes & BW Kelly	Nelson's Tavern	50(2)(a)	7-Jan-05	Fine \$500
Sheffield RSL & Citizens Club Inc	Sheffield RSL	112S(1)(c)	1-Mar-05	\$1000 fine, conditions imposed.
Forbes Mitchell Appleby	Lewisham Tavern	A2.2.1	11-Mar-05	Fine \$1000
Hanobey Pty Ltd	Snug Tavern	50(2)	23-Mar-05	Fine \$1000

Special Employees

Table 5 lists the disciplinary action taken by the Commission against special employee's licence holders during 2004-05.

Table 5
Disciplinary Action Against Special Employees

Licence Holder	Section of Act	Date of Breach	Outcome
Luke Emmerton	112U(b)	26-May-04	Suspended Licence
David Edward Pendlebury	112S(1)(d) & 112S(1)(g)	01-Jul-04	Cancel Licence
Dannieka Jayde Marshall	56(3) & 2.7.1 of licence condition	6-Jul-04	Cancel licence
Jenny Lee Dobson	112S(1)(g) & 112S(1)(d)	26-Jul-04	Cancel Licence
David Lee Parr	112S(1)(g)	6-Sep-04	Cancel Licence
Sam Berechree	91 & 10.5 TGC rules, & 7.1 Keno rules	9-Oct-04	Suspended Licence & conditions imposed
Casimir Michael Douglas	112U(b)	6-Dec-04	Suspended Licence
Jeremy Karl Lawless	112U(b)	6-Dec-04	Suspended Licence
Matthew Jon Dunne	112S(1)(c) & 56(1)	7-Jan -05	Cancel Licence
Jeremy Karl Lawless	50(1)	13-Jan-05	Cancel Licence
Gary Davidson McLean	112S(1)(a) 112S(1)(d)	24-Feb-05	Cancel Licence
Nigel Paul Tyrrell	112S(e) & 112U(b)	11-Mar-05	Suspended Licence
Grant Edward Watson	112S(1)(a) & 112S(1)(e)	2-May-05	Cancel Licence
Ian Maxwell Wilson	112U(b)	25-May-05	Suspended Licence

Technicians

There were no instances of disciplinary action taken by the Commission against licensed technicians during 2004-05.

APPENDIX 1 - COMMUNITY SUPPORT LEVY GRANT RECIPIENTS 2004 – 05

The following grant program is funded from the CSL and is managed through the Gambling Support Bureau in DHHS.

It should be noted that, while the following projects were approved in 2004-05, not all of the funding was expended in the financial year.

Charitable Organisations Grant Program

Organisation	Project Title	Amount
Australian Volunteer Coast Guard Association - Tasmania Squadron	Implementation of competency based training for volunteers	\$5 000.00
Bellerive Community Arts Centre	Moving On – skills development through a workshop based program	\$9 800.00
Brain Injury Association of Tasmania Inc	Acquired brain injury information (ABI) project	\$9 944.00
Bridgewater High School Farm Management Group Incorporated	Shearing shed renovation	\$27 044.60
Bridgewater Police & citizens Youth Club	Bridgewater & Gagebrook: Active Communities for young people to access	\$21 590.00
Bruny Island Community Association Inc	Lap Top Computer - Bruny News	\$2 270.00
CanTeen - The Australian Organisation for Young People Living with Cancer	Peer support and leadership programs	\$5 000.00
Circular Head Rural Health Services Inc	Specialist counsellor training	\$8 100.00
Colony 47 Inc	Blokes 22+	\$12 500.00
Continuing Education & Training Organisation for the Huon Inc	Friendly Faces – support in continuing into further education and employment for the young indigenous people.	\$16 400.00
Derwent Valley Youth Future Action Team (D'Fat)	Ellis Dean Reserve Playground - establishment of a socially acceptable children's playground	\$5 000.00
Diabetes Australia - Tasmania	Getaway for teenagers	\$8 075.00
Epilepsy Association of Tasmania Inc	General information kit for adults with epilepsy	\$17 490.00

Organisation	Project Title	Amount
Geeveston Community Centre Inc	GOSH healthy eating program	\$5 000.00
Jordan River Services Inc Gagebrook Community Centre	What's For Dinner? – providing basic cooking classes	\$5 000.00
Kickstart Arts Inc	Creative Being: Love – No Pretty Thing – develop and produce a CD	\$29 064.20
Langford Support Services Inc	Respite support for school age children with disabilities	\$29 506.95
Lauderdale Playgroup and Child Health Association Inc	Rubberised safety surface play area	\$5 000.00
Launceston Safer Community Partnership (LSCP)	Partysafe, providing safer partying practices information	\$28 930.00
Medea Park Association Inc	Medea park community care bus	\$5 000.00
Multicultural Council of Tasmania Inc (McoT)	Power and powerlessness: matters affecting migrants and refugees in aged care	\$17 380.00
Oakdale Services Tasmania	Diversional therapy equipment & recreation equipment	\$5 500.00
Project Hahn Inc	Indigenous cultural development for Aboriginal community members	\$13 200.00
Quit Tasmania	Quitline guidelines, smoking and mental illness	\$30 000.00
Rosny Seventh Day Adventist Church	Moving Up – support for those who are reliant upon food handouts	\$9 988.00
Rotary Club of Sorell	Safe Passage	\$15 700.00
SAAS Sexual Assault Support Service Inc	Drink Spiking – posters and coasters awareness campaign	\$29 524.52
SCCAR Inc – Survivors Confronting Child Abuse & Rape	Breaking the bonds of child abuse	\$10 000.00
South Launceston Auxiliary for 4K	Enhancing a childhood and young persons experience while hospitalised	\$5 000.00
St Michaels Association Inc	Jobskills enterprise workshop	\$5 990.00
Tasmanian Regional Arts	artAbility – use my ability not my disability	\$12 000.00
Tasmanian Youth Broadcasters Inc T/A Edge Radio 99.3fm	Program development project	\$29 997.00

Organisation	Project Title	Amount
The Salvation Army Tasmania Property Trust	Resettlement package for disadvantaged families	\$10 000.00
TOTAL		\$449 994.27

The following grant programs are funded from the CSL and are managed through Sport and Recreation Tasmania in the Department of Economic Development.

It should be noted that, while the projects were approved in 2004-05, not all of the funding was expended in the financial year.

Community Sport and Recreation Tasmania Program

Organisation	Project Title	Amount
AUSSI Masters Swimming in Australia - Tasmania	Conduct training seminars	\$2 000
AUSSI Masters Swimming in Australia - Tasmania	Conduct the Tasmanian Masters Swimming Summer (Long Course) Club Championships	\$1 000
AUSSI Masters Swimming in Australia - Tasmania	Purchase inflatable marine marker buoys	\$ 630
Australopers Orienteering Club	Purchase an administration tent	\$1 370
Australopers Orienteering Club	Prepare a map of the East Risdon/Government Hills area for orienteering purposes	\$1 147
Bass & Equitable Budget Rent a Car Fun Run and Walk	Conduct the Community Fun Run event	\$1 000
Birralee District Pony Club	Purchase materials for cross country jumps and two-way radios	\$2 765
Birralee District Pony Club	Conduct a two day training workshop	\$ 750
Burnie 3 2 1 Go	Conduct the Burnie 3 2 1 Go event	\$5 000
Burnie Amateur Basketball Association	Conduct the Tasmanian under 18 Men's and Women's Basketball Championships	\$ 500
Burnie Clay Target Club	Purchase an automatic clay target trap	\$4 920
Burnie District Hockey Association	Purchase goalie and training equipment	\$ 882
Burnie Golf Club	Conduct a recruitment and skills development program	\$1 925

Organisation	Project Title	Amount
Burnie Golf Club	Purchase clubs, balls, tees, markers and hoops	\$ 632
Burnie Rugby Union Club	Implement a junior development program	\$2 000
Burnie Surf Lifesaving Club	Purchase three double surf skis	\$5 985
Burnie Ten	Conduct the Skilled Burnie Ten event	\$5 000
Canterbury Hockey Club	Purchase coach sports diaries, coaching videos, first aid markers, kit bags and balls	\$4 652
Canterbury Hockey Club	Implement a coach development program	\$1 885
City to Casino Fun Run	Conduct the City to Casino Fun Run event	\$4 400
Cressy Gun Club	Purchase a trapmaster	\$9 840
CyclingSouth	Implement a development program for teenagers and adults	\$5 000
CyclingSouth	Conduct Bike Week 2005	\$4 000
Derwent Cricket Club	Purchase balls, stumps, bails, thigh pads, bats and gloves	\$1 214
Devonport Clay Target Club	Purchase automatic clay target trap	\$4 000
Devonport Clay Target Club	Conduct the State Deauville Doubles Championship	\$ 300
Devonport Hockey Club	Purchase goal keeper protective attire	\$1 470
Devonport Junior Soccer Association	Purchase a portable aluminium goals	\$4 488
Devonport Little Athletics Centre	Purchase an electronic timing system	\$1 400
Devonport Surf Life Saving Club	Purchase one double and one single ski	\$3 181
Eastern Shore Croquet Club	Purchase an irrigation system	\$2 400
Emu Bay Indoor Bias Bowls Association	Purchase bowls and jacks	\$ 736
Esk Valley Orienteering Club	Conduct a club training camp	\$1 000
Esk Valley Orienteering Club	Purchase two GPS units	\$ 552
Esk Valley Orienteering Club	Conduct the Tasmanian State Orienteering Championships	\$1 000
Exeter Cricket Club	Purchase astroturf and cricket kits	\$ 444
Flinders Island Sports Club	Purchase a Scott Bonnar three phase mower	\$3 000
Flinders Island Sports Club	Purchase a smooth cut golf greens mower	\$2 975

Organisation	Project Title	Amount
Flinders Island Sports Club	Purchase three sets golf clubs and buggies	\$ 465
George Town Cycling Club	Purchase bicycle parts to assemble two new quality bicycles	\$1 128
Glamorgan Spring Bay Little Athletics Centre	Purchase a high jump mat	\$ 536
Glamorgan Spring Bay Little Athletics Centre	Purchase a line marker	\$ 342
Glenorchy District Football Club	Conduct a training and skills development program for high schools in the Glenorchy District	\$2 000
Glenorchy District Football Club	Conduct coaching clinics	\$1 000
Glenorchy District Junior Football Club	Purchase balls, markers, whistles and a hand pump	\$1 500
H Westbrook Memorial Committee	Conduct the 33rd H Westbrook Memorial Launceston to Hobart Cycling Race event	\$1 000
Hobart Athletic Club	Conduct the Bikes and Spikes event	\$5 000
Hobart Football Club	Purchase a stretcher with restraints	\$ 650
Hobart Islanders Inline Hockey Club	Purchase a scoreboard and hooter	\$2 100
Hobart Wheelers/Dirt Devils	Implement the 'Full Cycle' rider development program	\$3 200
Hobart Wheelers/Dirt Devils	Conduct the Mountain Bike Time Trial Series event	\$ 675
Hockey South	Implement a development program for grades three and four	\$5 000
Hockey South	Purchase nets, divider netting, sticks and balls	\$1 816
Huonville Amateur Swimming Club	Purchase four anti-wave lane ropes and one anti-wave storage reel	\$1 940
Inglis Pony Club	Purchase wings, poles, ropes and markers	\$1 940
Inglis Pony Club	Conduct the Pony Club Association of Tasmania State Dressage and Show Jumping Championships	\$ 988
Iron Pot Golf Club	Purchase tractor	\$7 000
Kettering Cricket Club	Purchase bats, gloves, batting pads, kit bags, helmets and balls	\$2 160
Kilburn Netball Club	Implement a coach development program	\$ 360
Kilburn Netball Club	Implement an umpire development program	\$ 150

Organisation	Project Title	Amount
Kilburn Netball Club	Implement a junior leadership program	\$ 75
Kilburn Netball Club	Purchase rule books, ball bags, pumps and skipping ropes	\$1 115
King Island Clay Target Association	Purchase a clay target trap	\$4 423
Kingborough Gymnastics Committee	Purchase matting	\$8 278
Kingborough Tigers Junior Football Club	Members to undertake a first aid training course	\$ 800
Kingborough Tigers Junior Football Club	Purchase a first aid stretcher	\$ 143
Kingborough Tigers Junior Football Club	Members to undertake a level 1 coach accreditation program	\$ 400
Kingborough Tigers Junior Football Club	Purchase two tackle bags and two hit shields	\$ 390
Latrobe Basketball Association	Members to undertake a first aid training course	\$1 420
Latrobe Basketball Association	Purchase first aid kits	\$ 250
Latrobe Bowls Club	Purchase a lawn mower	\$3 088
Launceston Junior Basketball League	Conduct the Tasmanian under 16 Boys and Girls Basketball Championships and the Tasmanian High Schools Basketball Championships	\$1 000
Launceston Touch Association	Conduct a touch football competition targeting ' <i>desk bound</i> ' employees	\$3 335
Launceston Touch Association	Purchase balls, a line marker and lawn mower	\$1 450
Lilydale District Pony Club	Upgrade trailer	\$1 254
Lindisfarne Rowing Club	Purchase outboard motor	\$1 371
Longford Bowls Club	Purchase 12 sets of lawn bowls, including bags	\$1 584
Malahide Golf Club	Implement training programs for beginners and advanced	\$ 500
Mersey Rowing Club	Purchase two rowing machines	\$2 552
Mersey Valley – Devonport Cycling Club	Purchase road racing event equipment	\$2 505
Mole Creek Swimming Centre Association	Purchase pool vacuum cleaner	\$3 400

Organisation	Project Title	Amount
New Horizons Club	Purchase of equipment for sporting programs	\$ 425
North East Axemen's Association	Purchase tandem trailer and frame to hold canopy	\$2 475
North East Axemen's Association	Conduct the 325 mm State Underhand Championship Woodchop	\$ 500
North Esk Rowing Club	Purchase two fully refurbished rowing shells	\$10 000
North Hobart Football Club	Implement a junior development program targeted at rural communities in southern Tasmania	\$3 000
North Hobart Football Club	Purchase a siren, horn re-fill, carry bags, drink bottles, markers, bottle carriers, pump and accessories, whistles and portable goal posts	\$1 000
North West Athletic Club	Purchase a digital wind gauge	\$2 350
North West Athletic Club	Purchase a javelin and discus trolley, shot puts, javelins and discus	\$ 735
North West Boardriders	Conduct the West Coast Classic event	\$1 000
North West Patrick Thunder Basketball Club	Implement a junior development program	\$5 000
North-Western Kart Club	Conduct the 2004 State Karting Titles	\$1 000
Northern Districts Cycling Club	Conduct a criterion series for schoolchildren	\$ 500
Northern Districts Cycling Club	Conduct the Tasmanian Schoolboys and Schoolgirls Annual Road Cycling Championships	\$ 500
Northern Junior Tennis Development Committee	Purchase scoreboards	\$1 625
Northern Junior Tennis Development Committee	Purchase balls	\$1 650
Northern Midlands Sporting Clays	Purchase a Rabbit Master Clay Target Trap	\$1 928
Northern Tasmania Eightball Association	Purchase two tables, balls, cues and rests	\$3 500
Northern Tasmanian Table Tennis Association	Purchase table tennis balls	\$ 391
Ocean Divers Plus	Purchase safety equipment	\$ 910
Ocean Divers Plus	Members to undertake a resuscitation and first aid training course	\$1 060

Organisation	Project Title	Amount
Penguin Bowls Club	Purchase a greens mower	\$3 100
Penguin Squash Racquets Association	Purchase racquets, balls and protective equipment	\$ 740
Penguin Surf Life Saving Club	Purchase rescue board, racing boards and foamie boards for training and competition	\$2 290
Peninsula Aquatic Club	Purchase PFDs, surf kayaks, spray skirts, paddles and helmets	\$2 646
Poatina Golf Club	Purchase a greens mower	\$10 000
Point to Pinnacle Recreation Walk & Run	Conduct the Point to Pinnacle Recreation Walk & Run event	\$5 000
Port Dalrymple Yacht Club	Purchase three new motors	\$7 500
Queenstown Amateur Swimming Club	Purchase four throw ropes and six junior and four small adult PFDs	\$ 538
Queenstown Amateur Swimming Club	Implement a swimming and water safety program for children aged five years and older	\$ 756
Queenstown Junior Hockey Association	Purchase playing and protective equipment, a first aid kit, timber railing and stabilisers for a field-of-play boundary	\$1 960
Rosebery Tennis Club	Purchase tennis balls	\$ 450
Sailability Tasmania	Purchase PFDs	\$2 520
Sandy Bay Bowls Club	Purchase a public address system	\$2 099
Sandy Bay Bowls Club	Purchase lawn bowls sets	\$2 875
Sandy Bay Sailing Club	Purchase an inflatable boat and motor	\$5 000
Sassafras Cricket Club	Purchase bats, pads, helmets, gloves and inners	\$1 280
Scamander River Golf Club	Purchase a track mower	\$5 500
Scottsdale Crows Football Club	Purchase football equipment and first aid equipment	\$3 474
Scottsdale Crows Football Club	Four members to undertake a level one sports trainer course	\$ 368
Somerset Amateur Basketball Association	Purchase basketballs and shooting hoops	\$ 650
South Burnie Hockey Club	Purchase goalie gear	\$1 796
South Hobart Sandy Bay Cricket Club	Purchase bowling machine, plus feeder and balls	\$2 100

Organisation	Project Title	Amount
Southern Country Golf Association Pty Ltd	Implement a junior development program	\$2 500
Southern Tasmanian Basketball League	Conduct the Tasmanian under 14 Girls and Boys Basketball Championships and Tasmanian Secondary Colleges Basketball Championships	\$1 000
Southern Tasmanian Basketball League	Conduct the Tasmanian under 16 Men's and Women's Basketball Championships	\$ 500
Southern Tasmanian Veterans Cycling Club	Purchase timing equipment	\$9 346
Southern Tasmanian Volleyball Association	Purchase poles, stands, whistles and a scoreboard	\$2 068
Southern Tasmanian Volleyball Association	Conduct coaching and referee courses	\$1 650
Southern Tasmanian Volleyball Association	Conduct the State beach volleyball championship	\$ 475
Sports Carnivals Association of Tasmania	Conduct the Tasmanian Christmas Carnivals Series	\$20 000
Spring Bay Field & Game	Purchase an automatic clay target thrower	\$3 663
St Helens Croquet Club	Purchase a timer for the irrigation system, balls and hoops	\$ 494
St Helens Football Club	Purchase a storage shed with concrete floor	\$ 426
St Helens Netball Association	Members to participate in a coach and umpire development program	\$ 350
Tamar Rowing Club	Purchase a rowing shell	\$8 000
Tamar Yacht Club	Purchase sails	\$3 000
Tamar Yacht Club	Purchase a boat	\$7 000
Tasmanian Gun Club	Purchase an automatic trap	\$9 840
Tasmanian Masters Athletic	Conduct the Tasmanian Masters Athletic "Brighton Country Challenge" Fun Run and Recreational Walk	\$1 000
Tasmanian Motorcycle Trials Club	Conduct a one day coaching and training program	\$1 000
Tasmanian Pony & Riding Club	Purchase a portable toilet	\$2 005
Tennis North	Conduct the 2005 Easter Championships	\$1 000
Tennis North	Purchase tennis balls	\$ 350

Organisation	Project Title	Amount
Ulverstone Anglers Club	Purchase an electronic utility scale, one set of oxygen gauges and three metres of hose for fish rearing purposes	\$ 291
Ulverstone Basketball Association	Conduct the Tasmanian Boy's and Girl's Primary Schools Basketball Championships	\$1 000
Ulverstone Bowling Club	Purchase a drilling machine	\$2 750
Ulverstone Bowling Club	Purchase 30 Henselite Mats	\$ 450
University of Tasmania Ultimate Frisbee Club	Members to undertake a coach accreditation program	\$1 500
University of Tasmania Ultimate Frisbee Club	Implement ' <i>come and try</i> ' sessions	\$ 200
University of Tasmania Ultimate Frisbee Club	Purchase two ultimate frisbee kits	\$ 390
University of Tasmania Ultimate Frisbee Club	Purchase 50 Discraft Ultrastars	\$ 375
University of Tasmania Ultimate Frisbee Club	Conduct the Tasmanian Two-Hat Ultimate Tournament	\$1 000
Wynyard Bowls Club	Purchase four sets of bowls	\$ 564
Wynyard Yacht Club	Conduct the 2005 Sabre Class Sailing Dinghy State Championships	\$ 597
Zodiacs Gymnastics Club	Purchase gymnastics equipment	\$2 312
Zodiacs Gymnastics Club	Conduct an acrobatics development program	\$1 350
TOTAL		\$366 363

Facilities and Open Space Development Program

Organisation	Project Title	Amount
Brighton Council	Construction of a multi-use pathway located on the East Derwent Highway.	\$13 333
Brighton Council	Construction of a new change room facility at Fergusson Oval.	\$12 667
Bruny Island Cricket Club	Installation of irrigation at the Alonnah Oval.	\$ 7 180
Burnie Surf Lifesaving Club	Purchase and installation of new roller doors for storage area.	\$ 1 475
Claremont Bowls Club	Improvement to existing pathways surrounding the bowling green.	\$ 1 595
Clarence City Council	Construction of a new playing field at Cambridge Memorial Oval.	\$99 807
Colebrook Golf Club	Sinking of a water bore for course irrigation.	\$ 8 674
CyclingSouth	Renovation of the former Glenorchy Swimming Pool Kiosk to provide a permanent office location for CyclingSouth.	\$ 4 980
Deloraine and District Pony Club	Construction of a cross-country course.	\$10 000
Derwent City Bowls Club	Construction of amenities, disabled access to the club and locker and tearoom facilities upgrade.	\$28 738
Devon Netball Association	Resurfacing of netball courts at the Maidstone Park Complex.	\$26 667
Dodges Ferry Horse Riding Club	Construction of an equestrian centre at Pembroke Park.	\$17 331
East Derwent Little Athletics Centre	Construction of an equipment storage shed.	\$ 7 000
Forth Football Club	Upgrade of lighting.	\$10 000
Glenorchy City Council	Construction of the Glenorchy Mountain Bike Park.	\$30 050
Glenorchy City Council	Construction of an indoor learn-to-swim/hydrotherapy pool.	\$69 950
Glenorchy District Football Club	Upgrade of kitchen.	\$10 000

Organisation	Project Title	Amount
Glenorchy Knights Soccer Club	Purchase and installation of lights at the club's training ground located at the Cadbury Oval.	\$ 5 188
Hockey South	Construction of a spectator shelter.	\$10 000
Howrah Bowls Club	Construction of a storage shed.	\$ 6 240
Huon Valley Council	Construction of the Dover Foreshore Walking Trail.	\$42 700
Huon Valley Golf Club	Upgrade of green.	\$ 3 665
Kentish Pony and Hack Club	Upgrade of equipment shed and resurfacing of grounds.	\$ 2 670
Kettering Cricket Club	Sinking of a water bore and installation of an irrigation system.	\$19 046
Kingborough Council	Construction of the Dru Point Multi Purpose Recreation Trail.	\$14 050
Kingborough Netball Association	Resurfacing of netball court.	\$ 4 504
Kingston Beach Sailing Club	Upgrade of the amenities and canteen.	\$ 3 855
Meercroft Park Development Committee	Purchase and installation of lights.	\$10 000
Mersey Valley Pony Club	Construction of new amenities.	\$10 000
Metro Claremont Soccer Club	Construction of a shelter to house existing spectator seating.	\$10 000
New Norfolk Junior Football Club	Installation of lights at Tynwald Park Football Oval.	\$ 6 892
North Hobart Junior Football Club	Construction of a kiosk/equipment store at the John Turnbull Oval.	\$10 000
Northern Suburbs Junior Soccer Association	Weily Park upgrade.	\$ 5 700
Northern Tasmanian Softball Association	Construction of a second international diamond at Churchill Park Sports Complex.	\$ 9 920
Perth Football Club	Re-floor existing change rooms and upgrade amenities.	\$ 8 820
Port Sorell Tennis Club	Resurfacing tennis courts.	\$10 000
Redpa Football Club	Installation of ground lighting.	\$ 4 500
Richmond Golf Club	Installation of an effluent irrigation system.	\$52 834

Organisation	Project Title	Amount
Royal Park Croquet Club	Upgrade of the playing surface, clubrooms and the construction of new storage and shelter shed.	\$ 1 938
Sandy Bay Croquet Club	Upgrade of the outdoor area.	\$ 2 650
Sandy Bay Sailing Club	Amenities upgrade, rectification of a corroded balustrade, flagpoles and replacement of box gutter and fascia board.	\$ 4 900
Seabrook Golf Club	Replacement of the clubhouse lintel and handrail.	\$ 3 200
Smithton Turf	Upgrade of the lighting at the Smithton Hockey Ground.	\$ 7 250
Stanley Golf Club	Sinking of a water bore for the irrigation of the Stanley Golf Course.	\$10 000
Strahan Golf Club	Renovation of the club amenities.	\$10 000
Strahan Senior Citizens 50 & Over Club	Upgrade of clubrooms.	\$ 4 680
Tamar Rowing Club	Gymnasium extension.	\$10 000
Tasmania Golf Club	Installation of an irrigation control system.	\$52 000
Ulverstone District Cricket Club	Construction of an outdoor coaching and training area.	\$16 541
Ulverstone Golf Club	Installation of an irrigation system.	\$10 000
West Tamar Pony Club	Upgrade of arena surface and installation of irrigation.	\$ 6 500
Woodbridge Cricket Club	Fencing and amenities construction.	\$ 2 900
Wynyard Golf Club	Upgrade of clubhouse.	\$10 000
Wynyard Yacht Club	Installation of stainless steel security grills.	\$ 1 655
Zodiaes Gymnastics Club	Cladding and insulation of internal walls and roof and the construction amenities that meet disability access requirements.	\$10 000
TOTAL		\$774 245

STATISTICS

	Page No.
Gaming Turnover, Taxation and Fees 01/07/00 to 30/06/05	41
Tax Rates Relating to Gaming Activities in Tasmania	43
Exclusions	44
Licensed Premises Gaming Licence Applications 01/07/04 to 30/06/05	45
Special Employee and Technician Licences 01/07/04 to 30/06/05	45
Complaints Received and Investigated by the Commission 01/07/04 to 30/06/05	46
Summary of Community Support Levy Expenditure 2004-05	47

Gaming Turnover, Taxation and Fees 2000-01 to 2004-05

CASINOS	TAXATION AND FEES					TURNOVER				
	2000-01	2001-02	2002-03	2003-04	2004-05	2000-01	2001-02	2002-03	2003-04	2004-05
	\$	\$	\$	\$	\$	\$	\$	\$	\$	\$
Table Gaming ¹	1 072 933	807 017	396 600	88 161	70 962	47 318 153	56 922 690	48 195 164	42 488 975	43 083 985
Gaming Machine ²	22 928 206	18 045 975	19 728 768	21 668 385	23 318 496	919 928 571	858 905 055	870 069 735	921 577 865	966 416 895
Keno Gaming	321 148	111 076	90 481	111 740	120 421	9 394 560	8 114 676	7 943 061	8 197 605	8 941 949
Racetrax	10 252	8 321	2 585	149	95	440 447	401 093	265 464	163 139	39 609
Casino Unclaimed Prizes ³	13 994	6 177	8 033	4 065	3 975					
Total	24 346 533	18 978 566	20 226 467	21 872 500	23 513 949	977 081 731	924 343 514	926 473 424	972 427 584	1 018 482 438
EXTERNAL GAMING IN HOTELS AND CLUBS										
Gaming Machines	26 586 280	23 717 127	27 032 670	31 126 387	31 516 418	749 549 881	853 338 805	946 163 909	1 038 795 594	1 081 989 121
Keno Gaming	2 450 397	922 373	972 268	963 900	1 173 513	64 512 497	64 636 137	65 793 787	69 103 387	78 782 039
Keno Unclaimed Prizes	216 776	213 215	217 189	229 868	285 129					
Total	29 253 453	24 852 715	28 222 127	32 320 155	32975060	814 062 378	917 974 942	1 011 957 696	1 107 898 981	1 160 771 160
INTERNET GAMING⁵										
Internet Casino	345	3 651	1 356	n/a	n/a	8 625	2 453 087	1 491 327	n/a	n/a
Internet Unclaimed Prizes	7 046	0	0	n/a	n/a					
GST CREDITS										
GST Credits (2000-01 Only) ⁴	-13 409 583	0	0	0	0					
Total Taxation	40 197 794	43 834 932	48 449 950	54 192 655	56 489 009					
LICENCE FEES AND PENALTIES										
Casino Licence Fees	1 577 800	1 666 960	1 703 365	2 553 400	2 757 600					
Casino Penalties	9 000	0	0	13 000	0					
Licence Premises Gaming Licence Fees	250 365	267 559	285 443	294 884	287 807					
Penalties	16 950	8 250	6 050	1 700	3 500					
Tasmanian Gaming Licence Fees	n/a	375 359	540 000	n/a	n/a					
Total	1 854 115	2 318 128	2 534 858	2 862 984	3 048 907					
OTHER FORMS										
Lotteries	19 664 647	20 522 691	21 633 169	21 883 218	22 093 345	62 176 485	64 653 730	69 172 663	69 489 033	69 563 428
Soccer Pools	46 115	51 728	68 093	55 483	59 078	379 381	179 862	220 112	197 817	205 416
Minor Gaming:										
Lucky Envelopes	320 803	226 924	n/a	271 794	53 183	4 582 900	5 673 100	6 105 570	6 794 850	1 329 576
Raffles	16 682	953	5 372	10 718	24	5 009 756	n/a	n/a	n/a	n/a
Bingo	66 639	16 592	300	n/a	219	2 549 315	n/a	n/a	n/a	n/a
Calcuttas	740	80	20	n/a	0	93 317	n/a	n/a	n/a	n/a
Tipstar	n/a	25 756	30 177	37 586	29 643	n/a	n/a	n/a	n/a	215 906
Telephone Sports Betting ⁵	1 218	81	n/a	n/a	n/a	228 876	16 271	n/a	n/a	n/a
Internet Sports Betting ⁵	n/a	7 647	99	n/a	n/a	n/a	4 407 471	1 645 437	n/a	n/a
Total	20 116 844	20 852 452	21 737 230	22 258 799	22 235 492	75 020 030	74 930 434	77 143 782	76 481 700	71 314 326

Reporting periods for all gaming taxes relate to the month and year the turnover and tax occurred. In accordance with section 150(5) of the *Gaming Control Act 1993* payment must be made by the 7th day of the month immediately following the month to which that tax relates.

Notes:

1. The figure reported for table gaming turnover is casino “handle”, which represents the amount of money exchanged for gaming chips at the tables.
2. The figures reported for Casino gaming machines include Admirals gaming.
3. Casino unclaimed prizes includes gaming machine and racetrax unclaimed prizes.
4. In 2000-01, with the introduction of the Commonwealth GST, a tax credit system was used to refund gaming operators for GST paid on gaming services. In July 2001 this system was superseded and all Gaming Tax rates were reduced by 9.12 per cent.
5. No Tasmanian Gaming Licence holders operated during 2004-05.

Tax Rates Relating to Gaming Activities in Tasmania

Gaming Activity		Tax Rate
Casino Table Games		0.88% of annual gross profit
Keno		5.88% of annual gross profit
TT-LINE (Spirit of Tasmania vessels)		
Gaming machines for TT-Line		17.91% of annual gross profit
Other forms of gaming for TT-Line		7.91% of annual gross profit
Gaming Machines ¹	<i>Annual Gross Profit(\$)</i>	
	<35 million	20.88%
	>35 million	25.88% of excess
Additional 4% CSL derived from Hotels and Clubs annual gross profit		
Simulated Internet Gaming ²	<i>Annual Gross Profit(\$)</i>	
Within Australia	<10 million	20%
	10-20 million	17.5% of excess
	>20 million	15% of excess
Outside Australia	Overseas Gross Profit	4% flat
Internet Gaming		
Sportsbetting		0.5% of turnover from wagers for people in Aust/NZ
		0.25% of turnover from wagers for people overseas
Fixed Odds Wagering		1% of turnover
Lotteries (no state lotteries)	100% of duty paid to Victorian Government for Tasmanian subscriptions. Minimum return to player is 60%.	
Tattersall's		79.4% of player loss where GST is payable
		90% of player loss where GST is <u>not</u> payable
Footy Tipping		58.41% of player loss where GST is payable
		67.5% of player loss where GST is <u>not</u> payable

Notes:

- Gaming machine tax is calculated on combined gross profit for both casinos and all hotels and clubs.
- The Commonwealth *Interactive Gambling Act 2001* prohibits the provision of simulated gaming services to persons located in Australia by internet gaming operators located in Australia or overseas.

Exclusions

Tasmanian Gambling Exclusion Scheme (TGES)

TGES Self-exclusions 2004-05

	Male	Female	Total	
Current at start of period	97	165	262	
New exclusions	42	43	85	
Revocations	10	23	33	
Current at end of period	129	185	314	

TGES Operator and other exclusions 2004-05

	WPC	CCC	Other Venues	Other	Totals
Current at start of period	107	7	34	0	148
New exclusions	10	7	23	1	41
Revocations	7	2	7	0	16
Current at end of period	110	12	50	1	173

Licensed Premises Gaming Licence Applications
01/07/04 – 30/06/05

Applications Received		Applications Approved		Applications Approved		Applications Rejected	
		Without special conditions		Subject to special conditions			
2004-05	2003-04	2004-05	2003-04	2004-05	2003-04	2004-05	2003-04
25	31	24	31	1	0	0	0

Of the 25 licensed premises gaming licence applications received in 2004-05, 22 related to a change of operator at an existing gaming venue (13 keno and gaming machine venues and 9 keno only venues), while the other three applications related to new keno venues.

In addition to the above, ten licences were renewed during the 2004-05 year.

Special Employee and Technician Licences Issued
01/07/04 – 30/06/05

	Special Employees				Technicians
	Casino	Licensed Premises Gaming Operative	Gaming Operator	Tasmanian Gaming Licence	
Applications Received	124	613	8	0	33
Licences Issued (1)	121	588	8	0	29
Applications Rejected	0	37	0	0	1
Licences cancelled, surrendered or not renewed (2)	54	325	4	0	26
Licences as at 30/06/2005	559	2595	42	39	171
Provisional Licences as at 30/06/005	0	0	0	0	0
Applications Pending 30/06/05	13	92	2	0	5

Licences issued includes all new licences issued, renewed licences as well as existing licences that have been upgraded to a new category of licence.

Licences cancelled, surrendered or not renewed include those licences that have been cancelled due to disciplinary action, voluntarily surrendered by the licence holder or not renewed by the licence holder on expiry.

**Complaints Received and Investigated by the Commission
01/07/04 - 30/06/05**

Operations	Table games	Keno	Gaming machines	Exclusions	Other (general)	Minor gaming	Total
Casino	9	0	14	0	0	0	23
Hotel	0	13	12	8	4	4	41
Club	0	2	3	0	0	0	5
Gaming Operator	0	0	0	0	0	0	0
Other	0	0	0	0	0	1	1

Summary of CSL Expenditure 2004-05

	50% of Levy to: Support Services, Research, Community Education, Other Health Services	25% of Levy to: Sporting Organisations	25% of Levy to: Charitable Organisations	Total
	\$	\$	\$	\$
Balance 1 July 2004	1 571 804	752 493	771 308	3 095 605
Receipts	2 514 272	1 257 136	1 257 136	5 028 544
Expenditure				
Administration and on costs	152 840		6 977	159 817
Gambling Support Services	702 262			702 262
Gambling Community Education	176 433			176 433
Gambling Research	43 606			43 606
Tasmanian Health and Wellbeing Fund	124 474			124 474
Sport and Recreation Grants		1 785 305		1 785 305
Charitable Organisations Grants			515 439	515 439
Social Programs	1 039 000			1 039 000
Neighbourhood Houses (Recurrent)	784 500		784 500	1 569 000
Smoke Free Education Campaign	200 000			200 000
Lifeline			102 000	102 000
Total Expenditure	3 223 115	1 785 305	1 408 916	6 417 336
Balance 30 June 2005	862 961	224 324	619 528	1 706 813

GLOSSARY

Break Even Network:

A group of gambling support service providers, contracted by the Department of Health and Human Services and funded through the Community Support Levy, offering counselling services and support to anyone affected by gambling.

Casino gaming:

Includes wagers on table games, gaming machines and keno systems at a casino. Casino games have set rules and fixed odds, designed to return a percentage from each wager to the casino operator.

Commission Rules:

Section 91 of the *Gaming Control Act 1993* enables the Commission to make rules for the conduct of gaming in licensed premises in respect of which a licensed premises gaming licence is in force. This type of licence is issued to clubs and hotels.

Gambling:

The lawful placement of a wager or bet on the outcome of a future uncertain event.

Gaming:

Gaming is all legal forms of gambling other than racing and sports betting, such as lotteries, poker and gaming machines, casino gaming, football pools, interactive gaming and minor gaming.

Gaming Machines:

A device where a player may place a small wager on a game of pure chance, or a game of both chance and an application of game rules, but not pure skill or manual dexterity, and potentially win a prize either in cash or in kind. In most jurisdictions, including Tasmania, operators must return at least 85 per cent of wagers to players as winnings, either by cash or a mixture of cash and product. Gaming machines have the capacity to be linked in order to offer major jackpots.

Gratuitous gaming:

Games played strictly for fun in a club or at a private function.

Instant lottery:

This is more commonly known as 'scratchie tickets', where a player scratches a coating off the ticket to identify from the characters underneath, whether the ticket is

a winner. Prizes in the instant lottery are paid on a set return to players and are based on the number of tickets in a set, the cost to purchase the tickets and a set percentage retained by the operator for costs.

Interactive gaming:

Interactive gaming is defined as gambling on activities conducted via an Internet casino site. It specifically excludes wagering in the form of racing and sports betting and lotteries via the Internet.

Keno:

A game where a player wagers that their chosen numbers match any of the 20 numbers randomly selected from a group of 80 numbers via a computer system. Keno is linked to all licensed gaming venues in Tasmania enabling the operator to offer large jackpot prizes. Keno has a fixed pay-scale such that the payout for each wager is established by rules, and is independent of the total wagers made on the game.

Licensed premises gaming licence:

A licensed premises gaming licence authorises the holder to obtain and possess gaming machines, keno equipment and other gaming equipment at the licensed premises to which the licence relates. This type of licence is issued to clubs and hotels.

Lotteries:

Lotteries are conducted Australia-wide by both government and commercial operators. There are three components to a lottery, the purchase of a ticket, a draw and a prize. A person whose ticket is selected in a lottery, wins a prize based on the total amounts wagered after deduction of a set percentage by the operator to cover costs. Lotteries are sold at various outlets around Australia such as newsagents. The operators may also conduct lotto, pools and instant lotteries.

Lotto:

A game where a player selects any six numbers from 1 to 45 in anticipation that those numbers will be among 8 numbered balls, randomly drawn from a ball draw device containing 45 balls numbered from 1 to 45. There are five prize divisions, with division one being the major prize. The amount of prize pay-out for each division is dependent on the amount of wagers made, less the operator's costs.

Minor gaming:

The collective name given to raffles, bingo, lucky envelopes and the like.

On-course bookmakers:

Persons licensed to accept wagers at a racetrack on both horses and greyhound racing. A player can wager any amount above a set minimum and will receive the bookmaker's odds at the time of making the wager, irrespective of whether the bookmaker later alters those odds.

On-course totalisator:

This is a TAB operated at a racecourse during race meetings.

Pools:

The pools is a numbers game of chance where the winning numbers are based on the results of the United Kingdom or Australian soccer matches.

Racetrax:

A simulated horse and greyhound racing game.

Racing:

Is the legal betting with bookmakers and totalisators, both on racecourses and off-course (TAB).

Special employee:

A special employee is the holder of a licence under the *Gaming Control Act 1993* who may be employed by a gaming venue or casino to undertake prescribed duties in relation to gaming operations, typically the operation of keno, gaming machines and casino table games.

Sports betting:

The wagering on all types of local, national and international sporting activities (other than the established forms of horse and greyhound racing), whether on or off-course, in person, by telephone, or via the Internet.

Technician:

A technician is the holder of a licence under the *Gaming Control Act 1993* who may install, repair or maintain gaming equipment in Tasmania, including gaming machines, security systems and gaming equipment.

Totalisator Agency Board (TAB):

This form of gaming is Australia-wide and is the amount wagered at TAB outlets (other than those on a race track). Totalisator gaming is where a player makes a 'unit'

wager, the operator deducts a percentage of the total units wagered, and the remainder is returned as dividends (winnings) to players in multiples of the unit wagered.

Turnover:

The total amount of money wagered by gamblers, including recycled winnings.

Wagering:

Wagering is all legal forms of gambling on racing and sporting events.