



Tasmania

Tasmanian Gaming Commission

Annual Report
2003–04

TASMANIAN GAMING COMMISSION
2003-04 ANNUAL REPORT

Contents

	<i>Page</i>
INTRODUCTION	2
FUNCTIONS OF THE COMMISSION	2
SUPPORT TO THE COMMISSION	2
Participation In Working Groups And Other Forums	3
LEGISLATIVE FRAMEWORK	4
Gaming Control Act 1993	4
TT-Line Gaming Act 1993	4
MAJOR ACTIVITIES AND GAMING DEVELOPMENTS IN 2003-04	4
Harm Minimisation Initiatives	4
Tasmanian Gambling Exclusion Scheme	4
Web Enabled Database Project	5
Assessment Of New Games And Jackpot Systems	5
Gambling Awareness Media Campaign	6
Update Of The Commission's Rules	7
Australian Gambling Statistics	7
Public Accounts Committee Enquiry	7
CIG Code Of Practice	7
GAMING IN TASMANIA	8
Casino Operations	8
Wrest Point Hotel Casino And Country Club Casino	8
Licensing Of Casino Staff	8
Admirals Casino Pty Ltd	8
Gaming In Hotels And Clubs	8
Operation Of Keno In Hotels And Clubs	9
Licensing Of Special Employees And Technicians	9
Responsible Service Of Gaming Courses	10
Tasmanian Gaming Licence Operations	10
Minor Gaming	10
COMMUNITY SUPPORT LEVY	11
Problem Gambling Category	12
Research Into Gambling	12
Charitable Organisations Category	12
Sport And Recreation Category	12
EQUIPMENT AND MANUFACTURERS	12
GAMING INSPECTION	15
BREACHES OF THE LEGISLATION	15
Licensed Venues	15
Special Employees	14
Technicians	14
STATISTICS	15
Gaming Turnover Taxation And Fees	15
Tax Rates Relating To Gaming Activities In Tasmania	17
Exclusions	18
Licensed Premises Gaming Licence Applications	18
Special Employees And Technicians Licences	19
Complaints Received And Investigated By The Commission	19
Community Support Levy 2003- 04	20
GLOSSARY	21
Appendix 1	22
Community Support Levy Grant Recipients 2003– 04	

INTRODUCTION

The Tasmanian Gaming Commission (the Commission) is an independent body responsible for the regulation of gaming in Tasmania, established under the *Gaming Control Act 1993*. The Commission is a three-person body whose members are:

- Mr Don Challen – Chairman (September 1994 – October 2003)
- Mr Clyde Eastaugh – Chairman (November 2003 – present)
- Professor Kate Warner

Mr Challen and Mr Eastaugh have been members of the Commission since its inception in September 1994. Professor Kate Warner has been a member of the Commission since June 2001.

Generally, the Commission meets on a monthly basis. Special meetings are also held as required.

In 2003-04, the Commission met formally on thirteen occasions. Mr Eastaugh attended all of the Commission meetings, Professor Warner attended twelve and Mr Challen attended eleven.

FUNCTIONS OF THE COMMISSION

The functions of the Commission are to:

- Regulate and control gaming to ensure that it is conducted honestly and free from criminal influence and exploitation. This encompasses gaming in casinos (including the Spirit of Tasmania vessels), hotels and clubs and extends to minor gaming activities and interactive gaming and wagering.
- Approve internal control, administrative and accounting procedures, rules and conditions in relation to gaming activities and to determine disciplinary matters.
- Investigate and make recommendations to the Minister on gaming regulatory matters.
- Research and investigate matters relating to gaming including the probity and financial stability of persons involved in the conduct of gaming operations. Those persons include applicants for special employee, technician, licensed premises gaming and Tasmanian gaming licences and applicants seeking listing on the Roll of Recognised Manufacturers and Suppliers of Gaming Equipment.
- Liaise with other authorities and persons responsible for the regulation and control of the conduct of gaming.
- Oversee the administration of the Community Support Levy and make recommendations to the Minister for Finance and the Treasurer on the allocation of funds from the Levy to appropriate projects and services.
- Investigate and resolve complaints relating to the conduct of gaming.
- Perform such other functions as required by the *Gaming Control Act 1993*, *Racing Regulation Act 1952* and *TT-Line Gaming Act 1993*.

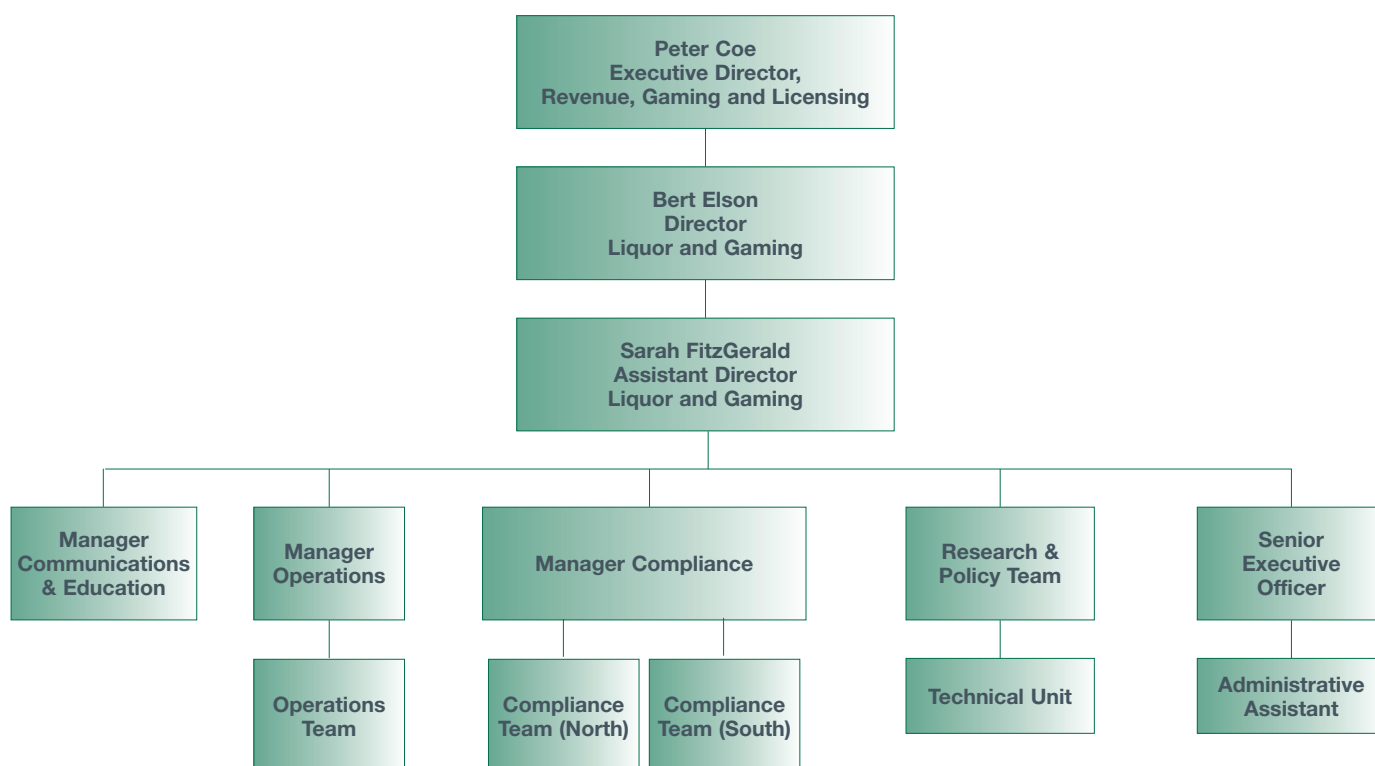
SUPPORT TO THE COMMISSION

The Commission is supported by staff of the Liquor and Gaming Branch in undertaking its day-to-day activities. The Branch is located within the Revenue, Gaming and Licensing Division of the Department of Treasury and Finance.

The Liquor and Gaming Branch includes Government Inspectorate offices at Wrest Point Hotel Casino and Country Club Casino. The inspectorates oversee gaming operations at the casinos and undertake compliance inspections at hotels and clubs and onboard the Spirit of Tasmania vessels.

The Branch is responsible for coordinating and preparing monthly Commission papers. The Executive Director, Revenue, Gaming and Licensing; Director, Liquor and Gaming; Assistant Director, Liquor and Gaming and the Senior Executive Officer provide administrative advice and support at Commission meetings.

Administrative Support To The Tasmanian Gaming Commission



PARTICIPATION IN WORKING GROUPS AND OTHER FORUMS

Officers of the Liquor and Gaming Branch represent the Tasmanian Gaming Commission in a number of forums and on several inter-jurisdictional working groups. These include:

The Gambling Industry Group (GIG): GIG is the peak industry representative body, comprising representatives of Tattersall's, the Federal Group, Admirals, TOTE Tasmania, the Australian Hotels Association and Registered Clubs Tasmania. Representatives of the Tasmanian Gaming Commission and the Gambling Support Bureau also attend GIG meetings as observers and provide advisory services to its members.

The Tasmanian Gambling Consultative Group (TGCG): The TGCG brings together all relevant State interests in the matter of gambling and its Tasmanian impact. These interests include all gambling industry codes, relevant government bodies, relevant community sector organisations and interested consumer organisations. The aim of the TGCG is to encourage its represented membership to discuss and share information on current issues relating to the impact of gambling on the wider community within Tasmania.

The Casino and Gaming Chief Executive Officers Forum: The key forum for discussion of inter-jurisdictional gaming regulatory matters is the Casino and Gaming Chief Executive Officers Forum (CEOs Forum). The CEOs Forum is generally held bi-annually, with the key meeting held prior to the annual Gaming Regulators' Conference. The Executive Director, Revenue, Gaming and Licensing Division and the Director, Liquor and Gaming represent the Tasmanian Gaming Commission on the Forum.

The Responsible Regulators' Gambling Working Party (RRGWP): Support to the Gaming CEOs is provided by the RRGWP. The purpose of the RRGWP is to provide advice on regulatory responses on responsible gambling issues for consideration by Gaming CEOs. The RRGWP is comprised of senior Gaming Officers of each member jurisdiction.

LEGISLATIVE FRAMEWORK

GAMING CONTROL ACT 1993

The *Gaming Control Act 1993* (the Act) provides the legislative framework for the licensing and regulation of gaming in the State. Gaming activities covered by the Act include State-wide gaming machine and keno gaming, casino gaming, interactive gaming and wagering and minor gaming.

A Deed of Agreement between the Crown and Federal Hotels Pty Ltd, which grants exclusive rights to Federal Hotels to conduct casino operations and operate keno and gaming machines in Tasmania, is set out in Schedule 1 of the Act.

TT-LINE GAMING ACT 1993

The gaming operations on board the *Spirit of Tasmania* vessels are controlled by the *TT-Line Gaming Act 1993*. Reciprocal Victorian legislation regulates gaming aboard the two vessels whilst the vessels operate in Victorian waters. The Commission is responsible for the licensing and regulation of gaming on those vessels. The licence to conduct gaming operations is held by the TT-Line Company Pty Ltd. Admirals Casino Pty Ltd holds the franchise for the management of gaming on board the vessels. Gaming activity aboard the two vessels is presently limited to gaming machines.

MAJOR ACTIVITIES AND GAMING DEVELOPMENTS IN 2003-04

HARM MINIMISATION INITIATIVES

TASMANIAN GAMBLING EXCLUSION SCHEME (TGES)

The new integrated gambling exclusion scheme (TGES) was formally introduced in August 2002. The new exclusions framework was developed by the Commission in partnership with the Gambling Support Bureau (located within the Department of Health and Human Services), the gaming industry and community and welfare organisations.

The *Gaming Control Act 1993* was amended in 2001 to provide for more flexible options to assist persons to moderate their gambling behaviour when it affects them personally, or those around them. The legislative scheme builds on the existing industry-operated self-exclusion scheme. Key features of the new scheme included the extension of the exclusions framework to hotels and clubs, and the introduction of penalties under the Act if exclusions are breached or excluded persons are wilfully permitted to gamble in gaming venues.

Under the framework, it is possible for a person to be excluded from any gaming venue in Tasmania. A person may be excluded from gambling via four different mechanisms: by excluding themselves (self-exclusion), by a venue operator, by a third-party who has a close personal interest in that person's welfare, or by the Commissioner of Police. Individuals wishing to self-exclude may be excluded from a gaming venue, the restricted gaming area or certain gambling activities (keno, gaming machines, totalisator betting or table gaming). Exclusions can also apply to patrons who engage in criminal or antisocial behaviour where that behaviour is related to gambling.

The operation of the new scheme is closely monitored by the Commission and the other parties that have contributed to its development. The scheme was formally reviewed by Commission officers in August 2003. A series of recommendations to improve the efficiency and effectiveness of existing administrative arrangements were endorsed by the Commission in November 2003.

The Commission will continue to monitor the effectiveness of the Tasmanian Gambling Exclusion Scheme and make improvements as necessary.

WEB ENABLED DATABASE PROJECT

During 2003-04, the Liquor and Gaming Branch developed a web-enabled database to record, analyse and report on exclusions completed under the Tasmanian Gambling Exclusion Scheme (TGES).

The Liquor and Gaming Branch, in conjunction with the Australian Hotels Association (AHA) administers the TGES. The AHA is responsible for administration of the self-exclusion component of the TGES. The Liquor and Gaming Branch is responsible for oversight and enforcement of the TGES and for administering venue-operator, third-party and police exclusions.

Creation of the web-enabled database allows information to be shared between a number of users. The database enables detailed information to be produced for use in the compliance and inspection programs.

The TGES database has been designed to deliver the following functions:

- a mechanism to record information from the TGES exclusions notices prepared by the Registered Accredited Providers (RAPs), venue operators and the Tasmanian Gaming Commission;
- the capacity to store digital photographs with each exclusion record; and
- the capacity to produce various types of exclusions reports.

ASSESSMENT OF NEW GAMES AND JACKPOT SYSTEMS

During the year, the Commission continued to scrutinise applications for new gaming machine games, equipment and jackpot systems.

To date, the Commission has rejected several gaming machines that failed to meet the statutory minimum requirement for return to player, and has required casino monitoring systems to be modified to record and reconcile stand alone jackpot systems.

The Commission has made significant progress in the introduction of Player Information Displays (PIDs) on new casino gaming machine games. New games lodged for approval after 31 October 2004 will require equivalent PID systems as legislated for Crown Casino in Victoria.

GAMBLING AWARENESS MEDIA CAMPAIGN

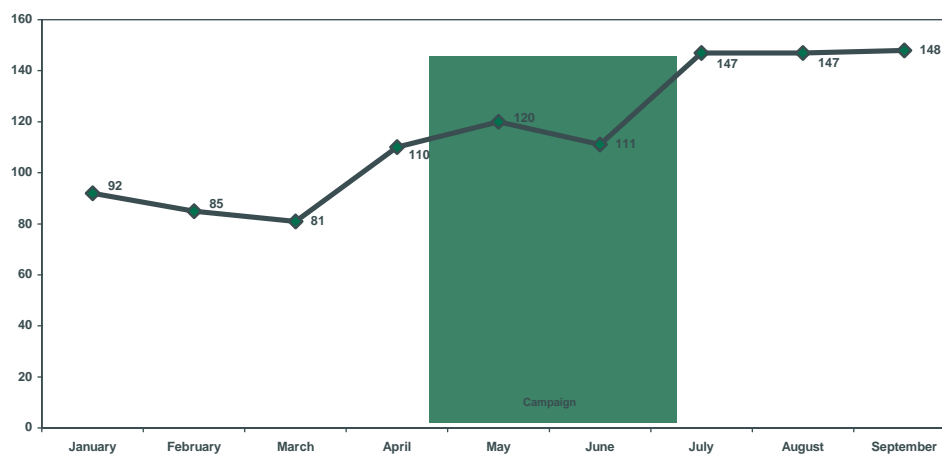
The Gambling Awareness Media Campaign concluded during the 2003-04 financial year. Funded through the problem gambling component of the Community Support Levy and developed by the Gambling Support Bureau, the campaign targeted persons that gamble, those who know someone who gambles or who might be affected by another person's gambling.

The campaign included its own baseline survey of community knowledge, opinion and understanding of gambling impact. This survey was repeated in August 2003, with additional questions based on recall of the campaign messages.

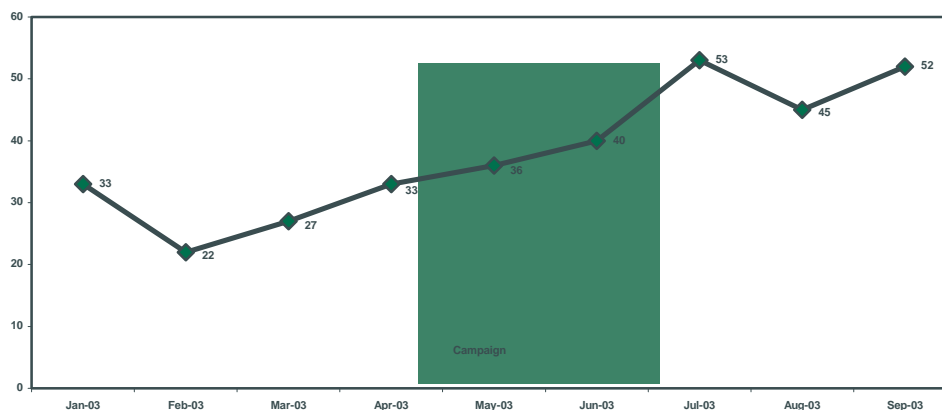
Evaluation of the Tasmanian Gambling Awareness Media Campaign revealed:

- a 52 per cent increase in first time callers to the Gambling Helpline Tasmania immediately after television advertisements were aired and a 40 per cent increase in first time callers in the two months following the advertisements.
- Community identification of gambling support services increased significantly during and post campaign. For example, public recognition of Gambling Helpline Tasmania increased from 3 per cent in the pre campaign survey to 57 per cent in the post campaign survey.
- The combined service figures for those attending Break Even personal and family gambling counselling indicated a 47 per cent increase in total client numbers per month during the media campaign, then levelled for the three months immediately after the campaign.

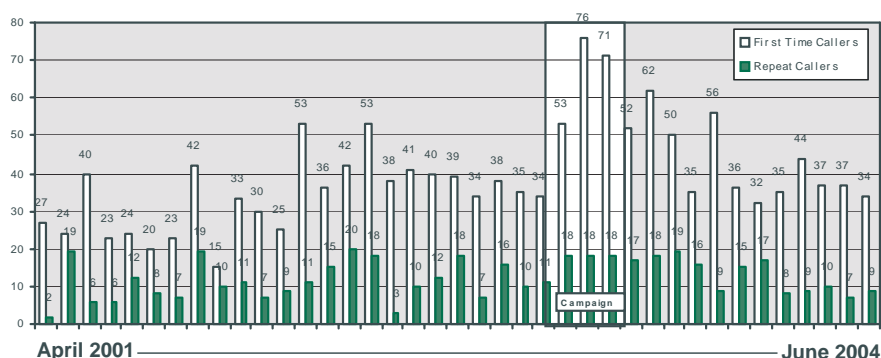
**Break Even Personal and Family Counselling - Clients per month
1 January - 30 September 2003 (incorporating media campaign)**



**Break Even Support Group Members
1 January - 30 September 2003 (incorporating media campaign)**



Gambling Helpline Tasmania Target Group Calls Per Month April 2001 - June 2004



The post campaign survey results showed that Tasmanians could better identify and articulate problematic gambling behaviours in themselves and others as a result of the campaign.

UPDATE OF THE COMMISSION'S RULES

Section 91 of the *Gaming Control Act 1993* provides for the Commission to make rules for the conduct of gaming in venues. In September 2003, the Commission endorsed a number of changes to the Rules to enhance its readability and effectiveness. A copy of the updated Rules was distributed to all venues in May 2004.

A copy of the Commission's Rules is displayed in all gaming venues and is available via the Tasmanian Gaming Commission website at www.gaming.tas.gov.au.

AUSTRALIAN GAMBLING STATISTICS

The *Australian Gambling Statistics* (AGS) is a national record of gambling statistics compiled by the Tasmanian Gaming Commission from data collected from the racing and gaming authorities in each jurisdiction. The AGS is the only complete compilation of statistics relating to gambling in Australia.

The 20th edition of the AGS was publicly released in September 2003. KPMG was contracted to compile the publication. Copies of the AGS are available from the Commission.

PUBLIC ACCOUNTS COMMITTEE ENQUIRY

Following the announcement in April 2003 that a new Deed of Agreement had been signed between the Government and Federal Hotels, an amendment to the legislation was introduced in Parliament to ratify the Deed. After the *Gaming Control Amendment Bill 2003* was introduced in the Legislative Council, the Council referred the matter of the new Deed to the standing Public Accounts Committee (PAC) for investigation.

The PAC was given terms of reference to examine four main issues:

- the return to taxpayers arising from the new Deed;
- the transparency of negotiations for the new Deed;
- the quality of the deal extracted by the Government; and
- the non-competitive nature of the negotiations.

The PAC received submissions and heard evidence in July and August 2003. The PAC's report was tabled in Parliament in September 2003. The PAC broadly supported the outcomes arising from the new Deed, and the process that was followed. The PAC recommended that the Legislative Council pass the *Gaming Control Amendment Bill 2003*. The Bill received Royal Assent in October 2003.

GAMBLING INDUSTRY GROUP CODE OF PRACTICE

The Gambling Industry Group (GIG) is the peak industry body, established as part of the Tasmanian Government's integrated gambling policy. The GIG was formed in 1995 to address issues of responsible advertising, patron care and codes of conduct.

GIG released a revised Code of Practice in June 2004. The new GIG Code of Practice includes specific provisions on hours of operation and expands the responsibility of venues for ensuring the safety and comfort of patrons.

GAMING IN TASMANIA

CASINO OPERATIONS

WREST POINT HOTEL CASINO AND COUNTRY CLUB CASINO

The Deed of Agreement between the Crown and Federal Hotels Pty Ltd provides exclusive rights for the Federal Group to operate table gaming, gaming machines and keno throughout the State until 30 June 2018.

Australian National Hotels Pty Ltd holds the casino licence for Wrest Point Hotel Casino and Tasmanian Country Club Casino Pty Ltd holds the casino licence for Country Club Casino.

The Wrest Point and Country Club casinos offer Baccarat, Blackjack, Pontoon, Roulette, Caribbean Stud Poker, Five Card Stud Poker, Money Wheel and Sic Bo. A simulated racing game (Trackside) is also approved as a casino game and operates at the Wrest Point Hotel Casino and the Country Club Casino. The State-wide keno game is also available within the casinos.

Gaming machine numbers remained steady at Wrest Point Hotel Casino, with 668 machines in operation as at 30 June 2004. At Country Club Casino, gaming machine numbers decreased from 493 to 492 in the year to 30 June 2004.

In October 2003 the Commission approved the trial of a new variation of the table gaming inspection system. This system provided for the use of a six point inspection program, subject to stringent conditions. Neither casino has chosen to trial the six point system to date.

The Commission maintains a presence in each casino via the southern and northern Government Inspectorates. Inspectors are usually on site during normal business hours and when casino table gaming is operating.

LICENSING OF CASINO STAFF

Staff employed at Wrest Point Hotel Casino, Country Club Casino and Admirals Casino as Casino Operatives, Casino Management or Casino Security must be licensed before undertaking gaming duties. The total number of persons licensed to perform gaming duties at these casinos was 555 as at 30 June 2004.

ADMIRALS CASINO PTY LTD

TT-Line Company Pty Ltd (TT-Line) operates two ships *Spirit Of Tasmania I* and *II* on the Bass Strait crossing between Devonport and Melbourne. The gaming operations on board the *Spirit Of Tasmania* vessels are controlled by the *TT-Line Gaming Act 1993*. The Commission is responsible for the licensing and regulation of gaming on those vessels. The licence to conduct gaming operations is held by the TT-Line Company Pty Ltd (TT-Line). TT-Line has a contractual arrangement with Admirals Casino Pty Ltd for the management of gaming on the vessels.

There are 23 gaming machines on board each vessel and gaming machines are the only form of gaming currently offered by the operator.

The tax rate that applied to Admirals Casino during 2003-04 was 17.91 per cent of gross profit for gaming machines. There is no annual licence fee.

During the year, the Government Inspectorate conducted 57 inspections of the gaming rooms aboard the two vessels.

On 13 January 2004 the *Spirit of Tasmania III* made its inaugural crossing from Devonport to Sydney, but TT-Line decided not to offer gaming services on this vessel.

GAMING IN HOTELS AND CLUBS

The 2003 Deed of Agreement between the Crown and Federal Hotels resulted in a State-wide cap to the number of gaming machines. The cap was set at a total of 3680 machines. In addition, the maximum number of gaming machines permitted in all hotels and clubs is 2,500, with 30 machines permitted in each hotel and 40 machines permitted in each club.

During 2003-04, 14 applications for licensed premises gaming licences for the operation of gaming machines were assessed. Of the 14 applications, 13 related to a change of operator at an existing gaming venue and one related to a new gaming machine venue. One hotel relinquished its gaming machines during the period.

Machine numbers increased from 2 248 to 2 287 in the year to 30 June 2004. The following table lists changes in the number of venues and gaming machines by type of venue for the period:

	Hotels		Clubs		Total	
	No of venues	No of machines	No of venues	No of machines	No of venues	No of machines
30 June 2002	94	1 842	12	193	106	2 035
30 June 2003	95	2 075	10	173	105	2 248
30 June 2004	95	2 114	10	173	105	2 287

It is a statutory requirement that gaming machines return, on average, a minimum of 85 per cent of turnover to players.

Hotel and club operators lease machines and keno equipment from the gaming operator (Network Gaming), which also provides training and marketing services to the venues, and coordinates machine and equipment maintenance by Getronics. As part of the 2003 Deed of Agreement, Federal Hotels agreed to introduce a flexible operating model that permits a Licensed Premises Gaming Operator of a club or an hotel to choose the games and gaming machines from a selection considered appropriate by the Gaming Operator. As a result, Network Gaming has developed a flexible operating model, in conjunction with Commission officers. The Commission has endorsed this model.

As part of the 2003 Deed, Federal Hotels has agreed to exclude from its charges to all clubs and hotels, all amounts attributable to the cost of maintaining, operating and re-developing the Central Monitoring System, used to monitor gaming within hotels and clubs.

Taxation on gaming machines is calculated on gross profit, that is, turnover less winnings paid. The tax rates are based on a sliding scale from 20.88 per cent upon the first \$35 million of gross profit and 25.88 percent upon the rest of the gross profit. The applicable percentage is based on the combined gross profit from all gaming machines in hotels, clubs and casinos (excluding Admirals Casino Pty Ltd).

OPERATION OF KENO IN HOTELS AND CLUBS

Keno has been operating State-wide since 1 December 1994. During the year three new venues commenced operating keno, which resulted in the number of venues that operated keno increasing marginally from 50 to 53 while the number of venues that operated both keno and gaming machines remained at 105.

During the year, Network Gaming progressively introduced new keno hardware into all venues. The previous equipment had been in operation since Taskeno was first introduced into hotels and clubs. There were no significant technical issues with the introduction of the new equipment.

Keno is taxed at the rate of 5.88 per cent of gross profit.

LICENSING OF SPECIAL EMPLOYEES AND TECHNICIANS

During 2003-04, 1 381 special employee and 59 technician licence applications were received (including licence renewal applications) with 1 137 of these relating to keno and gaming machine operations in hotels and clubs. Of the licence applications received, 13 were refused as a consequence of probity and integrity concerns, 41 were not considered due to incompleteness and 3 were withdrawn. In all, a total of 1 192 licences were issued.

During 2003-04, 345 licences were cancelled, surrendered or not renewed. Of these, 206 were hotel and club special employee licence holders, the majority of whom did not renew their licence upon expiry.

The number of special employees licensed to operate keno and gaming machines in hotels and clubs increased from 2 298 to 2 581 in the year to 30 June 2004.

Persons who are employed either by the casinos or manufacturers to install, maintain or repair gaming equipment must be licensed as a technician. The number of licensed technicians decreased from 195 as at 30 June 2003 to 175 as at 30 June 2004.

RESPONSIBLE SERVICE OF GAMING COURSES

It is a condition of every special employee's licence that the licensee must undertake a Responsible Service of Gaming course approved by the Commission within three months of being licensed. The Commission suspended 41 special employee licences for failing to comply with this condition during 2003-04.

The Commission has approved the Australian Hotels Association (AHA) and the Institute of TAFE Tasmania as recognised providers of the Responsible Service of Gaming course in Tasmania. The AHA conducts Responsible Service of Gaming training courses on a regular basis throughout the State. The Institute of TAFE Tasmania offers the option of undertaking Responsible Service of Gaming training as a single module or as a component of its hospitality training certificates.

TASMANIAN GAMING LICENCE OPERATIONS

In late 1999, the *Gaming Control Act 1993* was amended to provide for the issue of a Tasmanian Gaming Licence. A Tasmanian Gaming Licence provides for the operation of Internet gaming and wagering activities from premises located in Tasmania.

A Tasmanian Gaming Licence (TGL) can be endorsed with one or more endorsements, which will allow for the conduct of the following:

- simulated gaming (internet casinos);
- fixed odds wagering (horses and greyhounds, where wagers are taken over the internet or telephone);
- sports betting (sports bet wagering over the internet or telephone); and
- major lotteries.

The Minister for Finance who is responsible for Gaming is also able to prescribe a new endorsement should any new gaming or wagering activity not fall under any of the above categories.

Two Tasmanian gaming licences were current as at 30 June 2004. TABCORP Online Pty Ltd and PBL Gaming Management Pty Ltd hold Tasmanian gaming licences. However neither entity has operated under its licence.

Despite continued enquiries, no new Tasmanian gaming licence applications were received in the twelve months to 30 June 2004.

MINOR GAMING

Minor gaming is regulated in accordance with the provisions contained in Part 4B of the *Gaming Control Act 1993*. The term "minor gaming" is used to refer to a number of games including bingo, raffles, lucky envelopes and Calcutta sweepstakes that have been authorised by the Commission.

The Act requires that the proceeds of conducting minor gaming must be used for the lawful purpose of a not-for-profit organisation or for a charitable reason, and not for the private gain or benefit of any person, except by way of charity. Charitable purposes include education, welfare, sport and recreation.

Under the Act, a permit must be obtained in order to undertake minor gaming activities and these are valid for 12 months. During that period, permit holders are also required to notify the Commission of their intention to conduct games. Permits are not required for the following activities declared exempt under part 1, section 3(8A) of the Act:

- tipping competitions concerning the outcome or occurrence of a sporting event – where a participant does not contribute more than \$150, and total contributions do not exceed \$10 000 and are distributed to winners;
- raffles - where the total prize value does not exceed \$500; and
- sweepstakes – where a participant does not contribute more than \$260, and total contributions do not exceed \$10 000 and are distributed to winners.

At the end of 2003-04, taxation is payable to the Commission in respect of the turnover obtained from the conduct of authorised games, excluding lucky envelopes, that exceeds \$20 000.

During 2003-04, the Commission issued 640 permits to conduct minor gaming. The following table lists the number of permit holders that notified their intention to conduct games during that period.

Game	Number of Individual Activity Notifications
Raffles	237
Bingo	68
Lucky envelopes	392
Calcuttas	54
Gratuitous gaming	21

Further information on minor gaming, including permit applications and the tax scale, can be accessed via the Tasmanian Gaming Commission's website at www.gaming.tas.gov.au.

COMMUNITY SUPPORT LEVY

The *Gaming Control Act 1993* requires that a percentage of the gross profit derived from gaming machines in hotels and clubs is paid into a Community Support Levy (CSL) under the control of the Treasurer. That is 4 per cent of the gross profit from gaming machines operated in hotels and clubs respectively.

The CSL must be distributed by the Treasurer in the following manner:

- 25 per cent for the benefit of sport and recreation clubs;
- 25 per cent for the benefit of charitable organisations; and
- 50 per cent for the provision of -
 - (i) research into gambling;
 - (ii) services for the prevention of compulsive gambling;
 - (iii) treatment for the rehabilitation of compulsive gamblers;
 - (iv) community education concerning gambling; and
 - (v) other health services.

The CSL commenced on 1 January 1997. In 2003-04, \$4 853 114 was paid into the CSL from the profits of gaming machines in clubs and hotels and was accumulated for distribution in the proportions specified above.

The Commission is responsible for making recommendations to the Treasurer on the allocation of funds from the CSL to appropriate projects and services.

The Department of Health and Human Services has responsibility for making recommendations to the Tasmanian Gaming Commission for expenditure against the 50 per cent component of the CSL and the 25 per cent of the CSL for the benefit of charitable organisations.

The Gambling Support Bureau is located within the Department of Health and Human Services. The Bureau is responsible for policy development and program management in relation to State-wide problem gambling service delivery, the gambling research program, gambling community education and health promotion, and the Charitable Organisations grants programs. Gambling Support Bureau staff and functions are funded by the CSL. Two of the four officers of the Bureau are costed to the Community Education component of the CSL and provide direct service delivery to the community, developing gambling education material and conducting health promotion activities across the State.

In May 2003, the Treasurer approved funding of approximately \$3.4 million from the CSL over a three year period to fund a new social program to enhance the provision of support services in high need Tasmanian communities. The program comprises a number of initiatives to expand the support services available to the community in Tasmania.

PROBLEM GAMBLING CATEGORY

In 2003-04, \$3 980 508 was expended on the provision of services to assist persons affected by problem gambling. This amount was disbursed as follows:

- \$784 168 was spent on the provision of support services to assist people affected by gambling. This included personal and family counselling, financial counselling, support groups and the 24 hour telephone helpline.
- \$317 101 was spent on gambling community education and harm minimisation for a range of activities. This funding included a review and evaluation of the gambling awareness media campaign conducted during 2003.
- \$468 796 was spent on The Tasmanian Health and Wellbeing Fund (THWBF) Program. The Program seeks to address the wider impact of gambling on services within the community through the expenditure of grants under the 'other health services category'.
- \$799 443 was spent on the Neighbourhood Houses Program which comprises a number of initiatives to expand the support services available to the community in Tasmania. One of the initiatives is the establishment of two new neighbourhood houses at East Devonport and New Norfolk.
- \$1 611 000 was spent on a new Social Program which comprises a number of initiatives to expand the support services available to the community in Tasmania.

RESEARCH INTO GAMBLING

On 9 December 2003 the Gambling Support Bureau's Research and Evaluation budget of \$189 545 was endorsed by the Tasmanian Gaming Commission for a period of three years to July 2006. The Gambling Research and Evaluation Program will be funded from the three-year Gambling Support Bureau Budget approved by the Treasurer.

CHARITABLE ORGANISATIONS CATEGORY

An amount of \$760 831 was spent on charitable organisations, through the Community Support Levy Charitable Organisations Grants Program (CSLCOGP) and the Small Grants Program under the CSLCOGP.

Between 2003-04 grants totalling \$498 969 (ranging from \$1 250 to the current maximum of \$30 000) were awarded to 36 charitable entities under the CSLCOGP. A list of grant recipients is provided in Appendix 1.

Through the Small Grants Program under the CSLCOGP, 102 grants totalling \$174 911 (ranging from \$620 to the current maximum of \$2 000) were awarded to various charitable organisations. A list of grant recipients is provided in Appendix 1.

SPORT AND RECREATION CATEGORY

Sport and Recreation Tasmania, which is located within the Department of Economic Development, has the responsibility for making recommendations to the Commission for expenditure against the 25 per cent of the levy for the benefit of sporting organisations. In 2003-04, over \$1.2 million was expended by way of grants to sport and recreation organisations and for facility development. A list of grant recipients is provided in Appendix 1.

EQUIPMENT AND MANUFACTURERS

The Gaming Control Act 1993 requires the Commission to approve all suppliers and manufacturers of gaming equipment used in casinos, clubs and hotels. The Commission approved RentWorks Limited, BSG Pty Ltd and WMS Gaming Inc for listing on the Roll of Recognised Manufacturers and Suppliers of Gaming Equipment (the Roll) in the year to 30 June 2004. An application from SNP Sprint Australia was also received during this period and is currently being assessed. The number of manufacturers and suppliers listed on the Roll as at 30 June 2004 is 32.

GAMING INSPECTION

During the year the structure of the Inspectorate changed slightly due to the ongoing merging of liquor and gaming functions in the Liquor and Gaming Branch. A Manager has now been appointed in the compliance area to oversee the functions of both the Northern and Southern Inspectorates. The Government Inspectorate also comprises Senior Compliance Officers, Gaming Inspectors and Gaming Compliance Officers. Both the Northern and Southern Inspectorates maintain an office at each casino and are responsible for ensuring that casino gaming, State-wide machine gaming, keno gaming and minor gaming are conducted in accordance with the legislation and the rules of the games. The Inspectorate conducts regular inspections of gaming activities at hotels and clubs, on the *Spirit of Tasmania* vessels and minor gaming activities.

As an alternative to taking disciplinary action against a venue, section 78(1) of the *Gaming Control Act 1993*, allows the Commission to direct a licence holder in writing to rectify the matter of concern.

The following table lists the number of rectification orders issued by the Commission against a licensed operator or a licensed premises gaming operator:

Rectification Orders Issued By The Gaming Inspectorate		
	Hotels	Clubs
2000-01	62	6
2001-02	48	7
2002-03	43	5
2003-04*	6	2

*The use of rectification orders was curtailed during the year pending amendments to the *Gaming Control Act 1993*.

BREACHES OF THE LEGISLATION

The Gaming Control Act 1993 gives the Commission power to take disciplinary action against licence holders. Disciplinary action may include the cancellation or suspension of a licence or gaming endorsement, the issue of a letter of censure, the amendment or imposition of conditions of a licence or the imposition of a fine. A fine not exceeding \$1 000 000 may be imposed on a casino or gaming operator and for the operator of a hotel or club, a fine not exceeding \$5 000 may be imposed.

The Commission takes a serious view of any breach of the legislation or licence conditions. Each case is considered on its merits. In imposing a penalty the Commission takes into account issues including the seriousness of the breach and the past record of compliance by the licensee.

LICENSED VENUES

The following table lists the disciplinary action taken by the Commission against licensed premises gaming licence holders during 2003-04:

Licence Holder	Venue	Act Section	Date of Breach	Outcome
M A Enterprises Pty Ltd	Westbury Hotel	112S(1)(c)	19 Aug 03	Fine \$500 Impose Condition
Benija Pty Ltd, Shaenad Pty Ltd & Piperj Pty Ltd	Campbell Town Motel & Bistro	50(2)(a)	26 Sep 03	Impose Condition
Vantage Hotel Group Pty Ltd	Hotel Tasmania	50(2)(a)	30 Jan 04	Fine \$1 000
James Marshall McGrath	Carrick Inn	92(2)	19 Apr 04	Censure

SPECIAL EMPLOYEES

The following table lists the disciplinary action taken by the Commission against special employee's licence holders during 2003-04:

Licence Holder	Act Section	Date of Breach	Outcome
Natasha Sharne Laurence	65(3)(a)	9 Jan 03	Cancel Licence
Lynn Francis Archer	112S(1)(g)	11 Apr 03	Impose Condition
Troy Anthony Edwards	112U(b)	14 Jul 03	Suspend Licence
Troy Anthony Edwards	112S(1)(a)	14 Jul 03	Cancel Licence
Matthew Dominic Rizollo	112S(1)(g)	6 Jun 03	Impose Condition
Allan James MacKenzie	112S(1)(a)	9 Sep 03	Cancel Licence
Nicole Louise Aiken	112U(b)	19 Aug 03	Suspend Licence
Markus Dargis	112S(1)(d)	19 Aug 03	Cancel Licence
Markus Dargis	112S(1)(g)		
Angie Simone Brakey	112U(b)	6 Oct 03	Suspend Licence
Reginald Deane Wootton	112U(b)	16 Oct 03	Suspend Licence
Warwick Thomas Piper	112U(b)	7 Jan 04	Suspend Licence
Dwayne Gary Quin	112S(1)(a)	25 Jan 04	Cancel Licence
Reginald Deane Wootton	112S(1)(a)	2 Mar 04	Cancel Licence
Lisa Maree Glover	112U(b)	17 Mar 04	Suspend Licence
Kathryn Grace Dean	112U(b)	31 Mar 04	Suspend Licence
Grant Edward Watson	112U(b)	21 Apr 04	Suspend Licence
Timothy James Richardson	59	11 May 04	Cancel Licence
Ian Maxwell Wilson	112U(b)	25 May 04	Suspend Licence

TECHNICIANS

The following table lists the disciplinary action taken by the Commission against licensed technicians during 2003-04:

Licence Holder	Act Section	Date of Breach	Outcome
Mark Jonathon Sypkes	112S(1)(c)	23 Sep 03	Fine \$200

STATISTICS

GAMING TURNOVER, TAXATION AND FEES

1 JULY 1999 TO 30 JUNE 2004

CASINOS	TAXATION AND FEES				TURNOVER					
	1999-00	2000-01	2001-02	2002-03	2003-04	1999-00	2000-01	2001-02	2002-03	2003-04
Table Gaming ¹	\$ 1 283 851	\$ 1 072 933	\$ 807 017	\$ 396 600	\$ 88 161	\$ 44 378 176	\$ 47 318 153	\$ 56 922 690	\$ 48 195 164	\$ 42 488 975
Gaming Machine ²	21 389 296	22 928 206	18 045 975	19 728 768	21 668 385	874 829 236	919 928 571	858 905 055	870 069 735	921 577 865
Tax Guarantee Shortfall ³	388 256									
Keno Gaming	390 652	321 148	111 076	90 481	111 740	10 435 849	9 394 560	8 114 676	7 943 061	8 197 605
Racetrax	23 927	10 252	8 321	2 585	149	761 244	440 447	401 093	265 464	163 139
Casino Unclaimed Prizes ⁴	22 642	13 994	6 177	8 033	4 065					
Total	23 498 624	24 346 533	18 978 566	20 226 467	21 872 500	930 404 505	977 081 731	924 343 514	926 473 424	972 427 584
EXTERNAL GAMING IN HOTELS AND CLUBS										
Gaming Machines	19 802 445	26 586 280	23 717 127	27 032 670	31 126 387	604 953 709	749 549 881	853 338 805	946 163 909	1 038 795 594
Keno Gaming	2 308 037	2 450 397	922 373	972 268	963 900	62 328 148	64 512 497	64 636 137	65 793 787	69 103 387
Keno Unclaimed Prizes	259 177	216 776	213 215	217 189	229 868					
Total	22 369 659	29 253 453	24 852 715	28 222 127	32 320 155	667 281 857	814 062 378	917 974 942	1 011 957 696	1 107 898 981
INTERNET GAMING										
Internet Casino	0	345	3 651	1 356	n/a	3 851	8 625	2 453 087	1 491 327	n/a
Internet Unclaimed Prizes	0	7 046	0	0	n/a					
GST CREDITS										
GST Credits (2000-01 Only) ⁵	0	-13 409 583	0	0	0					
Total Taxation	45 868 283	40 197 794	43 834 932	48 449 950	54 192 655	n/a	n/a	n/a	n/a	n/a
LICENCE FEES AND PENALTIES										
Casino Licence Fees ³	1 533 600	1 577 800	1 666 960	1 703 365	2 553 400					
Casino Penalties	10 000	9 000	0	0	13 000					
Licence Premises Gaming Licence Fees	212 363	250 365	267 559	285 443	294 884					
Penalties	1 900	16 950	8 250	6 050	1 700					
Tasmanian Gaming Licence Fees	n/a	n/a	375 359	540 000	n/a					
Total	1 757 863	1 854 115	2 318 128	2 534 858	2 862 984	n/a	n/a	n/a	n/a	n/a

OTHER FORMS

Lotteries	20 964 004	19 664 647	20 522 691	21 633 169	21 883 218	58 319 267	62 176 485	64 653 730	69 172 663	69 489 033
Soccer Pools	76 084	46 115	51 728	68 093	55 483	223 071	379 381	179 862	220 112	197 817
Minor Gaming:										
Lucky Envelopes	545 737	320 803	226 924	n/a	271 794	7 796 249	4 582 900	5 673 100	6 105 570	6 794 850
Raffles	19 003	16 682	953	5 372	10 718	5 706 772	5 009 756	n/a	n/a	n/a
Bingo	83 541	66 639	16 592	300	n/a	3 195 911	2 549 315	n/a	n/a	n/a
Calcuttas	845	740	80	20	n/a	106 557	93 317	n/a	n/a	n/a
Tipstar	n/a	n/a	25 756	30 177	37 586	n/a	n/a	n/a	n/a	n/a
Telephone Sports Betting⁶	2 671	1 218	81	n/a	n/a	534 148	228 876	16 271	n/a	n/a
Internet Sports Betting⁶	n/a	n/a	7 647	99	n/a	n/a	n/a	4 407 471	1 645 437	n/a
Total	21 691 885	20 116 844	20 852 452	21 737 230	22 258 799	75 881 975	75 020 030	74 930 434	77 143 782	76 481 700

Reporting periods for all gaming taxes relate to the month and year the turnover and tax occurred. In accordance with section 150(5) of the *Gaming Control Act 1993* payment must be made by the 7th day of the month immediately following the month to which that tax relates. All taxation and licence fee figures are sourced from the Tasmanian Department of Treasury and Finance's Intergovernmental Finance and Accounting Branch.

1. The figure reported for table gaming turnover is casino "handle", which represents the amount of money exchanged for gaming chips at the tables.
2. The figures reported for Casino gaming machines and racetrax includes Admirals gaming.
3. 2003-04 Casino licence fees were adjusted following passage of the revised *Gaming Control Act 1993*.
4. Casino unclaimed prizes includes gaming machine and racetrax unclaimed prizes.
5. In 2000-01, with the introduction of the Commonwealth GST, a tax credit system was used to refund gaming operators for GST paid on gaming services. In July 2001 this system was superseded and all Gaming Tax rates were reduced by 9.12 per cent.
6. No Tasmanian Gaming Licence holders operated during 2003-04.

TAX RATES RELATING TO GAMING ACTIVITIES IN TASMANIA

GAMING ACTIVITY		TAX RATE
Casino Table Games		0.88% of annual gross profit
Keno		5.88% of annual gross profit
TT-LINE (Spirit of Tasmania vessels)		
Gaming machines for TT-Line		17.91% of annual gross profit
Other forms of gaming for TT-Line		7.91% of annual gross profit
Gaming Machines ⁽¹⁾	<i>Annual Gross Profit(\$)</i>	
	<35 million	20.88%
	>35 million	25.88% of excess
Additional 4% Community Support Levy derived from Hotels and Clubs annual gross profit		
Minor Gaming (bingo, raffles and sweepstakes)	<i>Turnover(\$)</i>	
	<20 000	Nil
	20 000-50 000	0.15% of excess
	50 000-100 000	0.2% of excess plus \$45
	100 000-500 000	0.25% of excess plus \$145
	>500 000	0.3% of excess plus \$1 145
Simulated Internet Gaming ⁽²⁾	<i>Annual Gross Profit(\$)</i>	
Within Australia	<10 million	20%
	10-20 million	17.5% of excess
	>20 million	15% of excess
Outside Australia	Overseas Gross Profit	4% flat
Internet Gaming		
Sportsbetting		0.5% of turnover from wagers for people in Aust/NZ 0.25% of turnover from wagers for people overseas
Fixed Odds Wagering		1% of turnover
Lotteries (no state lotteries)		
	100% of duty paid to Victorian Government for Tasmanian subscriptions. Minimum return to player is 60%.	
Tattersall's		79.4% of player loss where GST is payable 90% of player loss where GST is not payable
Footy Tipping		58.41% of player loss where GST is payable 67.5% of player loss where GST is not payable

Notes:

(1) Gaming machine tax is calculated on combined gross profit for both casinos and all hotels and clubs.

(2) The Commonwealth Interactive Gambling Act 2001 prohibits the provision of simulated gaming services to persons located in Australia by internet gaming operators located in Australia or overseas.

EXCLUSIONS

Tasmanian Gambling Exclusion Scheme (TGES)

TGES Self-exclusions 2003-04

	Male	Female	Total
Current exclusions at start of period	62	107	169
New exclusions	42	98	140
Revocations	8	39	47
Current exclusions at end of period	96	166	262

TGES Operator and other exclusions 2003-04

	Wrest Point	Country Club	Other Venues	Other*	Totals
Current exclusions at start of period	79	3	17	0	99
New exclusions	34	6	21	0	61
Revocations	6	2	4	0	12
Current exclusions at end of period	107	7	34	0	148

*Other includes Admirals, third party, and police exclusions.

LICENSED PREMISES GAMING LICENCE APPLICATIONS

Licensed Premises Gaming Licence Applications 1 July 2003 to 30 June 2004

Applications Received		Applications Approved Without special conditions		Applications Approved Subject to special conditions		Applications Rejected	
2003-04	2002-03	2003-04	2002-03	2003-04	2002-03	2003-04	2002-03
31	28	31	26	0	2	0	0

Of the 31 licensed premises gaming licence applications received in 2003-04, 27 related to a change of operator at an existing gaming venue (14 keno and gaming machine venues & 13 keno only venues), three applications related to new keno venues and one related to a keno venue that changed from a keno only venue to a keno and gaming machine venue. There was one application for surrender of licence for a keno and gaming machine venue during 2003-04.

In addition to the above, 9 licences were renewed during the 2003-04 year.

SPECIAL EMPLOYEES AND TECHNICIAN LICENCES

Special Employee and Technician Licences Issued 1 July 2003 to 30 June 2004

	Special Employees				Technicians
	Casino	Licensed Premises Gaming Operative	Gaming Operator	Tasmanian Gaming Licence	
Applications Received	230	1 137	14	0	59
Licences Issued (1)	216	922	13	0	41
Applications Rejected	1	54	0	0	0
Licences cancelled, surrendered or not renewed (2)	91	206	10	0	34
Licences as at 30.6.2004	556	2 581	51	39	175
Provisional Licences as at 30.6.2004	0	0	0	0	4
Applications Pending 30.6.2004	5	70	1	0	5

(1) Licences issued includes all new licences issued, renewed licences as well as existing licences that have been upgraded to a new category of licence.

(2) Licences cancelled, surrendered or not renewed include those licences that have been cancelled due to disciplinary action, voluntarily surrendered by the licence holder or not renewed by the licence holder on expiry.

COMPLAINTS RECEIVED AND INVESTIGATED BY THE COMMISSION

Complaints Received and Investigated by the Commission 1 July 2003 to 30 June 2004

Operation	Table Games	Keno	Gaming Machines	Exclusions	Other (General)	Minor Gaming	Total
Casino	12	1	10	16	2	0	41
Hotel	0	11	16	26	2	0	55
Club	0	0	1	2	0	5	8
Gaming Operator	0	1	0	0	0	0	1
Other	0	0	0	1	0	4	5

COMMUNITY SUPPORT LEVY 2003- 04

	50% of Levy to: Support Services, Research, Community Education, Other Health Services	25% of Levy to: Sporting Organisations	25% of Levy to: Charitable Organisations	Total
	\$	\$	\$	\$
Receipts	2 426 557	1 213 279	1 213 279	4 853 115
Expenditure				
Administration and on costs	209 432		19 623	229 055
Gambling Support Services	784 168			784 168
Gambling Community Education	317 101			317 101
Tasmanian Health and Wellbeing Fund	468 796			468 796
Sport and Recreation Grants		1 200 610		1 200 610
Charitable Organisations Grants			760 831	760 831
Social Programs	1 611 000			1 611 000
Neighbourhood Houses (Recurrent)	722 557		799 443	1 522 000
TOTAL EXPENDITURE	4 113 054	1 200 610	1 579 897	6 893 561

GLOSSARY

Break Even Network	A group of gambling support service providers, contracted by the Department of Health and Human Services and funded through the Community Support Levy, offering counselling services and support to anyone affected by gambling.
Commission Rules	Section 91 of the <i>Gaming Control Act 1993</i> enables the Commission to make rules for the conduct of gaming in licensed premises in respect of which a licensed premises gaming licence is in force.
Gratuitous gaming	Games played strictly for fun in a club or at a private function.
Licensed premises gaming licence	A licensed premises gaming licence authorises the holder to obtain and possess gaming machines, keno equipment and other gaming equipment at the licensed premises to which the licence relates.
Racetrax	A simulated horse and greyhound racing game.
Special employee	A special employee is the holder of a licence under the <i>Gaming Control Act 1993</i> who may be employed by a gaming venue to undertake prescribed duties in relation to gaming operations, specifically the operation of keno and gaming machines.
Technician	A technician is the holder of a licence under the <i>Gaming Control Act 1993</i> who may install, repair or maintain gaming equipment in Tasmania, including gaming machines, security systems and gaming equipment.
Turnover	The total amount of money wagered by gamblers, including recycled winnings.

Appendix 1

COMMUNITY SUPPORT LEVY GRANT RECIPIENTS 2003– 04

The following grant programs are funded from the Community Support Levy and are managed through the Gambling Support Bureau in the Department of Health and Human Services.

It should be noted that whilst the following projects were approved in 2003-04, not all of the funding was expended in the financial year.

CHARITABLE ORGANISATIONS GRANT PROGRAM

Organisation	Project Title	Amount
Arthritis Tasmania Inc	Warm Water Exercise for Young Adults	\$9 862.60
Australian Society for the Study of Intellectual Disability - ASSID (Tasmania)	Purchase of a laptop and data projector	\$5 000.00
Beauty Point Early Learning Centre	Erect Safety Fencing on front Boundary	\$5 000.00
Bounce Back Foundation Ltd.	Building Tasmanian Communities - mentoring to improve life skills	\$27 500.00
Bridgewater (& Gagebrook) Youth Activities Service	Get Out There - Weekend Activities	\$18 737.00
Child Health Association Inc	Eat Well Tasmanian Families	\$29 855.00
Clarence Plains People-Link Inc.	Our Life Peer Support Project	\$29 959.60
Clarendon Children's Home Inc.	Clarendon Educational Program	\$5 000.00
Clubhouse Tasmania Incorporated	Pre-employment Skills Development Worker	\$29 989.28
Cosmos Incorporated	Gone Bush - Bush camping for the disabled	\$14 330.00
Cystic Fibrosis Tasmania Inc	Counselling Program	\$9 985.00
Dooloomai Youth Project Inc	Back to Belonging	\$5 000.00
Dragons Abreast Tasmania Inc	Training and exercise activities for survivors of breast cancer	\$3 000.00
Edmund Rice Camps Tasmania Inc	Northern Tassie Family Camp	\$5 000.00
Epilepsy Association Of Tasmania Inc.	Videos about epilepsy	\$15 360.00
Family Planning Tasmania Inc	Teenage Pregnancy Prevention and Support Program	\$26 588.00
Fern Tree Community Association Inc.	Minor repairs necessary to make community centre functional	\$1 250.00
Filipino Women's Support Group, Inc. (FWSG)	Distribution of brochures	\$1 550.00
Goodwood Community Centre Inc	Goodwood Parent Early Intervention	\$7 040.00
Indigenous Tasmanians Aboriginal Corporation	Increasing Library Resources	\$1 320.00
Interweave Arts Association Inc.	Arts Roar: City Park Labyrinth Project	\$9 350.00
Jordan River Service Inc. Gagebrook Community Centre	Jordan River Pensioners Club - Social, recreational and educational activities	\$10 758.00

Jordan River Services Inc.	Pete's Community Workshed - practical workskill training	\$10 000.00
Kickstart Arts Inc	24/7 The Ezine -Concepts of home and family and culturally diverse backgrounds	\$22 000.00
Lilydale Senior Citizens Club Inc.	Club room minor repairs necessary for continued use	\$5 000.00
Oakdale Services Tasmania	Aging in Place	\$5 000.00
Playgroup Tasmania Inc	Music Therapy	\$30 000.00
Quit Tasmania - A Smoking and Health Campaign Inc	Youth Smoking Campaign	\$30 000.00
Sailability Tasmania Inc.	Sailability - A Community Challenge	\$10 000.00
St Giles Society Inc	Seating Clinic - Modification and customisation of wheelchairs	\$7 166.67
Tasmanian Council on AIDS, Hepatitis and Related Diseases (TasCAHRD)	Psychostimulant Education Project	\$29 991.55
Tasmanian State School Parents & Friends (Inc)	Healthraising - Healthier fundraising options for schools and community	\$28 143.00
The Devonport Playhouse Inc.	Parent Links - link parents to parent/child service providers	\$10 000.00
UCA - Family Resource Centre Pilgrim Services	Promoting Positive Parenting and Life	\$5 000.00
War Widows Guild of Australia Tasmanian Branch Inc	Necessary minor repairs and fitting replacement	\$5 234.00
Whitelion Tasmania Inc	Anti - Bullying and Positive Choices Program	\$30 000.00
TOTAL		\$498 969.70

SMALL GRANTS OPPORTUNITY

Organisation	Project	Amount
Advocacy Tasmania Inc	PowerPoint projector to assist with education work with clients, families, service providers and community	\$1 925.00
Anglicare Tasmania Inc	Art equipment and tutoring services for homeless young people at Youthcare	\$2 000.00
Association for Christian Homes for the Aged Inc. Hawthorn Village Hostel	Garden program to promote past interests, optimising physical fitness and give a sense of accomplishment	\$1 246.50
Australian Breastfeeding Assoc. Tas Branch Southern Region	Electric breast pumps and hygien kits for mothers experiencing difficulties in breastfeeding	\$1 995.45
Australian Red Cross	Dining chairs for the Roadhouse, a drop in food and information service for homeless and vulnerable youth	\$1 815.00
Bethlehem House Homeless Mens Assistance Centre	Computers for literacy and numeracy programs as part of a structured case management plan	\$2 000.00
Bicheno Lions Club Inc	Defibrillator for the local Health Centre	\$1 000.00

Brain Foundation Tasmania	Prepare stroke resource kits for distribution to hospitals, health centres and general community	\$2 000.00
Break O'Day Community Enterprise Cooperative Soc Ltd	Provide a life skills education course 'switched on' to disadvantaged local people	\$620.00
Break O'Day State Emergency Service (SES) Unit	Generator to provide emergency lighting at incidents to assist volunteers providing a vital service	\$2 000.00
Bruny Island Respite Community House Inc (BIRCH)	Freezer to store meals for distribution to the frail aged, disabled and disadvantaged	\$900.00
Burnie Police and Citizens Boys & Girls Club Inc	Equipment for anti-bullying team-building program	\$1 910.30
Burnie Youth Alcohol and Drug Service	Multi-media projector to produce and present Power Point presentations in schools and other venues	\$1 898.60
Care and Rehabilitation Ministries Inc	Freezer to store food before distribution	\$1 365.00
Caroline House Inc	Swim and gym classes for the residents	\$2 000.00
Circular Head Rural Health Services Inc	Counselling room furnishings	\$1 835.00
Clubhouse Tasmania	Remove old carpet and estapol floors at the Centre	\$1 760.00
Colony 47 Inc	Emergency packs and starter kits for people that are homeless	\$1 906.50
Computer Bank Tasmania	Server to streamline software installation	\$2 000.00
Deloraine Hospital Auxiliary	Furnish the meeting room for member and community use	\$1 795.00
Deloraine Meals on Wheels	Printer and fax and heated Eskies for delivery of meals to the frail aged or disabled	\$1 000.00
Devonport Community House Inc	Fridge to better cater for centre's functions	\$1 114.00
Diabetes Australia - Tasmania	Camp for children with diabetes	\$2 000.00
Edmund Rice Camps Tas Inc	Tents to aid the programs for all young people who access the program	\$2 000.00
Equipment and Technology Library (Cerebral Palsy Tas)	Small growth chair and height-adjustable wheelie stools required by students with disabilities	\$2 000.00
Evandale Scout Group - Scouts Australia, Tasmania Branch	Assistance in upgrading and maintaining the historic graveyard	\$2 000.00
Family Planning Tasmania	Data projector to support education and training services	\$1 980.00
Family Support (Jordan River Service Inc)	Let's Go Girls Program for young single mothers in the Brighton community	\$2 000.00
Flinders District Hospital Auxillary MPC Auxiliary	Assist in purchase of a DPL99A lift for Launceston Airport to assist the frail aged and disabled	\$2 000.00
Foster Carers Assoc of Tasmania Inc	Equipment to assist in training Foster Carers	\$2 000.00
Geeveston Scout Group - Scouts Australia, Tasmania Branch	Equipment for physical activities and a first aid kit	\$1 351.72
Glenorchy Meals on Wheels	Portable Eskies and heat/freeze packs for the transportation of hot and cold meals to our recipients	\$1 750.00
Girl Guides Assoc Australia	Display board, alcohol cook sets and an urn for promotional and camp activities	\$1 968.50

Grandparents Raising Grandchildren Support Group	Plan, publicise and stage information forums in Launceston and Ulverstone	\$2 000.00
Grow Tasmania	Office equipment to assist with production of newsletter and service promotion	\$685.98
Hobart City Mission	Advertising material for the 'Friends' befriending service	\$968.00
Hospice Care Assoc N.W. Tas. Inc	Train people with knowledge and skills to enable them to look after clients with a life-threatening illness	\$1 710.00
Huon Valley Council Youth Service	Produce a tattoo to be included in a sexual health package that promotes a safe sex message	\$1 870.00
Huon Valley Respite Centre Inc	Demountable carry-all frame for the community transport bus for collapsible wheel-chairs	\$2 000.00
Kentish Youth Services Inc	Equipment for the new youth centre in Wilmot	\$2 000.00
King Island Supporting Disabilities	Materials, equipment and travel for volunteer facilitators to undertake a craft program for disabled residents on King Island	\$1 980.00
Latrobe Senior Citizens Club	Higher armed chairs for elderly people	\$2 000.00
Launceston Benevolent Society Inc	Blankets and disposable nappies for needy families	\$2 000.00
Lifeline North West Tasmania	Training of community volunteers in telephone counselling	\$2 000.00
Lifeline Tasmania	Computer and software to assist with data for telephone counsellors	\$2 000.00
Lungs Under stress and Trauma (LUST)	Portable concentrator for use of members who are oxygen dependent	\$2 000.00
Magra CWA Branch	Learn-to-Swim programme for 5-9 yr olds	\$2 000.00
Meander Valley Centre for Health and Wellbeing Inc	Kitchen for the 'community shed' primarily for men to develop a 'community garden' and young people mentoring activities	\$1 800.00
Mens Shed St Helens	Computer for community members to enable them to learn new skills	\$1 978.00
Mental Health Council of Tasmania (MHCT) Inc	Funds to cover basic operating costs	\$2 000.00
Mersey Volunteer Unit-State Emergency Service (SES)	Mobile search lights to be used in searching for missing persons	\$2 000.00
Migrant Resource Centre North Tas. Inc	Petrol and maintenance cost for the vans of 'Accessing Opportunities' a refugee support program	\$2 000.00
Mission Australia - U Turn	Spot welder for training people to enter the paint and panel industry	\$1 999.00
Oakdale Services Tasmania - Oakdale Lodge	Purchase of DVDs to enable clients of Oakdale Services to enjoy movie watching	\$2 000.00
Paraplegic and Quadriplegic Association of Tasmania Inc	A Laser printer to allow volunteers to produce in-house fact sheets and brochures	\$1 099.00
P.R. and Friends Inc and Youth Associate Committee Launceston	Travel and vehicle costs for delivery of food and clothing to needy children and families	\$2 000.00

Pete's Community Workshed Bridgewater	Assistance meeting running costs ie. electricity, insurance, etc	\$2 000.00
Polish Welfare Office (Polish Assoc. Hobart Inc.)	Polish Aged Care Resource Kit	\$2 000.00
Punch Bowl Community Garden	Shale paths around community garden	\$1 083.00
Richmond Fellowship of Tasmania Inc	Washing machine for enhancing living skills for the Gordons Hill Lodge Program	\$1 685.00
Richmond Meals on Wheels	Carry Hot container for delivery of meals to the frail aged or disabled	\$1 000.00
Rotary Club of Somerset Inc	Conduct a one day outdoor multicultural festival	\$2 000.00
Royal Volunteer Coastal Patrol - St. Helens Division	Radio equipment to allow 24/7 day operation for 'safety of life at sea'	\$1 464.02
Rubicon Club	Health forum for Port Sorell Residents	\$1 250.00
Salvation Army Tasmania	Arts material for the Hobart Bridge Program to encourage participation and self-development	\$2 000.00
Shelter Tasmania Inc	Shelving and scanner to create a resource library	\$644.95
Smithton Royal Volunteer Coastal Patrol c/- Ulverstone Division	VHF scanning radio marine, fax machine, 27 MG radio to provide safety marine service weather reports	\$1 150.00
Society for Multiply Disabled People of Tas. Inc	Washing machines on separate premises to wash clients' clothing and a food processor and vacuum cleaner for client support service	\$1 669.00
South Eastern Nursing and Home Care Assoc Inc	Swivel bath seats to assist ease of bathing for clients	\$1 950.00
Southmore Study Centre	Project materials and vehicle hire for the extension of the Club Excel Program	\$1 060.00
Special Olympics Tasmania Inc	Laptop computer for use at competitions including the Inaugural National Junior Games Launceston 2004	\$1 884.00
Spurr Wing	Replace old beds at Spurr Wing	\$2 000.00
St Georges School Parents and Friends Assoc	Modified bicycles for students with multiple disabilities to participate in, and benefit from, the bike riding program at the school	\$2 000.00
St Helens Community Care Group Inc	To assist with funding for petrol costs in transporting elderly, infirmed, disadvantaged	\$2 000.00
St John Ambulance Australia - Tasmania	Production of promotional flyers, volunteer handbooks and referral manuals	\$1 956.00
St Mary's Day Centre	Ergonomic chairs for the use of clients who access the Centre	\$2 000.00
St Vincent de Paul Society Tasmania Inc	Leaders training weekend for young volunteers in the youth support program	\$1 500.00
St Vincent de Paul Society Tas Inc Launceston Region	Commercial fridge to allow distribution of fresh and nutritious food to those in need	\$2 000.00

Stainforth Court Residential Tenancy Action Group	Install a computer system in the community room for the 85 tenants on low-incomes at Stainforth	\$1 549.85
Survivors Inc	Security system for 'women in abusive relationships' centre	\$1 110.00
Tandara Lodge Community Care Inc	Health group to utilise 'Living Longer, Living Stronger' Program and equipment	\$1 604.00
Tasman Multi-purpose Service	Series of workshops to better equip volunteers working in the Tasman Peninsula	\$1 910.00
Tasmanian Association for Mental Health	Seminar/Workshop to improve community awareness about anxiety/depression	\$2 000.00
Tasmanian Association of Prisoner Support Services Inc	Printing of information brochures, stationary and web hosting for better access of information	\$1 917.00
Tasmanian Council on AIDS, Hepatitis and Related Diseases	Nutritious lunches at support meetings, for people living with chronic liver disease	\$1 650.00
Tasmanian Mens Health and Wellbeing Assoc Inc	Mentor Training to provide services for men and boys in the exploration of gender and relationship issues and values	\$2 000.00
Tasmanian Mounted Search and Rescue Inc	Workplace level 2 First Aid Training for members	\$2 000.00
Tasmanian Rowing Council Inc	Adjustable sculling blades to upgrade disabled rowing programme	\$2 000.00
Tasmanians with Disabilities Inc.	Digital projector to assist with the running of Disability Awareness Training sessions	\$1 799.00
Towers Inc (Toy Town)	Computer package including software for use by the organisation for client support	\$2 000.00
Ulverstone Community House Inc	Printing and stationary supplies, material costs, phone, postage and publicity for the 'Lifestyle Challenge' Program	\$2 000.00
Volunteer Ambulance Officers Assoc of Tas Inc	Statewide seminar to enhance communication between volunteers and provide a forum for further study	\$2 000.00
Volunteering Tasmania	Portable gazebo structures to be used by volunteer organisations for their volunteers	\$940.00
Waverley Scout Group - Scouts Australia, Tasmania Branch	Renovations to hall due to past vandalism	\$2 000.00
West Coast Health and Community Services (Strahan)	Funding to run life skills program for young people who will be moving from area to further their studies	\$400.00
West Coast Health and Community Services (Rosebery and Strahan)	Slip Stream Circus workshops in schools and wider community	\$990.00
West Coast Health and Community Services (Rosebery and Queenstown)	Conduct a Health and Well-being Program for men and boys	\$1 580.00
West Ulverstone Primary School Parents and Friends Assoc Inc	Trestle tables to conduct a breakfast program	\$1 584.00
Womens Karadi Aboriginal Corporation	Update kitchen facilities for preparation of nutritional meals for aged and low-income community	\$1 400.00
Womens Legal Service Tas Inc	Training equipment to assist with client legal education and training in legal rights and responsibilities	\$955.00

Wynyard Community Garden	Materials for the establishment of the garden	\$2 000.00
Youth House	Contribution to the 'Post Card Project'	\$2 000.00
TOTAL		\$174 911.37

SPORT TASMANIA PROGRAM

Organisation	Project Title	Amount
19th Hobart Boys Brigade	Indoor equipment	\$2 000
2nd Derwent Sea Scout Group		\$1 530
Australian Italian Club Tennis Club		\$996
Australian Time Trial Association (Tas Branch)	Mt Wellington Challenge	\$1 000
Australopers Orienteering Club		\$1 215
Bicheno Golf Club Inc	Specially modified clubs for juniors	\$465
Break O'Day Aquatic Centre Committee		\$1 183
Bridport Bowls Club Total	Upgrade fence	\$4 580
Bridport Sailing Club		\$1 818
Burnie Golf Club Inc	Greens mower	\$2 000
Burnie Gymnastics Club Inc	Matting	\$2 000
Burnie Netball Association		\$3 000
Burnie Rugby Union Club		\$2 000
Burnie Ten Inc	Skilled Burnie Ten	\$5 000
Burnie Yeoman Cricket Club Inc	Synthetic carpet	\$1 400
Channel Cricket Association Inc		\$3 350
Cherokee Softball Club Inc	Helmets, chest protectors, facemasks and bats	\$594
City to Casino Fun Run	City to Casino Fun Run	\$2 000
Claremont Little Athletics Centre Inc	High jump equipment	\$2 000
Clarence United Soccer Club Inc	Upgrade lighting	\$5 000
Climb Tasmania Inc	Ben Lomond Rockclimbing Guidebook	\$2 000
Cycling South		\$3 000
Deloraine Little Athletics Centre	Upgrade run up and long jump pit	\$3 000
Devon Softball Association Inc		\$2 172
Devonport Cricket Club Inc	Upgrade kitchen	\$4 680
Devonport Gymnastics Club Inc	Sports clinic	\$2 000
Devonport Little Athletics Centre Inc	Hurdles	\$2 000
Devonport Tennis Club Inc (Withdrawn)	Court lighting	\$5 000
Dorset Field and Game Australia Total		\$3 000

Dosa Football Club Inc	Upgrade lighting	\$4 828
Drug Education Network Inc	Good Sports Program	\$5 000
Eastern Districts Pistol Club Inc	Power upgrade	\$2 495
Eastern Shore Croquet Club Inc	Croquet balls	\$650
Edmund Rice Camps Tasmania Inc	Wetsuits	\$1 374
Esk Valley Orienteering Club		\$2 350
Furneaux Pistol Club	Restore pistol range and club facilities	\$5 000
Glenorchy District Football Club Inc	Dishwasher	\$2 000
H Westbrook Memorial Committee Inc	32nd H Westbrook Memorial Launceston to Hobart Cycle Race	\$1 000
Hart Street Tennis and Squash Centre		\$5 000
Hobart Athletic Club	Bikes and Spikes	\$5 000
Hobart Chargers Basketball Club Inc		\$4 000
Hobart Life Saving Club	Rescue dummies	\$385
Hobart Police and Citizens Youth Club Inc	Equipment	\$1 450
Hockey South		\$3 750
Howrah Bowls Club Inc		\$1 200
Huonville Bowls Club Inc	Facilities upgrade	\$5 000
Hutchins School Old Boys Football Club Inc	Construct new net	\$2 950
Kilburn Netball Club Inc		\$1 285
Lake Rosebery Ski Club		\$1 750
Lauderdale Yacht Club	4.5 metre fast rescue vessel	\$2 000
Launceston International Classic Pty Ltd	Launceston International Classic	\$5 000
Launceston Little Athletics Centre		\$3 035
Launceston Ramblers Club Inc	Communication upgrade	\$496
Launceston Touch Association		\$5 000
Lindisfarne Memorial Tennis Club	Tennis ball machine	\$1 035
Lindisfarne Rowing Club Inc	Coach/rescue boat	\$2 000
Lions Club of Kentish Inc	Mountain race	\$1 000
Longford Tennis Club Inc	Purchase tennis tutor plus Model 2 & tennis ball machine	\$1 563
Mersey Rowing Club Inc	Upgrade gymnasium	\$2 103
Mersey Valley Pony Club Inc	Fencing	\$5 000
Metro Claremont Soccer Club Inc	Upgrade lighting	\$5 000
Montrose Bay Yacht Club	Outboard motor	\$1 900
North East Little Athletics Centre Inc		\$2 788
North Launceston Athletic Club	Pole vault poles	\$2 000

North West Athletic Club Inc		\$3 100
North West Tasmanian Bowls Association Inc	Junior Development	\$500
Northern Adult Riding Club Inc	Purchase dressage arena	\$840
Northern Athletic Centre Board Inc	Lighting upgrade	\$5 000
Northern Tasmanian Cricket Umpires Association Inc	Umpire training program	\$2 000
Northern Tasmanian Equestrian Club on behalf of Northern Tasmanian Eventing Club		\$2 800
Northern Tasmanian Table Tennis Association	Balls, bats and nets	\$338
Northern Tasmanian Volleyball Association		\$3 200
Northern Vets Cycling Club Inc	Race finish camera stand and photocopying machine	\$450
Nubeena Sailing Club Inc	Pick up/Safety boat with motor and trailer	\$1 250
Nubeena Tennis Club	Upgrade fence	\$2 500
OHA Football Club Inc	Replace lights	\$5 000
Penguin Bowls Club Inc	Rink Scoreboards	\$1 500
Penguin Clay Target Club Inc	Relocation of club shooting range	\$2 750
Point to Pinnacle Recreational Walk & Run (Inc)	Point to Pinnacle Recreational Walk and Run	\$5 000
Port Dalrymple Yacht Club		\$3 800
Prospectvale Cricket Club Inc	Balls	\$1 000
Queenborough Little Athletics Inc		\$2 008
Queenstown Golf Club Inc	New roofing	\$3 375
Ravenswood Bowls Club	Lawn mower	\$1 275
Redpa Football Club Inc	Facilities upgrade	\$1 990
Riana Cricket Club Inc	Cricket Bowling machine and balls	\$2 000
Rosebery Athletic Club Inc	Athletics carnival	\$3 000
Rosny Park Tennis Club Inc	Replace chain mesh fencing	\$5 000
Ross Community Sports Club Inc	Facility upgrade	\$1 977
Sandy Bay Croquet Club Inc	Sets of bowls	\$975
Sandy Bay Rowing Club Inc	Indoor rowers	\$2 000
Sandy Beach Bowls Club Inc	Upgrade of clubrooms	\$1 440
Slipstream Circus Inc	Gymnastic equipment	\$2 000
Smithton Football Club (Withdrawn)	Smithton Athletics Carnival	\$1 000
Smithton Turf Inc	Bird Scaring facility	\$2 000
Somerset Soccer Club Inc	Install light poles and flood lights	\$4 500

Sorell Bowls Club Inc	Shade canopy	\$500
Southern Tasmanian Netball Association	Construct a wheel chair and pram ramp	\$4 440
Southern Tasmanian Veterans Cycling Club	Promotion, training rides and education	\$700
Southern Touch Inc	Aluminium grandstands	\$5 000
Special Olympics - Tas - Northern Region	Recruitment and training program	\$2 000
Sports Carnivals Association of Tasmania	Tasmanian Christmas Carnival Series	\$20 000
St Helens Bowls Club Inc	Replace fence	\$2 230
St Helens Soccer Club		\$989
St Patricks Old Collegians Football Club	Footballs	\$1 950
St Therese's Catholic Lawn Tennis Club Inc		\$4 162
St Virgils Old Scholars Football Club	Footballs, tackle bags, training markers, gym equipment	\$1 355
Stanley Community Fitness	Steps, pumpbars, power bands	\$1 500
State Equestrian Centre Management Committee	Communicator handsets	\$1 994
Strahan Junior Hockey	Sticks, balls, whistles, hockey bag, goalie equipment	\$765
Strahan Netball Association		\$1 850
Swansea Bowls Club	New roller	\$2 000
Tas Uni White Water Rafting Club		\$1 283
Tasman Exservicemen & Women's Association Inc	Weather shelters	\$1 055
Tasman Swimming Pool Association	Upgrade cement and paving area	\$1 000
Tasmanian Fin Swimming	Australian Fin Swimming Championships July 2003	\$2 000
Tasmanian Veterans Cycling Council Inc	2004 State Veterans Cycling Championships	\$674
Taz Tridentz Fin Swimming Club		\$2 740
Tea Tree Golf Club Inc	Upgrade path	\$5 000
Trevallyn Bowls Club	Facilities upgrade	\$4 812
Trevallyn Tennis Club Inc	Resurface court	\$5 000
Ulverstone District Cricket Club	Upgrade practise wickets	\$5 000
Ulverstone Surf Life Saving Club (Inc)	Malibu boards	\$2 000
Wellington Ranges Orienteering Club		\$2 335
West Coast Council Sport & Recreation Advisory Committee	Active Australia Games	\$1 000
West Tamar Cycling Club Inc	State Senior Individual time trial and Criterium Titles	\$760
West Tamar Pony Club	Grass roller	\$1 650
Westbury Cricket Club Inc	Upgrade cricket wickets	\$5 000
Winnaleah Football Club	Facilities upgrade	\$5 000

Woodbridge Cricket Club Inc	Pads, inners, balls and gloves	\$540
Wynyard Football Club	Skills sessions, footballs, coaching and travel costs	\$1 500
Wynyard Yacht Club		\$1 561
ADDITIONAL		
Northern District Cycling Club	Tasmanian Schoolboys and Schoolgirls Road Cycling Championships	\$500
Beaconsfield Cricket Club	Irrigation system	\$1 200
TOTAL		\$344 983.00

FACILITIES AND OPEN SPACE DEVELOPMENT PROGRAM

Organisation	Project Title	Amount
Burnie Netball Association	Resurfacing of six netball courts at Howe Street, Burnie.	\$18 267
Claremont Golf Club	Effluent water re-use for watering the golf course greens and fairways.	\$100 000
Clarence City Council	Howrah Beach Multi-User Pathway	\$50 283
Clifton Beach Surf Life Saving Club Inc	Upgrade of clubhouse facilities	\$28 638
Cygnets Football Club	Construction of new change-room facility.	\$14 000
Deloraine Bowls Club	Convert existing green to synthetic surface.	\$38 000
Deloraine Football Club	Extension/upgrade of toilets (including disabled/women's toilets)	\$10 000
Devonport Clay Target Club	Construction of clubhouse, amenities and fixed structures	\$16 168
Devonport Golf Club	Install an automated watering system for greens and tees.	\$18 920
Devonport Tennis Club	Construction of 3 flexipave courts	\$26 000
Dorset Council	Lining of the Scottsdale Swimming Pool, disability access, shade for pool complex.	\$30 500
Equestrian Federation of Aust (Tas Branch)	Development of the equestrian cross country course and amenities block at Lauderdale.	\$18 690
Glenorchy RSL Bowls Club	Construction of a 6 rink bowling green.	\$10 000
Huonville Cricket Club	Huonville Recreation Ground irrigation project.	\$11 000
Kentish Council	Grandstand development at the Sheffield Recreation Ground	\$22 500
King Island Netball Association	Repair and resurface two netball courts and associated works at Currie.	\$10 000
Kingston Football Club	Recreation Street Oval development project (Kingston Beach)	\$18 000
Launceston City Council	Lighting for Churchill Park.	\$43 890
Lindisfarne Memorial Tennis Club	Replacement of damaged surfaces of two tennis courts. Replacement of court lighting.	\$23 159
Northern Tasmanian Cricket Association	Upgrade existing main wicket and construct new wicket.	\$17 834
Port Sorell Tennis Club	Provide lighting for three tennis courts.	\$10 395
Rotary Club of Westbury	Skate park/youth recreation area	\$12 000

Sorell Tennis Club Inc	Upgrade of two courts	\$11 000
Southern City BMX Club	Canteen and amenities construction	\$21 666
Southern Tasmania Badminton Association	Court resurfacing, tiered seating and access stairs.	\$14 547
Sunshine Tennis Club Inc	Tennis court upgrade	\$15 908
Tasman Council	Construction of skate park at Nubeena	\$19 333
Tasmanian Trail Association	Maintenance and capital equipment	\$23 000
Tennis Tasmania/Domain Tennis Centre	Upgrade of grass courts to clay courts (8 courts). Includes lighting and associated court equipment.	\$100 000
West Tamar Council	Beaconsfield Skate Park	\$20 000
TOTAL		\$750 697.00

STATE SPORT AND RECREATION DEVELOPMENT PROGRAM

Organisation	Project Title	Amount
AFL Tasmania	AFL Auskick coach, umpire, sports trainer, coordinator development	\$5 000
	AFL Auskick participation	\$5 000
	High School Football Programs	\$3 126
	Umpire Development Programs	\$5 000
	Reclink program	\$5 000
	Sports Trainer Cadetship	\$2 000
	North/NW Dev Coach	\$5 000
	Coach mentoring W/shops	\$2 000
Athletics Tasmania	IGA Team Athletics	\$5 000
	IGA Schools Knock Out	\$5 000
	Indigenous Development	\$5 000
	Oz Squad Talent Dev Program	\$5 000
	Junior Athletics Clinics	\$2 255
	Coaching Dev Program	\$4 055
AUSTSWIM Tasmania Inc	Austswim Courses	\$5 000
Canoe Tasmania	Development program	\$5 000
Hockey Tasmania Inc	Hockey Australia take It On! Program	\$5 000
	Australian Veterans Championships	\$2 000
	SSA U16 Schoolgirls Championships	\$2 000
Lacrosse Tasmania	Junior Recruitment Program	\$600
	Umpiring & Accreditation Program	\$600

	Youth/Senior Recruitment Program	\$500
Master Builders Association	2003 MH Hornibrook National Golf Tournament	\$2 000
Soccer Tasmania Ltd	Northern Region Co-ordinator	\$5 000
	Southern Junior Girls Program	\$4 500
Swimming Tasmania	Junior Development	\$3 000
	Rural Junior Development	\$3 000
	Masters Tournaments Events- Tasmania	\$2 000
	Aust U19 Championship	\$2 000
Tasmanian Basketball Association Ltd	4 Championships- includes Aust Under 20 Men's Basketball Champs; Australian Under 20 Women's Basketball Championship; Aust Basketball Championship for Women with an Intellectual Disability	\$5 000
Tasmanian Bowls Council Inc on behalf of Tasmanian Bowls Council Inc and Tasmanian Women's Bowling Association Inc	Get on the Green program	\$4 000
	Unification of Admin of Bowls	\$4 000
Tasmanian Cricket Association	Women's Cricket Development	\$5 000
	Cric Hit	\$5 000
	Country Areas Development Program	\$5 000
	Cricket Scorers Training Manual	\$4 000
	National Under 19 Girls Championship	\$2 000
Tasmanian Croquet Association Inc	Referee Training	\$500
Tasmanian Cycling Federation Inc	Full Cycle	\$5 000
	Australian Junior Track Cycling Championships	\$2 000
Tasmanian Diving Association Inc	TDA Judges Course	\$2 366
	TDA Coaches Course	\$2 412
Tasmanian Golf Council Inc	Go-Go Golf Program	\$5 000
	Junior Program	\$5 000
Tasmanian Gymnastics Association Inc	Club 10 Quality Improvement Accreditation	\$5 000
	Gymsport Coaches Development Project	\$5 000
	Gymsport Judges Development Project	\$4 200
Tasmanian Netball Association Inc	Leadership Programme	\$4 000
	Player Development Programmes	\$5 000
	17s and 19s Championships	\$2 000
Tasmanian Rowing Council Inc	Tas Rowing CI Dev Program	\$5 000
Tasmanian Rugby League Inc	Establishment if Inter-Primary Schools Comp and Clinics (continuation)	\$5 000

Tasmanian Rugby Union Inc	Try Rugby (Not taken up)	\$5 000
Tasmanian Touch Association	Statewide Touch Infrastructure Develop	\$5 000
Tasmanian Waterpolo Inc	National Junior Waterpolo Championship	\$2 000
Tasmanian Yachting Association	Targeted Sports Participation Growth Program	\$5 000
	Australian Women's Match Racing 2003	\$1 818
	Australian National Sharpie	\$1 818
Tennis Tasmania	Tennis in Schools	\$5 000
	Milo Tennis Over Australia	\$5 000
Triathlon Tasmania	Event Management & Administration	\$5 000
	Junior Development	\$5 000
Women's Golf Tasmania Inc	Go 4 Golf	\$5 000
	Australian Ladies' Amateur Championship 2004	\$2 000
Womensport Tasmania Inc	Development Officer	\$5 000
AFL Tasmania	AFL Auskick coach, umpire, sports trainer, coordinator development	\$5 000
	AFL Auskick participation	\$5 000
	High School Football Programs	\$3 126
	Umpire Development Programs	\$5 000
	Realink program	\$5 000
	Sports Trainer Cadetship	\$2 000
	North/NW Dev Coach	\$5 000
TOTAL		\$244 750.00

NEW APPRENTICE SUBSIDY SCHEME

Organisation	Project Title	Amount
AFL Tasmania	4 new apprentices	\$17 000
Brighton Council	1 new apprentice (Not taken up)	\$0
Northern Group Training	3 new apprentices	\$12 750
Swimming Tasmania	1 new apprentice	\$4 250
Tasmanian Cricket Association	1 new apprentice	\$4 250
Tasmanian Golf Council Inc	1 new apprentice	\$4 250
Tasmanian Sports Federation Inc	3 new apprentices	\$12 750
TOTAL		\$55 250.00

